

## DESCRIPTION

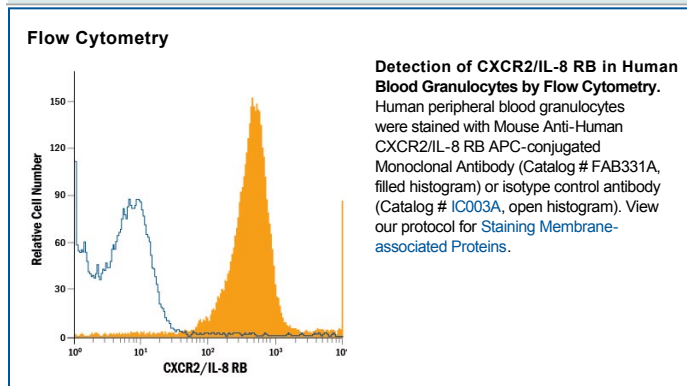
<b>Species Reactivity</b>	Human
<b>Specificity</b>	Detects human CXCR2/IL-8 RB transfected NS0 cells but not the parental cell line. It does not cross-react with CXCR1/IL-8 RA.
<b>Source</b>	Monoclonal Mouse IgG <sub>2A</sub> Clone # 48311
<b>Purification</b>	Protein A or G purified from ascites
<b>Immunogen</b>	NS0 mouse myeloma cell line transfected with human CXCR2/IL-8 RB Met1-Leu355 Accession # AAB25880
<b>Conjugate</b>	Allophycocyanin Excitation Wavelength: 620-650 nm Emission Wavelength: 660-670 nm
<b>Formulation</b>	Supplied in a saline solution containing BSA and Sodium Azide. See Certificate of Analysis for details.  *Contains <0.1% Sodium Azide, which is not hazardous at this concentration according to GHS classifications. Refer to the Safety Data Sheet (SDS) for additional information and handling instructions.

## APPLICATIONS

**Please Note:** Optimal dilutions should be determined by each laboratory for each application. *General Protocols* are available in the *Technical Information* section on our website.

	Recommended Concentration	Sample
<b>Flow Cytometry</b>	10 µL/10 <sup>6</sup> cells	See Below

## DATA



## PREPARATION AND STORAGE

<b>Shipping</b>	The product is shipped with polar packs. Upon receipt, store it immediately at the temperature recommended below.
<b>Stability &amp; Storage</b>	<b>Protect from light. Do not freeze.</b> <ul style="list-style-type: none"> <li>12 months from date of receipt, 2 to 8 °C as supplied.</li> </ul>

## BACKGROUND

CXCR2, also known as IL-8 RB, is a G protein-coupled chemokine receptor expressed on neutrophils. It binds IL-8, GRO $\alpha$ , GRO $\beta$ , GRO $\gamma$ , NAP-2, and ENA-78.