

## DESCRIPTION

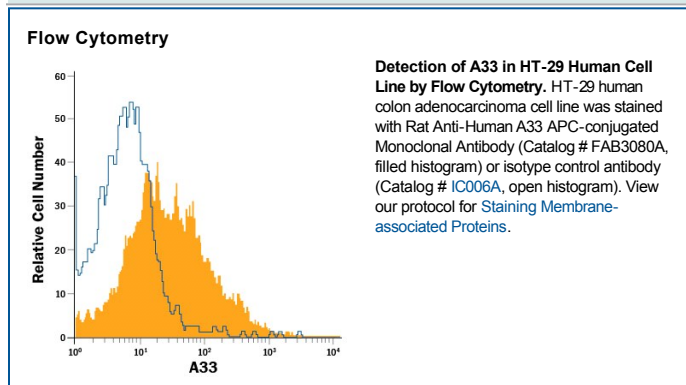
<b>Species Reactivity</b>	Human
<b>Specificity</b>	Detects human A33 in direct ELISAs and Western blots. In direct ELISAs and Western blots, no cross-reactivity with recombinant mouse A33 is observed.
<b>Source</b>	Monoclonal Rat IgG <sub>2A</sub> Clone # 402104
<b>Purification</b>	Protein A or G purified from hybridoma culture supernatant
<b>Immunogen</b>	Mouse myeloma cell line NS0-derived recombinant human A33 Ile22-Val235 Accession # Q99795
<b>Conjugate</b>	Allophycocyanin Excitation Wavelength: 620-650 nm Emission Wavelength: 660-670 nm
<b>Formulation</b>	Supplied in a saline solution containing BSA and Sodium Azide. See Certificate of Analysis for details.  *Contains <0.1% Sodium Azide, which is not hazardous at this concentration according to GHS classifications. Refer to the Safety Data Sheet (SDS) for additional information and handling instructions.

## APPLICATIONS

**Please Note:** Optimal dilutions should be determined by each laboratory for each application. *General Protocols* are available in the *Technical Information* section on our website.

	<b>Recommended Concentration</b>	<b>Sample</b>
<b>Flow Cytometry</b>	10 $\mu$ L/10 <sup>6</sup> cells	See Below

## DATA



## PREPARATION AND STORAGE

<b>Shipping</b>	The product is shipped with polar packs. Upon receipt, store it immediately at the temperature recommended below.
<b>Stability &amp; Storage</b>	<b>Protect from light. Do not freeze.</b> <ul style="list-style-type: none"> <li>● 12 months from date of receipt, 2 to 8 °C as supplied.</li> </ul>

## BACKGROUND

Human A33, also known as GPA33, is a 43 kDa type I transmembrane glycoprotein that belongs to the CTX (cortical thymocyte marker in *Xenopus*) family of cell adhesion molecules within the immunoglobulin superfamily. Other family members include CXADR, ESAM, BT-IgSF, CD2 and JAM-A-C. The extracellular domain (ECD) of human A33 is 214 amino acids (aa) in length and contains one V-type and one C2-type Ig-like domain. This ECD is 80%, 74% and 71% aa identical to canine, bovine and mouse A33 ECD, respectively. A33 is likely to be involved in cell-cell adhesion between epithelial cells.