

## DESCRIPTION

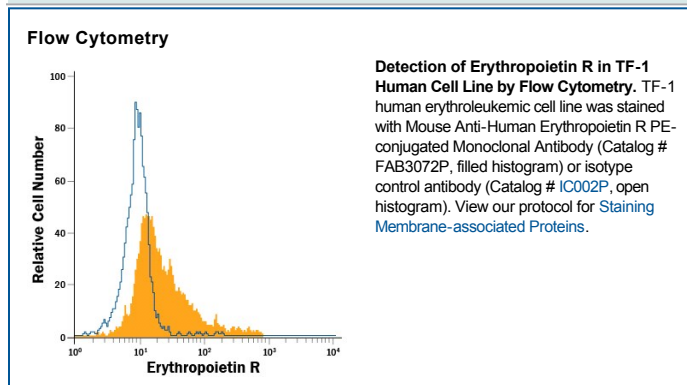
<b>Species Reactivity</b>	Human
<b>Specificity</b>	Detects human Epo R in ELISAs. In ELISAs, no cross-reactivity or interference was observed with recombinant human (rh) Epo, rhTpo R, or rmEpo R.
<b>Source</b>	Monoclonal Mouse IgG <sub>1</sub> Clone # 38421
<b>Purification</b>	Protein A or G purified from hybridoma culture supernatant
<b>Immunogen</b>	Mouse myeloma cell line NS0-derived recombinant human Erythropoietin R Ala25-Pro250 Accession # P19235
<b>Conjugate</b>	Phycoerythrin Excitation Wavelength: 488 nm Emission Wavelength: 565-605 nm
<b>Formulation</b>	Supplied in a saline solution containing BSA and Sodium Azide. See Certificate of Analysis for details.  *Contains <0.1% Sodium Azide, which is not hazardous at this concentration according to GHS classifications. Refer to the Safety Data Sheet (SDS) for additional information and handling instructions.

## APPLICATIONS

**Please Note:** Optimal dilutions should be determined by each laboratory for each application. *General Protocols* are available in the *Technical Information* section on our website.

	<b>Recommended Concentration</b>	<b>Sample</b>
<b>Flow Cytometry</b>	10 $\mu$ L/10 <sup>6</sup> cells	See Below

## DATA



## PREPARATION AND STORAGE

**Shipping** The product is shipped with polar packs. Upon receipt, store it immediately at the temperature recommended below.

**Stability & Storage** **Protect from light. Do not freeze.**

- 12 months from date of receipt, 2 to 8 °C as supplied.

## BACKGROUND

Epo R is a transmembrane protein expressed on the surface of megakaryocytes, erythroid progenitors, and endothelial cells. It binds Epo and transmits signals that stimulate the proliferation and maturation of bone marrow erythroid precursors into red cells.