

DESCRIPTION

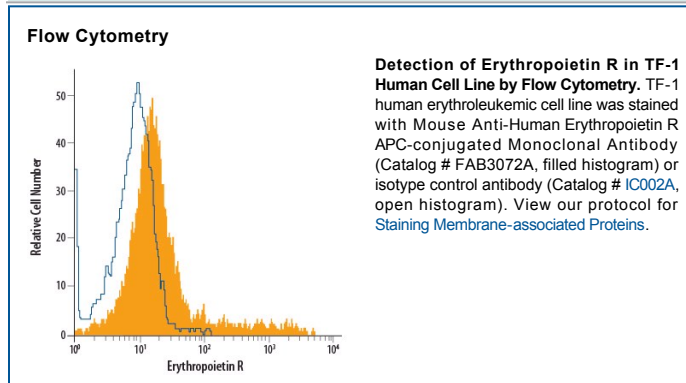
Species Reactivity	Human
Specificity	Detects human Epo R in ELISAs. In ELISAs, no cross-reactivity or interference was observed with recombinant human (rh) Epo, rhTpo R, or rmEpo R.
Source	Monoclonal Mouse IgG ₁ Clone # 38421
Purification	Protein A or G purified from hybridoma culture supernatant
Immunogen	Mouse myeloma cell line NS0-derived recombinant human Erythropoietin R Ala25-Pro250 Accession # P19235
Conjugate	Allophycocyanin Excitation Wavelength: 620-650 nm Emission Wavelength: 660-670 nm
Formulation	Supplied in a saline solution containing BSA and Sodium Azide. See Certificate of Analysis for details. *Contains <0.1% Sodium Azide, which is not hazardous at this concentration according to GHS classifications. Refer to the Safety Data Sheet (SDS) for additional information and handling instructions.

APPLICATIONS

Please Note: Optimal dilutions should be determined by each laboratory for each application. *General Protocols* are available in the *Technical Information* section on our website.

	Recommended Concentration	Sample
Flow Cytometry	10 μ L/10 ⁶ cells	See Below

DATA



PREPARATION AND STORAGE

Shipping	The product is shipped with polar packs. Upon receipt, store it immediately at the temperature recommended below.
Stability & Storage	Protect from light. Do not freeze. <ul style="list-style-type: none"> ● 12 months from date of receipt, 2 to 8 °C as supplied.

BACKGROUND

Epo R is a transmembrane protein expressed on the surface of megakaryocytes, erythroid progenitors, and endothelial cells. It binds Epo and transmits signals that stimulate the proliferation and maturation of bone marrow erythroid precursors into red cells.