

Reagents Provided

Alexa Fluor[®] 700-conjugated mouse monoclonal anti-human EphA2:
Supplied as 10 µg of antibody in 0.5 mL saline containing up to 0.5% BSA and 0.09% sodium azide.

Clone #: 371805

Isotype: mouse IgG_{2A}

Reagents Not Provided

- Flow Cytometry Staining Buffer (Catalog # FC001) or other BSA-supplemented saline buffer.

Storage

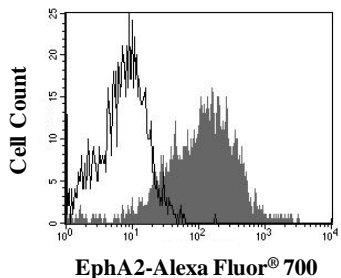
Reagents are stable for **twelve months** from the date of receipt when stored in the dark at 2-8 °C.

Intended Use

Designed to quantitatively determine the percentage of cells bearing EphA2 within a population and qualitatively determine the density of EphA2 on cell surfaces by flow cytometry.

Product Description

This antibody was produced from a hybridoma resulting from the fusion of a mouse myeloma with B cells obtained from a mouse immunized with purified NS0-derived recombinant human Eph Receptor A2 (rhEphA2; aa 25-534; Accession # NP_004422). The IgG fraction of the tissue culture supernatant was purified by Protein G affinity chromatography. The purified antibody was then conjugated to Alexa Fluor[®] 700 fluorochrome. Cell surface expression of EphA2 is determined by flow cytometry using 675-700 nm wavelength excitation range and monitoring emitted fluorescence with a detector optimized to collect peak emissions at around 723 nm.



Human A431 cells were stained with Alexa Fluor[®] 700-conjugated anti-human EphA2 (Catalog # FAB3035N; filled histogram) or Alexa Fluor[®] 700-conjugated isotype control (Catalog # IC003N; open histogram).

Background Information

EphA2 (also known as Eck) is a 130 kDa type I transmembrane glycoprotein that belongs to the ephrin receptor subfamily of the protein TKR family. Human EphA2 is 952 amino acids (aa) in length and contains a 510 aa extracellular domain (ECD) and a 418 aa cytoplasmic region. The ECD contains one Cys-rich region (aa 188-325) and two fibronectin type III domains (aa 329-526). EphA2 is expressed on epithelium (keratinocytes, renal collecting duct cells, multiple carcinomas) and dendritic/Langerhans cells. It binds to numerous GPI-linked A-class ephrins and likely regulates cell trafficking and localization. The ECD of human EphA2 shares 90%, 93%, and 92% aa sequence identity with the ECD in mouse, canine, and bovine, respectively.

Flow Cytometry Validation

This antibody has been tested for flow cytometry using human A431 cells.

- Cells may be Fc-blocked with 1 µg of human IgG/10⁵ cells for 15 minutes at room temperature. Do not wash excess blocking IgG from this reaction.
- After blocking, 5 µL of conjugated antibody was added to up to 1 x 10⁶ cells and incubated for 30 minutes at room temperature.
- Unbound antibody was removed by washing the cells twice in Flow Cytometry Staining Buffer (Catalog # FC001). Note that whole blood requires a RBC lysis step at this point using Flow Cytometry Human Lyse Buffer (Catalog # FC002).
- The cells were resuspended in Flow Cytometry Staining Buffer for final flow cytometric analysis. As a control for this analysis, cells in a separate tube should be treated with Alexa Fluor[®] 700-labeled mouse IgG_{2A} antibody. This procedure may need to be modified, depending upon the cell type and final utilization. Individual users may need to titrate to determine the optimal reagent amount for their specific use.

Warning: Contains sodium azide as a preservative. Sodium azide may react with lead and copper plumbing to form explosive metal azides. Flush with large volumes of water during disposal.

Legal

This product is provided under an agreement between Life Technologies Corporation and R&D Systems, Inc., and the manufacture, use, sale or import of this product is subject to one or more US patents and corresponding non-US equivalents, owned by Life Technologies Corporation and its affiliates. The purchase of this product conveys to the buyer the non-transferable right to use the purchased amount of the product and components of the product only in research conducted by the buyer (whether the buyer is an academic or for-profit entity). The sale of this product is expressly conditioned on the buyer not using the product or its components (1) in manufacturing; (2) to provide a service, information, or data to an unaffiliated third party for payment; (3) for therapeutic, diagnostic or prophylactic purposes; (4) to resell, sell, or otherwise transfer this product or its components to any third party, or for any other commercial purpose. Life Technologies Corporation will not assert a claim against the buyer of the infringement of the above patents based on the manufacture, use or sale of a commercial product developed in research by the buyer in which this product or its components was employed, provided that neither this product nor any of its components was used in the manufacture of such product. For information on purchasing a license to this product for purposes other than research, contact Life Technologies Corporation, Cell Analysis Business Unit, Business Development, 29851 Willow Creek Road, Eugene, OR 97402, Tel: (541) 465-8300. Fax: (541) 335-0354.