

## DESCRIPTION

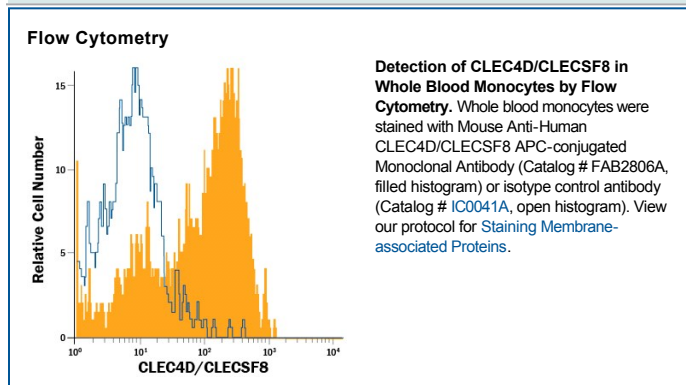
<b>Species Reactivity</b>	Human
<b>Specificity</b>	Detects human CLEC4D/CLECSF8 in direct ELISAs and Western blots. In direct ELISAs and Western blots, no cross-reactivity with recombinant human (rh) CLECSF9, rhCLECSF13, rhOCIL, or rhOCILrp2 is observed.
<b>Source</b>	Monoclonal Mouse IgG <sub>2B</sub> Clone # 413512
<b>Purification</b>	Protein A or G purified from hybridoma culture supernatant
<b>Immunogen</b>	Mouse myeloma cell line NS0-derived recombinant human CLEC4D/CLECSF8 Gly52-Asn215 Accession # Q8WXI8
<b>Conjugate</b>	Allophycocyanin Excitation Wavelength: 620-650 nm Emission Wavelength: 660-670 nm
<b>Formulation</b>	Supplied in a saline solution containing BSA and Sodium Azide. See Certificate of Analysis for details.  *Contains <0.1% Sodium Azide, which is not hazardous at this concentration according to GHS classifications. Refer to the Safety Data Sheet (SDS) for additional information and handling instructions.

## APPLICATIONS

**Please Note:** Optimal dilutions should be determined by each laboratory for each application. *General Protocols* are available in the *Technical Information* section on our website.

	<b>Recommended Concentration</b>	<b>Sample</b>
<b>Flow Cytometry</b>	10 $\mu$ L/10 <sup>6</sup> cells	See Below

## DATA



## PREPARATION AND STORAGE

<b>Shipping</b>	The product is shipped with polar packs. Upon receipt, store it immediately at the temperature recommended below.
<b>Stability &amp; Storage</b>	<b>Protect from light. Do not freeze.</b> <ul style="list-style-type: none"> <li>● 12 months from date of receipt, 2 to 8 °C as supplied.</li> </ul>

## BACKGROUND

CLEC4D (C-type lectin domain family 4 member D), also known as CLCSF8, CLEC-6, and MCL, is a 30 kDa type II transmembrane (TM) glycoprotein that belongs to the CLR (C-type Lectin Receptor) family of molecules. It is synthesized as a 215 amino acid (aa) protein that contains a 17 aa N-terminal cytoplasmic domain, a 21 aa TM segment, and a 177 aa C-terminal extracellular region. The extracellular region shows a short stalk and a 118 aa CRD (carbohydrate recognition domain). The nature of its carbohydrate ligand is unknown. CLEC4D is restricted to monocytes/macrophages and serves as an endocytic receptor. Homodimers and homotrimers form on the cell surface. The human CLEC4D extracellular region shares 63% aa sequence identity with the mouse extracellular region.