

### DESCRIPTION

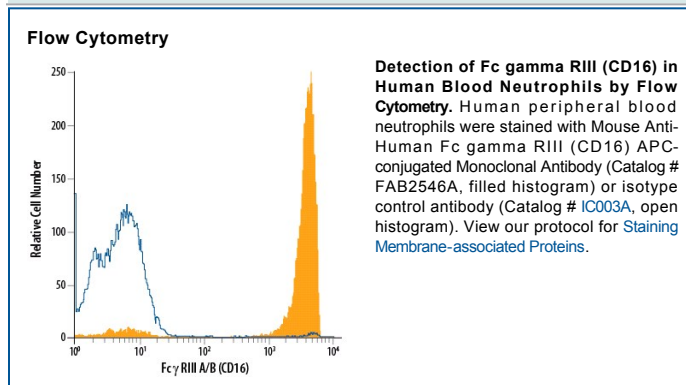
<b>Species Reactivity</b>	Human
<b>Specificity</b>	Detects human Fcγ RIIIA/B (CD16) in direct ELISAs. In direct ELISAs, approximately 10% cross-reactivity with recombinant human Fcγ RIIA and recombinant mouse Fcγ RIII is observed.
<b>Source</b>	Monoclonal Mouse IgG <sub>2A</sub> Clone # 245536
<b>Purification</b>	Protein A or G purified from hybridoma culture supernatant
<b>Immunogen</b>	Mouse myeloma cell line NS0-derived recombinant human Fcγ RIIIA/B (CD16) Thr20-Gln208 Accession # O75015
<b>Conjugate</b>	Allophycocyanin Excitation Wavelength: 620-650 nm Emission Wavelength: 660-670 nm
<b>Formulation</b>	Supplied in a saline solution containing BSA and Sodium Azide. See Certificate of Analysis for details.  *Contains <0.1% Sodium Azide, which is not hazardous at this concentration according to GHS classifications. Refer to the Safety Data Sheet (SDS) for additional information and handling instructions.

### APPLICATIONS

**Please Note:** Optimal dilutions should be determined by each laboratory for each application. *General Protocols* are available in the *Technical Information* section on our website.

	<b>Recommended Concentration</b>	<b>Sample</b>
<b>Flow Cytometry</b>	10 μL/10 <sup>6</sup> cells	See Below

### DATA



### PREPARATION AND STORAGE

**Shipping** The product is shipped with polar packs. Upon receipt, store it immediately at the temperature recommended below.

**Stability & Storage** **Protect from light. Do not freeze.**

- 12 months from date of receipt, 2 to 8 °C as supplied.

### BACKGROUND

Fcγ RIIIA and B are low affinity receptors for polyvalent immune-complexed IgG. Fcγ RIIIA is a transmembrane activating receptor expressed by NK cells, T cells, monocytes, and macrophages. Fcγ RIIIB is a non-activating GPI-linked decoy receptor expressed on neutrophils and eosinophils.