

DESCRIPTION

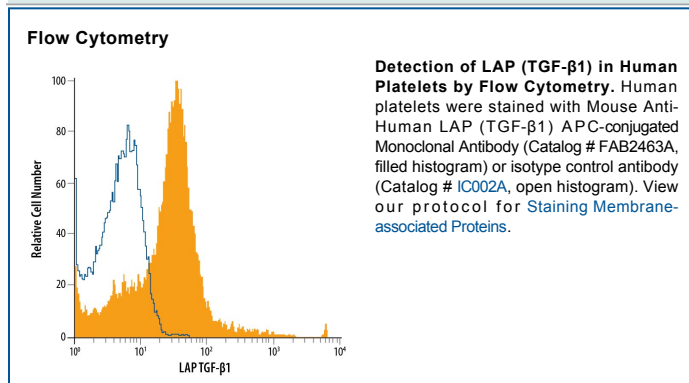
Species Reactivity	Human
Specificity	Detects human LAP (TGF-β1) in direct ELISAs. In direct ELISAs, this antibody does not cross-react with recombinant human (rh) TGF-β1, rhTGF-β2, rhTGF-β1.2, rhTGF-β3, or rhTGF-α.
Source	Monoclonal Mouse IgG ₁ Clone # 27232
Purification	Protein A or G purified from hybridoma culture supernatant
Immunogen	<i>S. frugiperda</i> insect ovarian cell line Sf 21-derived recombinant human LAP (TGF-β1) Leu30-Arg278 (Cys33Ser) Accession # P01137
Conjugate	Allophycocyanin Excitation Wavelength: 620-650 nm Emission Wavelength: 660-670 nm
Formulation	Supplied in a saline solution containing BSA and Sodium Azide. See Certificate of Analysis for details. *Contains <0.1% Sodium Azide, which is not hazardous at this concentration according to GHS classifications. Refer to the Safety Data Sheet (SDS) for additional information and handling instructions.

APPLICATIONS

Please Note: Optimal dilutions should be determined by each laboratory for each application. *General Protocols* are available in the *Technical Information* section on our website.

	Recommended Concentration	Sample
Flow Cytometry	10 μL/10 ⁶ cells	See Below

DATA



PREPARATION AND STORAGE

Shipping The product is shipped with polar packs. Upon receipt, store it immediately at the temperature recommended below.

Stability & Storage **Protect from light. Do not freeze.**

- 12 months from date of receipt, 2 to 8 °C as supplied.

BACKGROUND

The TGF-β family includes several related proteins (70–80% sequence homology) from mammalian, avian, or *Xenopus* systems that are now designated TGF-β1, TGF-β2, TGF-β1.2, TGF-β3, TGF-β4, and TGF-β5. These proteins are secreted by cells in the form of an inactive complex, referred to as latent TGF-β, that consists of TGF-β associated non-covalently with a Latency-associated peptide (LAP). These two proteins are synthesized as a single pro-peptide that is cleaved in a post Golgi compartment prior to secretion. Different TGF-β family members are naturally associated with their own distinct LAPs.