

DESCRIPTION

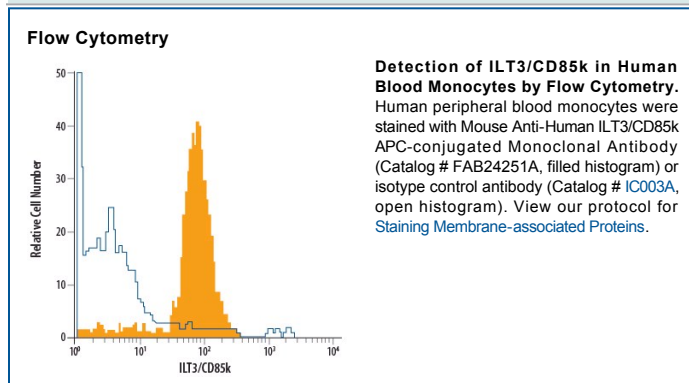
Species Reactivity	Human
Specificity	Detects human ILT3/CD85k in direct ELISAs and Western blots. In direct ELISAs, approximately 50% cross-reactivity with with recombinant human (rh) ILT5 is observed. No cross-reactivity with rhILT1, rhILT2, rhILT4, rhILT7, rhILT11, rhLIR-6 or rhLIR-8 is observed.
Source	Monoclonal Mouse IgG _{2A} Clone # 293623
Purification	Protein A or G purified from hybridoma culture supernatant
Immunogen	Mouse myeloma cell line NS0-derived recombinant human ILT3/CD85k Pro17-His257 Accession # ABM86208
Conjugate	Allophycocyanin Excitation Wavelength: 620-650 nm Emission Wavelength: 660-670 nm
Formulation	Supplied in a saline solution containing BSA and Sodium Azide. See Certificate of Analysis for details. *Contains <0.1% Sodium Azide, which is not hazardous at this concentration according to GHS classifications. Refer to the Safety Data Sheet (SDS) for additional information and handling instructions.

APPLICATIONS

Please Note: Optimal dilutions should be determined by each laboratory for each application. *General Protocols* are available in the *Technical Information* section on our website.

	Recommended Concentration	Sample
Flow Cytometry	10 μ L/10 ⁶ cells	See Below

DATA



PREPARATION AND STORAGE

Shipping	The product is shipped with polar packs. Upon receipt, store it immediately at the temperature recommended below.
Stability & Storage	Protect from light. Do not freeze. <ul style="list-style-type: none"> ● 12 months from date of receipt, 2 to 8 °C as supplied.

BACKGROUND

Immunoglobulin-Like Transcript 3 (ILT3), also known as Leukocyte Immunoglobulin-Like Receptor subfamily B member 4 (LILRB4) and Leukocyte Immunoglobulin-like Receptor 5 (LIR-5), is a type I membrane protein that functions as a receptor for class I MHC antigens. It contains cytoplasmic ITIM motifs and is involved in the down-regulation of immune responses.