

DESCRIPTION

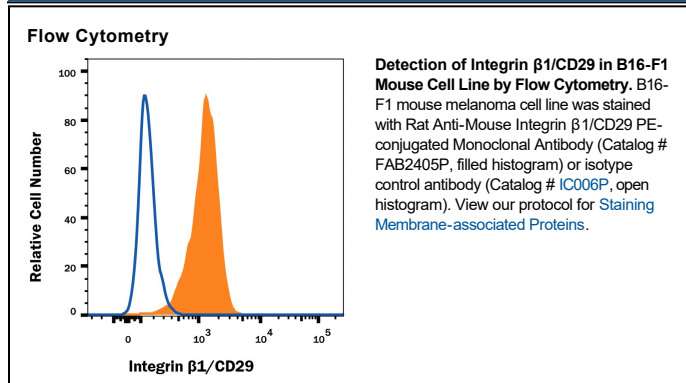
Species Reactivity	Mouse
Specificity	Detects mouse Integrin β 1/CD29 in direct ELISAs and Western blots. In Western blots, no cross-reactivity with recombinant human Integrin β 1, recombinant mouse (rm) Integrin β 2, rmlIntegrin β 3, rmlIntegrin β 4, or rmlIntegrin β 6 is observed.
Source	Monoclonal Rat IgG _{2A} Clone # 265917
Purification	Protein A or G purified from hybridoma culture supernatant
Immunogen	Chinese hamster ovary cell line CHO-derived recombinant mouse Integrin β 1/CD29 Gln21-Asp728 Accession # P09055
Conjugate	Phycoerythrin Excitation Wavelength: 488 nm Emission Wavelength: 565-605 nm
Formulation	Supplied in a saline solution containing BSA and Sodium Azide. See Certificate of Analysis for details. *Contains <0.1% Sodium Azide, which is not hazardous at this concentration according to GHS classifications. Refer to the Safety Data Sheet (SDS) for additional information and handling instructions.

APPLICATIONS

Please Note: Optimal dilutions should be determined by each laboratory for each application. *General Protocols* are available in the *Technical Information* section on our website.

	Recommended Concentration	Sample
Flow Cytometry	10 μ L/10 ⁶ cells	See Below

DATA



PREPARATION AND STORAGE

Shipping The product is shipped with polar packs. Upon receipt, store it immediately at the temperature recommended below.

Stability & Storage **Protect from light. Do not freeze.**

- 12 months from date of receipt, 2 to 8 °C as supplied.

BACKGROUND

The Integrin β 1 subunit, also known as CD29, associates with multiple distinct Integrin α subunits. The Integrin β 1 subunit has a broad tissue distribution with the exception of erythrocytes.