

## DESCRIPTION

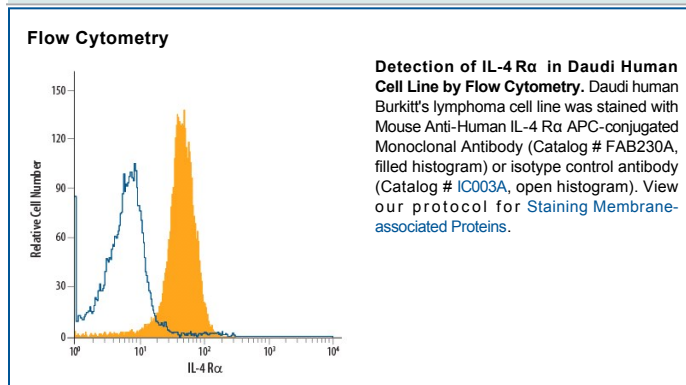
<b>Species Reactivity</b>	Human
<b>Specificity</b>	Detects human IL-4 R $\alpha$ in direct ELISAs and Western blots. In direct ELISAs, no cross-reactivity with recombinant human (rh) IL-9 R, recombinant mouse IL-4 R, rhIL-5 R $\alpha$ , rhIL-5 R $\beta$ , rhIL-13 R $\alpha$ 1, or rhIL-13 R $\alpha$ 2 is observed.
<b>Source</b>	Monoclonal Mouse IgG <sub>2A</sub> Clone # 25463
<b>Purification</b>	Protein A or G purified from ascites
<b>Immunogen</b>	<i>S. frugiperda</i> insect ovarian cell line Sf 21-derived recombinant human IL-4 R Gly24-His232 Accession # P24394
<b>Conjugate</b>	Allophycocyanin Excitation Wavelength: 620-650 nm Emission Wavelength: 660-670 nm
<b>Formulation</b>	Supplied in a saline solution containing BSA and Sodium Azide. See Certificate of Analysis for details.  *Contains <0.1% Sodium Azide, which is not hazardous at this concentration according to GHS classifications. Refer to the Safety Data Sheet (SDS) for additional information and handling instructions.

## APPLICATIONS

**Please Note:** Optimal dilutions should be determined by each laboratory for each application. *General Protocols* are available in the *Technical Information* section on our website.

	Recommended Concentration	Sample
<b>Flow Cytometry</b>	10 $\mu$ L/10 <sup>6</sup> cells	See Below

## DATA



## PREPARATION AND STORAGE

**Shipping** The product is shipped with polar packs. Upon receipt, store it immediately at the temperature recommended below.

**Stability & Storage** **Protect from light. Do not freeze.**

- 12 months from date of receipt, 2 to 8 °C as supplied.

## BACKGROUND

Interleukin 4 receptor (IL-4 R) is the transmembrane ligand binding subunit of the heterodimeric IL-4 receptor complex. In the type I receptor complex, IL-4 R associates with the common  $\gamma$  chain, whereas in the type II receptor complex, it associates with IL-13 R $\alpha$ 1. IL-4 R is expressed by B cells, T cells, monocytes and macrophages.