

DESCRIPTION

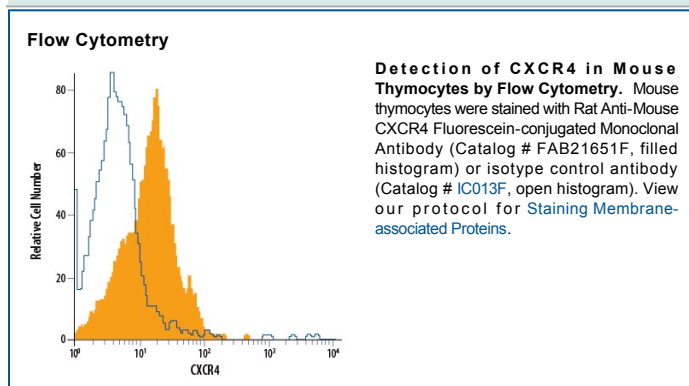
Species Reactivity	Mouse
Specificity	Detects mouse CXCR4 transfectants. Does not stain irrelevant transfectants.
Source	Monoclonal Rat IgG _{2B} Clone # 247506
Purification	Protein A or G purified from hybridoma culture supernatant
Immunogen	Y3 rat myeloid cell line transfected with mouse CXCR4 Met1-Ser359 Accession # P70658
Conjugate	Fluorescein Excitation Wavelength: 488 nm Emission Wavelength: 515-545 nm
Formulation	Supplied in a saline solution containing BSA and Sodium Azide. See Certificate of Analysis for details. *Contains <0.1% Sodium Azide, which is not hazardous at this concentration according to GHS classifications. Refer to the Safety Data Sheet (SDS) for additional information and handling instructions.

APPLICATIONS

Please Note: Optimal dilutions should be determined by each laboratory for each application. *General Protocols* are available in the *Technical Information* section on our website.

	Recommended Concentration	Sample
Flow Cytometry	10 μ L/10 ⁶ cells	See Below

DATA



PREPARATION AND STORAGE

Shipping	The product is shipped with polar packs. Upon receipt, store it immediately at the temperature recommended below.
Stability & Storage	Protect from light. Do not freeze. <ul style="list-style-type: none"> 12 months from date of receipt, 2 to 8 °C as supplied.

BACKGROUND

CXCR4 is a G-protein-linked seven transmembrane spanning receptor that binds stromal cell-derived factor-1 (SDF-1). CXCR4 acts as a co-factor for T-cell tropic HIV-1 and-2 viral entry into cells.