

DESCRIPTION

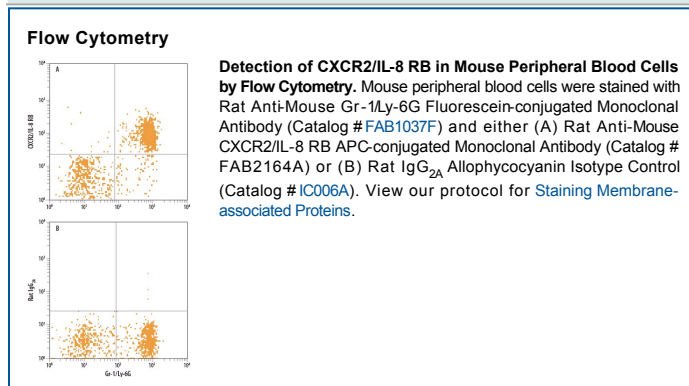
| | |
|---------------------------|--|
| Species Reactivity | Mouse |
| Specificity | Stains mouse CXCR2-transfected cells but not irrelevant transfectants. |
| Source | Monoclonal Rat IgG _{2A} Clone # 242216 |
| Purification | Protein A or G purified from hybridoma culture supernatant |
| Immunogen | C6 rat glioma cell line transfected with mouse CXCR2 Met1-Leu359 Accession # P35343 |
| Conjugate | Allophycocyanin Excitation Wavelength: 620-650 nm Emission Wavelength: 660-670 nm |
| Formulation | Supplied in a saline solution containing BSA and Sodium Azide. See Certificate of Analysis for details. *Contains <0.1% Sodium Azide, which is not hazardous at this concentration according to GHS classifications. Refer to the Safety Data Sheet (SDS) for additional information and handling instructions. |

APPLICATIONS

Please Note: Optimal dilutions should be determined by each laboratory for each application. *General Protocols* are available in the *Technical Information* section on our website.

| | Recommended Concentration | Sample |
|-----------------------|-----------------------------|-----------|
| Flow Cytometry | 10 µL/10 ⁶ cells | See Below |

DATA



PREPARATION AND STORAGE

| | |
|--------------------------------|--|
| Shipping | The product is shipped with polar packs. Upon receipt, store it immediately at the temperature recommended below. |
| Stability & Storage | Protect from light. Do not freeze. <ul style="list-style-type: none"> 12 months from date of receipt, 2 to 8 °C as supplied. |

BACKGROUND

CXCR2, also known as IL-8 RB, is a G protein-coupled chemokine receptor expressed on neutrophils. It binds IL-8, GRO α , GRO β , GRO γ , NAP-2, and ENA-78.