

DESCRIPTION

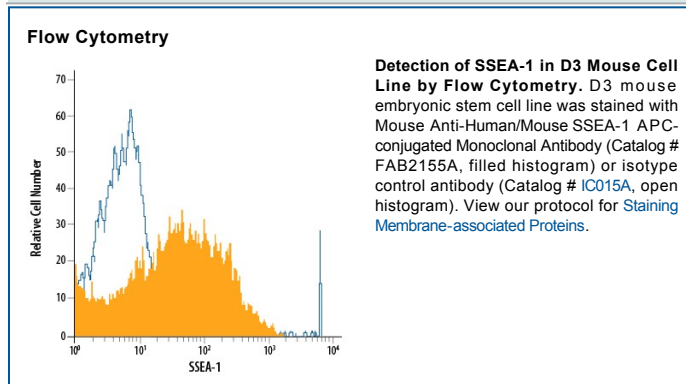
Species Reactivity	Human/Mouse
Specificity	Detects human and mouse SSEA-1.
Source	Monoclonal Mouse IgM Clone # MC-480
Purification	IgM-specific Affinity-purified from hybridoma culture supernatant
Immunogen	F9 mouse teratocarcinoma stem cells
Conjugate	Allophycocyanin Excitation Wavelength: 620-650 nm Emission Wavelength: 660-670 nm
Formulation	Supplied in a saline solution containing BSA and Sodium Azide. See Certificate of Analysis for details. *Contains <0.1% Sodium Azide, which is not hazardous at this concentration according to GHS classifications. Refer to the Safety Data Sheet (SDS) for additional information and handling instructions.

APPLICATIONS

Please Note: Optimal dilutions should be determined by each laboratory for each application. *General Protocols* are available in the *Technical Information* section on our website.

	Recommended Concentration	Sample
Flow Cytometry	10 μ L/10 ⁶ cells	See Below

DATA



PREPARATION AND STORAGE

Shipping	The product is shipped with polar packs. Upon receipt, store it immediately at the temperature recommended below.
Stability & Storage	Protect from light. Do not freeze. <ul style="list-style-type: none"> ● 12 months from date of receipt, 2 to 8 °C as supplied.

BACKGROUND

Stage-Specific Embryonic Antigen-1 (SSEA-1), an antigenic epitope defined as a Lewis x carbohydrate structure, is expressed during early mouse embryogenesis on murine embryonal carcinoma cells (EC), murine embryonic stem cells (ES), and murine and human germ cells. Expression of SSEA-1 is down-regulated following differentiation of murine EC and ES cells. In contrast, the differentiation of human EC and ES cells is accompanied by an increase in SSEA-1 expression (1, 2).

References:

1. Solter, D. and Knowles, B.B. (1978) Proc. Natl. Acad. Sci. USA **75**:5565.
2. Fox, N. *et al.* (1983) Cancer Res. **43**:669.