

## DESCRIPTION

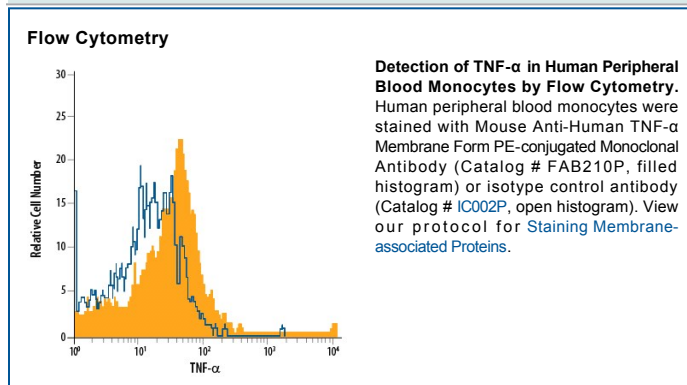
|                           |   |
|---------------------------|---|
| <b>Species Reactivity</b> | Human   |
| <b>Specificity</b>        | Detects cell surface expressed TNF- $\alpha$ (membrane and receptor bound forms) by flow cytometry. Detects human TNF- $\alpha$ in direct ELISAs and Western blots. In direct ELISAs, approximately 25–50% cross-reactivity with recombinant porcine TNF- $\alpha$ and recombinant rhesus macaque TNF- $\alpha$ is observed but no cross-reactivity with recombinant cotton rat TNF- $\alpha$ , recombinant rat TNF- $\alpha$ , recombinant human (rh) LT $\alpha$ 1/ $\beta$ 2, rhLT $\alpha$ 2/ $\beta$ 1, rhAPRIL, rhBAFF, rhEDA-A2, recombinant mouse EDA, rhFas Ligand, rhLIGHT, rhOX40 Ligand, rhTRAIL, rhTRANCE, rhTWEAK, or rhVEGI is observed. |
| <b>Source</b>             | Monoclonal Mouse IgG <sub>1</sub> Clone # 6401  |
| <b>Purification</b>       | Protein A or G purified from ascites  |
| <b>Immunogen</b>          | <i>E. coli</i> -derived recombinant human TNF- $\alpha$<br>Gly57-Leu233 (predicted)<br>Accession # P01375   |
| <b>Conjugate</b>          | Phycoerythrin<br>Excitation Wavelength: 488 nm<br>Emission Wavelength: 565-605 nm   |
| <b>Formulation</b>        | Supplied in a saline solution containing BSA and Sodium Azide. See Certificate of Analysis for details.<br><br>*Contains <0.1% Sodium Azide, which is not hazardous at this concentration according to GHS classifications. Refer to the Safety Data Sheet (SDS) for additional information and handling instructions.  |

## APPLICATIONS

**Please Note:** Optimal dilutions should be determined by each laboratory for each application. *General Protocols* are available in the *Technical Information* section on our website.

|                       | Recommended Concentration        | Sample    |
|-----------------------|----------------------------------|-----------|
| <b>Flow Cytometry</b> | 10 $\mu$ L/10 <sup>6</sup> cells | See Below |

## DATA



## PREPARATION AND STORAGE

|                                |  |
|--------------------------------|--|
| <b>Shipping</b>                | The product is shipped with polar packs. Upon receipt, store it immediately at the temperature recommended below.                                    |
| <b>Stability &amp; Storage</b> | <b>Protect from light. Do not freeze.</b> <ul style="list-style-type: none"> <li>● 12 months from date of receipt, 2 to 8 °C as supplied.</li> </ul> |

## BACKGROUND

TNF- $\alpha$  is a trimeric glycoprotein active in both membrane bound and secreted forms. TNF- $\alpha$  is produced by several lymphoid cells as well as by astrocytes, endothelial cells, and smooth muscle cells. TNF- $\alpha$  binds to TNF RI and TNF RII present on virtually all cell types where it triggers the activation of multiple signal transduction pathways and modulates the expression of a wide variety of genes.