

DESCRIPTION

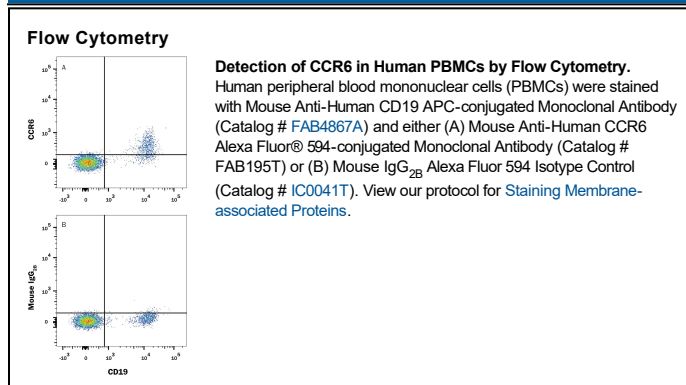
Species Reactivity	Human
Specificity	Detects human CCR6. Stains human CCR6 transfectants but not the parental cell line in flow cytometry. Does not cross-react with transfectants expressing human CCR1, CCR2, CCR3, CCR4, CCR5, CCR7, CXCR1, CXCR2, CXCR3, CXCR4, or STRL33.
Source	Monoclonal Mouse IgG _{2B} Clone # 53103
Purification	Protein A or G purified from ascites
Immunogen	NS0 mouse myeloma cell line transfected with human CCR6 Met1-Met374 Accession # P51684
Conjugate	Alexa Fluor 594 Excitation Wavelength: 590 nm Emission Wavelength: 617 nm
Formulation	Supplied in a saline solution containing BSA and Sodium Azide. See Certificate of Analysis for details. *Contains <0.1% Sodium Azide, which is not hazardous at this concentration according to GHS classifications. Refer to the Safety Data Sheet (SDS) for additional information and handling instructions.

APPLICATIONS

Please Note: Optimal dilutions should be determined by each laboratory for each application. *General Protocols* are available in the *Technical Information* section on our website.

	Recommended Concentration	Sample
Flow Cytometry	5 µL/10 ⁶ cells	See Below

DATA



PREPARATION AND STORAGE

Shipping	The product is shipped with polar packs. Upon receipt, store it immediately at the temperature recommended below.
Stability & Storage	Protect from light. Do not freeze. <ul style="list-style-type: none"> ● 12 months from date of receipt, 2 to 8 °C as supplied.

BACKGROUND

Human CCR6 (C-C Chemokine Receptor 6) is a 45-50 kDa member of the G-protein coupled receptor #1 family. It is a 374 amino acid (aa) 7-transmembrane glycoprotein that is responsive to a limited number of ligands, including CCL20/MIP-3α and the β-Defensins HBD-1 and -2. A large number of cell types express CCR6, which in human include neutrophils, spermatogonia, intestinal epithelial columnar cells, osteoblasts, IL-17 secreting CD161⁺ CCR6⁺ TCR-Vα 7.2 CD8⁺ T cells, monocytes, macrophages, CD4⁺ CCR4⁺ CXCR3⁻ CCR6⁺ IL-17 secreting Th17 cells, CD4⁺ CCR4⁻ CXCR3⁺ CCR6⁺ IL-17 secreting and IFN-γ secreting Th1 Th17 cells and hepatic carcinoma plus colon carcinoma cells. On mouse cells, CCR6 is found on CD4⁺ CD25⁺ CD45RO⁺ memory Tregs, CD4⁻ CD8⁻ CD25⁻ CD44⁺ c-Kit⁺ CCR6⁺ double-negative thymocytes, and CD116⁺ CCR6⁺ dendritic cells plus CD11c⁺ B220⁺ CD19⁺ IgM⁺ CCR6⁺ Peyer's Patch B cells. CCR6 activity may be cell or environment specific, and actions described to date include the promotion of cell proliferation, the downregulation of IL-12 production, and chemotaxis. The extracellular domains of human and mouse CCR6 share 52% aa sequence identity.

PRODUCT SPECIFIC NOTICES

This product is provided under an agreement between Life Technologies Corporation and R&D Systems, Inc. and the manufacture, use, sale or import of this product is subject to one or more US patents and corresponding non-US equivalents, owned by Life Technologies Corporation and its affiliates. The purchase of this product conveys to the buyer the non-transferable right to use the purchased amount of the product and components of the product only in research conducted by the buyer (whether the buyer is an academic or for-profit entity). The sale of this product is expressly conditioned on the buyer not using the product or its components (1) in manufacturing; (2) to provide a service, information, or data to an unaffiliated third party for payment; (3) for therapeutic, diagnostic or prophylactic purposes; (4) to resell, sell, or otherwise transfer this product or its components to any third party, or for any other commercial purpose. Life Technologies Corporation will not assert a claim against the buyer of the infringement of the above patents based on the manufacture, use or sale of a commercial product developed in research by the buyer in which this product or its components was employed, provided that neither this product nor any of its components was used in the manufacture of such product. For information on purchasing a license to this product for purposes other than research, contact Life Technologies Corporation, Cell Analysis Business Unit, Business Development, 29851 Willow Creek Road, Eugene, OR 97402, Tel: (541) 465-8300. Fax: (541) 335-0354.