

DESCRIPTION

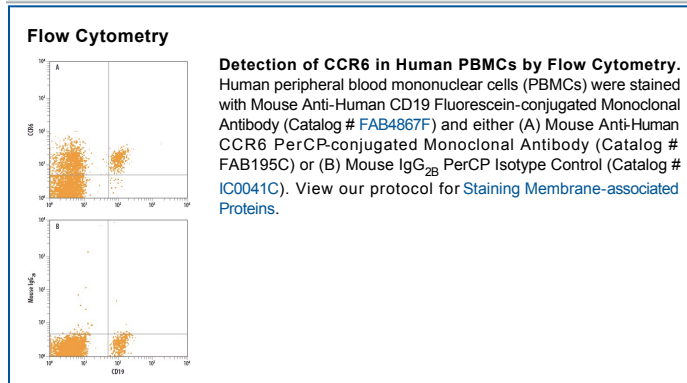
Species Reactivity	Human
Specificity	Detects human CCR6. Stains human CCR6 transfectants but not the parental cell line in flow cytometry. Does not cross-react with transfectants expressing human CCR1, CCR2, CCR3, CCR4, CCR5, CCR7, CXCR1, CXCR2, CXCR3, CXCR4, or STRL33.
Source	Monoclonal Mouse IgG _{2B} Clone # 53103
Purification	Protein A or G purified from ascites
Immunogen	NS0 mouse myeloma cell line transfected with human CCR6 Met1-Met374 Accession # P51684
Conjugate	PerCP (Peridinin-chlorophyll Protein Complex) Excitation Wavelength: 482 and 564 nm Emission Wavelength: 675 nm
Formulation	Supplied in a saline solution containing BSA and Sodium Azide. See Certificate of Analysis for details. *Contains <0.1% Sodium Azide, which is not hazardous at this concentration according to GHS classifications. Refer to the Safety Data Sheet (SDS) for additional information and handling instructions.

APPLICATIONS

Please Note: Optimal dilutions should be determined by each laboratory for each application. *General Protocols* are available in the *Technical Information* section on our website.

	Recommended Concentration	Sample
Flow Cytometry	10 μ L/10 ⁶ cells	See Below

DATA



PREPARATION AND STORAGE

Shipping The product is shipped with polar packs. Upon receipt, store it immediately at the temperature recommended below.

Stability & Storage **Protect from light. Do not freeze.**

- 12 months from date of receipt, 2 to 8 °C as supplied.

BACKGROUND

CCR6 is a seven transmembrane-spanning G protein-coupled receptor that binds the chemokine MIP-3 α and mediates the chemoattraction of B and T lymphocytes.