

## DESCRIPTION

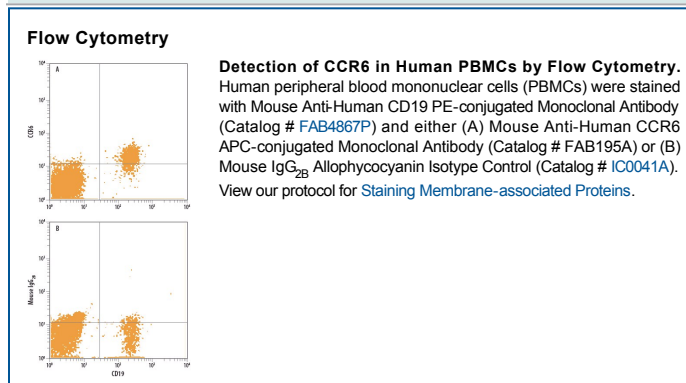
<b>Species Reactivity</b>	Human
<b>Specificity</b>	Detects human CCR6. Stains human CCR6 transfectants but not the parental cell line in flow cytometry. Does not cross-react with transfectants expressing human CCR1, CCR2, CCR3, CCR4, CCR5, CCR7, CXCR1, CXCR2, CXCR3, CXCR4, or STRL33.
<b>Source</b>	Monoclonal Mouse IgG <sub>2B</sub> Clone # 53103
<b>Purification</b>	Protein A or G purified from ascites
<b>Immunogen</b>	NS0 mouse myeloma cell line transfected with human CCR6 Met1-Met374 Accession # P51684
<b>Conjugate</b>	Allophycocyanin Excitation Wavelength: 620-650 nm Emission Wavelength: 660-670 nm
<b>Formulation</b>	Supplied in a saline solution containing BSA and Sodium Azide. See Certificate of Analysis for details.  *Contains <0.1% Sodium Azide, which is not hazardous at this concentration according to GHS classifications. Refer to the Safety Data Sheet (SDS) for additional information and handling instructions.

## APPLICATIONS

**Please Note:** Optimal dilutions should be determined by each laboratory for each application. *General Protocols* are available in the *Technical Information* section on our website.

	<b>Recommended Concentration</b>	<b>Sample</b>
<b>Flow Cytometry</b>	10 µL/10 <sup>6</sup> cells	See Below

## DATA



## PREPARATION AND STORAGE

**Shipping** The product is shipped with polar packs. Upon receipt, store it immediately at the temperature recommended below.

**Stability & Storage** **Protect from light. Do not freeze.**

- 12 months from date of receipt, 2 to 8 °C as supplied.

## BACKGROUND

CCR6 is a seven transmembrane-spanning G protein-coupled receptor that binds the chemokine MIP-3α and mediates the chemoattraction of B and T lymphocytes.