

DESCRIPTION

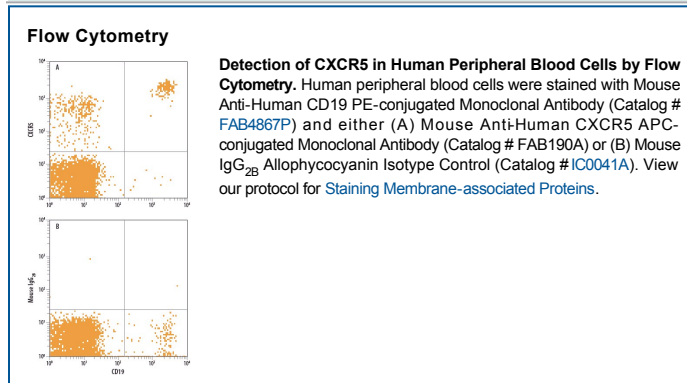
Species Reactivity	Human
Specificity	Stains human CXCR5 transfectants but not the parental cell lines in flow cytometry. Does not cross-react with human CXCR2, CXCR3, or CXCR4 transfectants.
Source	Monoclonal Mouse IgG _{2B} Clone # 51505
Purification	Protein A or G purified from hybridoma culture supernatant
Immunogen	NS0 mouse myeloma cell line transfected with human CXCR5 Met1-Phe372 Accession # P32302
Conjugate	Allophycocyanin Excitation Wavelength: 620-650 nm Emission Wavelength: 660-670 nm
Formulation	Supplied in a saline solution containing BSA and Sodium Azide. See Certificate of Analysis for details. *Contains <0.1% Sodium Azide, which is not hazardous at this concentration according to GHS classifications. Refer to the Safety Data Sheet (SDS) for additional information and handling instructions.

APPLICATIONS

Please Note: Optimal dilutions should be determined by each laboratory for each application. *General Protocols* are available in the *Technical Information* section on our website.

	Recommended Concentration	Sample
Flow Cytometry	10 μ L/10 ⁶ cells	See Below

DATA



PREPARATION AND STORAGE

Shipping The product is shipped with polar packs. Upon receipt, store it immediately at the temperature recommended below.

Stability & Storage **Protect from light. Do not freeze.**

- 12 months from date of receipt, 2 to 8 °C as supplied.

BACKGROUND

CXCR5, also known as BLR-1, is a 7 transmembrane domain protein expressed on B cells. CXCR5 mediates B cell migration following binding of CXCL13.