

DESCRIPTION

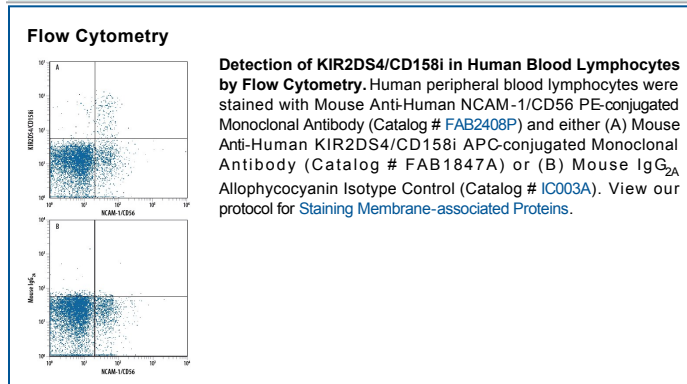
Species Reactivity	Human
Specificity	Detects KIR2DS4/CD158i in Western blots. In flow cytometry, this antibody stains cells transfected with KIR2DS4/CD158i. Does not stain cells transfected with KIR2DL1, 2DL2, 2DL3, 2DL4, 2DL5, 2DS1, 2DS2, 3DL1, 3DL2, or 3DS1.
Source	Monoclonal Mouse IgG _{2A} Clone # 179315
Purification	Protein A or G purified from hybridoma culture supernatant
Immunogen	BaF3 mouse pro-B cell line transfected with human KIR2DS4 Accession # P43632
Conjugate	Allophycocyanin Excitation Wavelength: 620-650 nm Emission Wavelength: 660-670 nm
Formulation	Supplied in a saline solution containing BSA and Sodium Azide. See Certificate of Analysis for details. *Contains <0.1% Sodium Azide, which is not hazardous at this concentration according to GHS classifications. Refer to the Safety Data Sheet (SDS) for additional information and handling instructions.

APPLICATIONS

Please Note: Optimal dilutions should be determined by each laboratory for each application. *General Protocols* are available in the *Technical Information* section on our website.

	Recommended Concentration	Sample
Flow Cytometry	10 μ L/10 ⁶ cells	See Below

DATA



PREPARATION AND STORAGE

Shipping	The product is shipped with polar packs. Upon receipt, store it immediately at the temperature recommended below.
Stability & Storage	Protect from light. Do not freeze. <ul style="list-style-type: none"> 12 months from date of receipt, 2 to 8 °C as supplied.

BACKGROUND

KIR2DS4 is an activating immunoglobulin-like receptor expressed on NK cells and some T cells. It has been implicated in the recognition of some HLA-C alleles (1). A deletion variant encoding a single domain secreted isoform of KIR2DS4 has also been described (2).

References:

1. Katz, G. *et al.* (2001) *J. Immunol.* **166**:7260.
2. Maxwell, L. *et al.* (2002) *Tissue Antigens* **60**:254.