

## DESCRIPTION

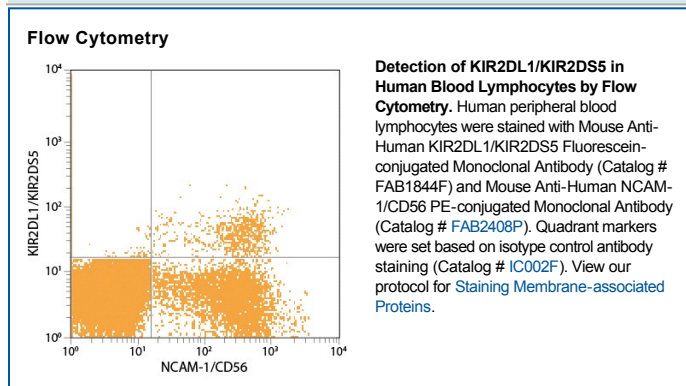
<b>Species Reactivity</b>	Human
<b>Specificity</b>	Detects human KIR2DL1/KIR2DS5 on transfected cells. It does not stain cells transfected with KIR2DL2, 2DL3, 2DL4, 2DL5, 2DS1, 2DS2, 2DS4, 3DL1, 3DL2, or 3DS1.
<b>Source</b>	Monoclonal Mouse IgG <sub>1</sub> Clone # 143211
<b>Purification</b>	Protein A or G purified from hybridoma culture supernatant
<b>Immunogen</b>	BaF3 mouse pro-B cell line transfected with human KIR2DL1/KIR2DS5 Accession # P43626
<b>Conjugate</b>	Fluorescein Excitation Wavelength: 488 nm Emission Wavelength: 515-545 nm (FITC)
<b>Formulation</b>	Supplied in a saline solution containing BSA and Sodium Azide. See Certificate of Analysis for details.  *Contains <0.1% Sodium Azide, which is not hazardous at this concentration according to GHS classifications. Refer to the Safety Data Sheet (SDS) for additional information and handling instructions.

## APPLICATIONS

**Please Note:** Optimal dilutions should be determined by each laboratory for each application. *General Protocols* are available in the *Technical Information* section on our website.

	Recommended Concentration	Sample
<b>Flow Cytometry</b>	10 $\mu$ L/10 <sup>6</sup> cells	See Below

## DATA



## PREPARATION AND STORAGE

<b>Shipping</b>	The product is shipped with polar packs. Upon receipt, store it immediately at the temperature recommended below.
<b>Stability &amp; Storage</b>	<b>Protect from light. Do not freeze.</b> <ul style="list-style-type: none"> <li>● 12 months from date of receipt, 2 to 8 °C as supplied.</li> </ul>

## BACKGROUND

KIR2DL1 is one of several immunoglobulin-like receptors expressed on NK cells that bind MHC class I molecules and transmit inhibitory signals. KIR2DL1 is specific for HLA-C alleles with Asn77 and Lys80.