

DESCRIPTION

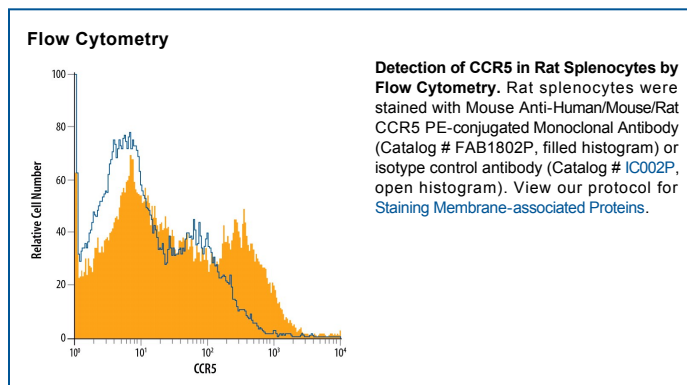
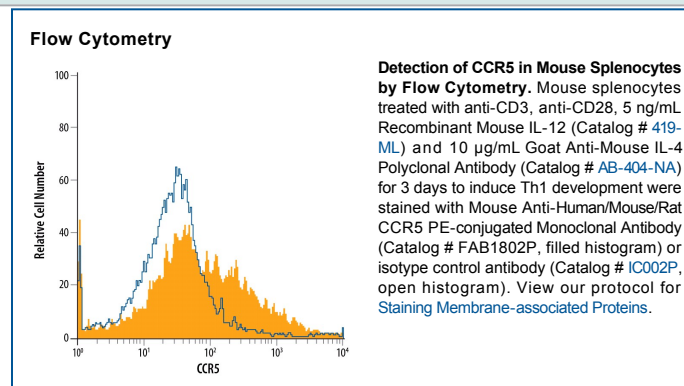
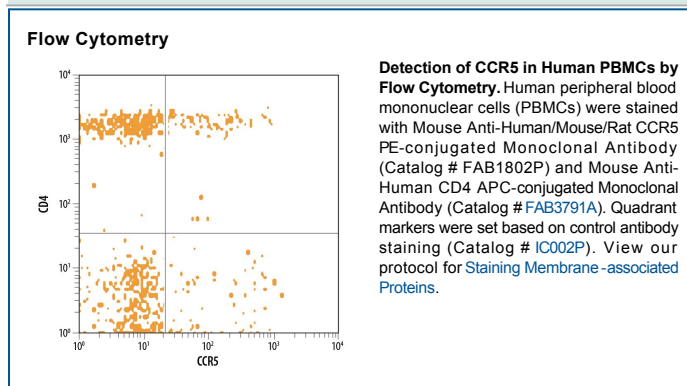
Species Reactivity	Human/Mouse/Rat
Specificity	Detects human CCR5 in Western blots. For additional information regarding epitope specificity for this antibody and other R&D Systems anti-human CCR5 antibodies, see Reference 1.
Source	Monoclonal Mouse IgG ₁ Clone # CTC5
Purification	Protein A or G purified from hybridoma culture supernatant
Immunogen	CHO Chinese hamster ovary cell line transfected with human CCR5
Conjugate	Phycoerythrin Excitation Wavelength: 488 nm Emission Wavelength: 565-605 nm
Formulation	Supplied in a saline solution containing BSA and Sodium Azide. See Certificate of Analysis for details. *Contains <0.1% Sodium Azide, which is not hazardous at this concentration according to GHS classifications. Refer to the Safety Data Sheet (SDS) for additional information and handling instructions.

APPLICATIONS

Please Note: Optimal dilutions should be determined by each laboratory for each application. *General Protocols* are available in the *Technical Information* section on our website.

	Recommended Concentration	Sample
Flow Cytometry	10 µL/10 ⁶ cells	See Below

DATA



PREPARATION AND STORAGE

Shipping	The product is shipped with polar packs. Upon receipt, store it immediately at the temperature recommended below.
Stability & Storage	Protect from light. Do not freeze. <ul style="list-style-type: none"> ● 12 months from date of receipt, 2 to 8 °C as supplied.

BACKGROUND

CCR5 is a G protein-linked seven transmembrane domain chemokine receptor. CCR5 serves as a receptor for several chemokines including MIP-1 α , MIP-1 β , MCP-2, and RANTES. It also functions as a coreceptor for Macrophage Tropic HIV-1 infection.

References:

1. Lee, B. *et al.* (1999) J. Biol. Chem. **274**:9617.