

## DESCRIPTION

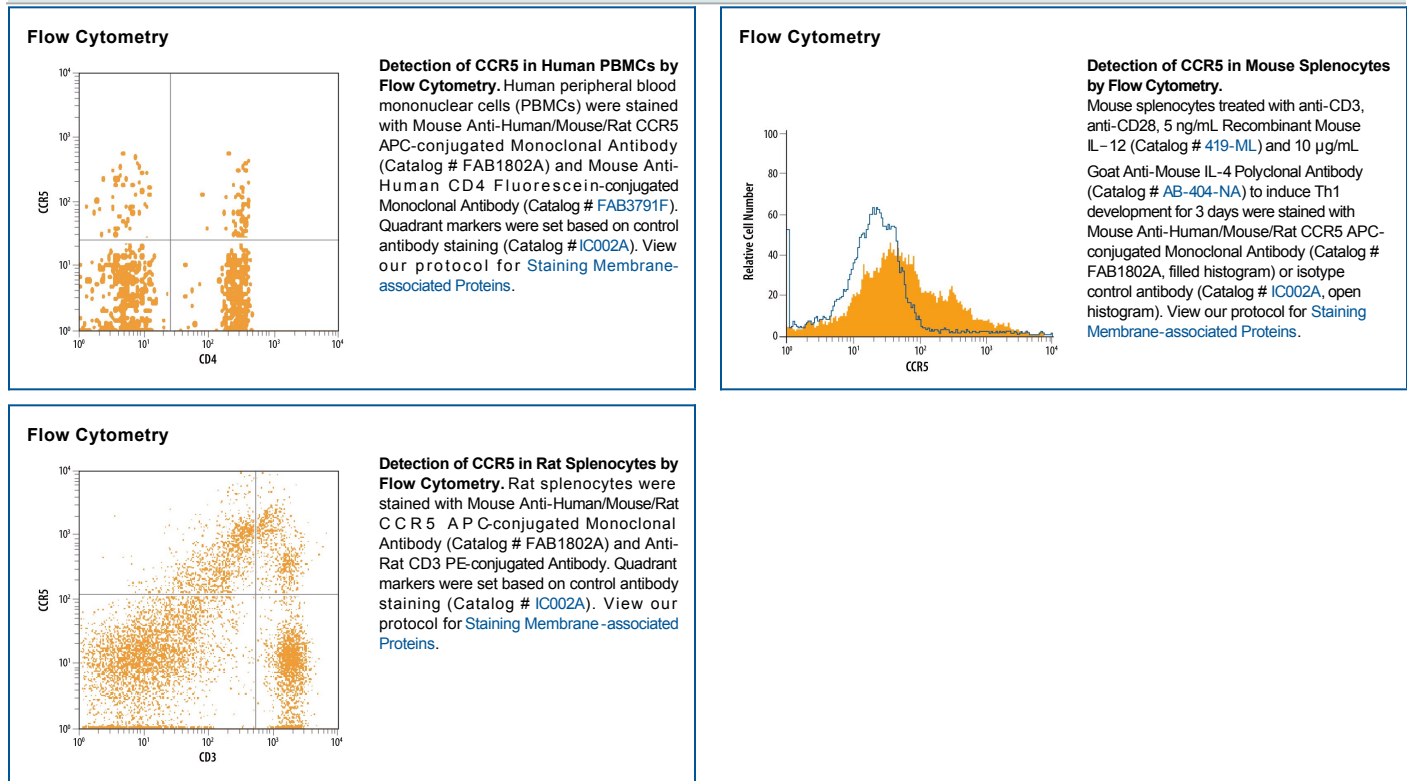
<b>Species Reactivity</b>	Human/Mouse/Rat
<b>Specificity</b>	Detects human CCR5 in Western blots. For additional information regarding epitope specificity for this antibody and other R&D Systems anti-human CCR5 antibodies, see Reference 1.
<b>Source</b>	Monoclonal Mouse IgG <sub>1</sub> Clone # CTC5
<b>Purification</b>	Protein A or G purified from hybridoma culture supernatant
<b>Immunogen</b>	CHO Chinese hamster ovary cell line transfected with human CCR5
<b>Conjugate</b>	Allophycocyanin Excitation Wavelength: 620-650 nm Emission Wavelength: 660-670 nm
<b>Formulation</b>	Supplied in a saline solution containing BSA and Sodium Azide. See Certificate of Analysis for details.  *Contains <0.1% Sodium Azide, which is not hazardous at this concentration according to GHS classifications. Refer to the Safety Data Sheet (SDS) for additional information and handling instructions.

## APPLICATIONS

**Please Note:** Optimal dilutions should be determined by each laboratory for each application. *General Protocols* are available in the *Technical Information* section on our website.

	<b>Recommended Concentration</b>	<b>Sample</b>
<b>Flow Cytometry</b>	10 µL/10 <sup>6</sup> cells	See Below

## DATA



## PREPARATION AND STORAGE

<b>Shipping</b>	The product is shipped with polar packs. Upon receipt, store it immediately at the temperature recommended below.
<b>Stability &amp; Storage</b>	<b>Protect from light. Do not freeze.</b> <ul style="list-style-type: none"> <li>● 12 months from date of receipt, 2 to 8 °C as supplied.</li> </ul>

## BACKGROUND

CCR5 is a G protein-linked seven transmembrane domain chemokine receptor. CCR5 serves as a receptor for several chemokines including MIP-1 $\alpha$ , MIP-1 $\beta$ , MCP-2, and RANTES. It also functions as a coreceptor for Macrophage Tropic HIV-1 infection.

## References:

1. Lee, B. *et al.* (1999) *J. Biol. Chem.* **274**:9617.