

## DESCRIPTION

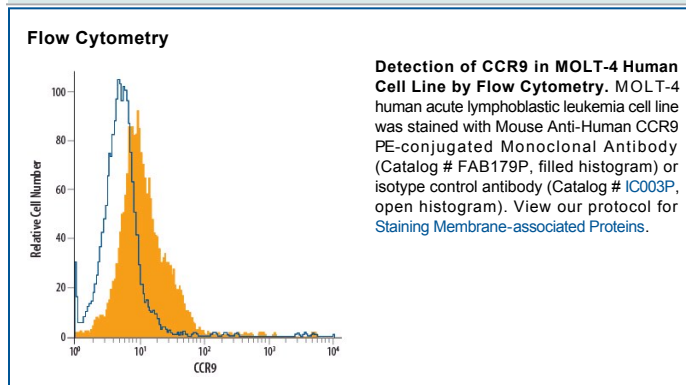
<b>Species Reactivity</b>	Human
<b>Specificity</b>	Specifically stains human CCR9 transfectants and MOLT-4 cells. It does not react with the parental BaF3 cells or human CCR7-transfected BaF3 cells.
<b>Source</b>	Monoclonal Mouse IgG <sub>2A</sub> Clone # 112509
<b>Purification</b>	Protein A or G purified from hybridoma culture supernatant
<b>Immunogen</b>	BaF3 mouse pro-B cell line transfected with human CCR9 Met1-Leu369 Accession # P51686
<b>Conjugate</b>	Phycoerythrin Excitation Wavelength: 488 nm Emission Wavelength: 565-605 nm
<b>Formulation</b>	Supplied in a saline solution containing BSA and Sodium Azide. See Certificate of Analysis for details.  *Contains <0.1% Sodium Azide, which is not hazardous at this concentration according to GHS classifications. Refer to the Safety Data Sheet (SDS) for additional information and handling instructions.

## APPLICATIONS

**Please Note:** Optimal dilutions should be determined by each laboratory for each application. *General Protocols* are available in the *Technical Information* section on our website.

	<b>Recommended Concentration</b>	<b>Sample</b>
<b>Flow Cytometry</b>	10 $\mu$ L/10 <sup>6</sup> cells	See Below

## DATA



## PREPARATION AND STORAGE

**Shipping** The product is shipped with polar packs. Upon receipt, store it immediately at the temperature recommended below.

**Stability & Storage** **Protect from light. Do not freeze.**

- 12 months from date of receipt, 2 to 8 °C as supplied.

## BACKGROUND

CCR9 is a G protein-linked seven transmembrane domain cytokine receptor. CCR9 serves as a receptor for CCL25/TECK. It is expressed on mature and immature thymocytes and some peripheral T and B cells.