

## DESCRIPTION

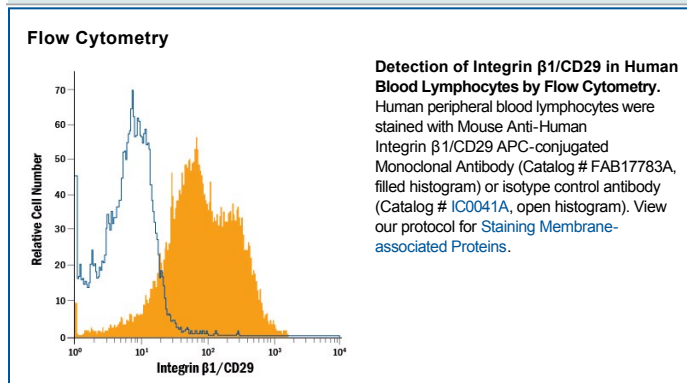
<b>Species Reactivity</b>	Human
<b>Specificity</b>	Detects human Integrin $\beta$ 1/CD29 in direct ELISAs and Western blots. In Western blots, no cross-reactivity with recombinant human Integrin $\beta$ 3, $\beta$ 4, $\beta$ 5, $\beta$ 8, recombinant mouse Integrin $\beta$ 1, $\beta$ 2, $\beta$ 6, or $\beta$ 7 is observed.
<b>Source</b>	Monoclonal Mouse IgG <sub>2B</sub> Clone # 419127
<b>Purification</b>	Protein A or G purified from hybridoma culture supernatant
<b>Immunogen</b>	Chinese hamster ovary cell line CHO-derived recombinant human Integrin $\beta$ 1/CD29 Gln21-Asp728 (predicted) Accession # P05556
<b>Conjugate</b>	Allophycocyanin Excitation Wavelength: 620-650 nm Emission Wavelength: 660-670 nm
<b>Formulation</b>	Supplied in a saline solution containing BSA and Sodium Azide. See Certificate of Analysis for details.  *Contains <0.1% Sodium Azide, which is not hazardous at this concentration according to GHS classifications. Refer to the Safety Data Sheet (SDS) for additional information and handling instructions.

## APPLICATIONS

**Please Note:** Optimal dilutions should be determined by each laboratory for each application. *General Protocols* are available in the *Technical Information* section on our website.

	<b>Recommended Concentration</b>	<b>Sample</b>
<b>Flow Cytometry</b>	10 $\mu$ L/10 <sup>6</sup> cells	See Below

## DATA



## PREPARATION AND STORAGE

<b>Shipping</b>	The product is shipped with polar packs. Upon receipt, store it immediately at the temperature recommended below.
<b>Stability &amp; Storage</b>	<b>Protect from light. Do not freeze.</b> <ul style="list-style-type: none"> <li>● 12 months from date of receipt, 2 to 8 °C as supplied.</li> </ul>

## BACKGROUND

The Integrin  $\beta$ 1 subunit, also known as VLA- $\beta$  chain and CD29, associates with at least ten different Integrin  $\alpha$  subunits.