

## DESCRIPTION

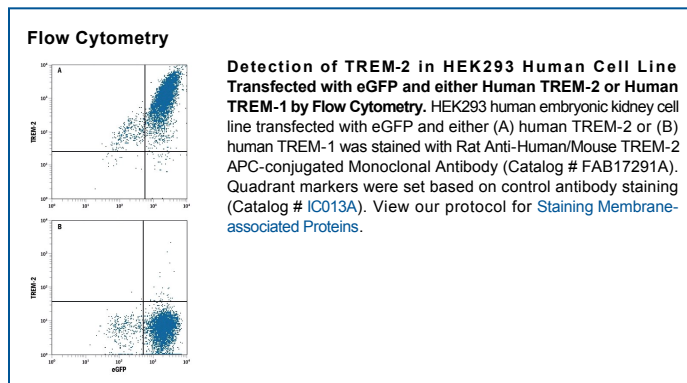
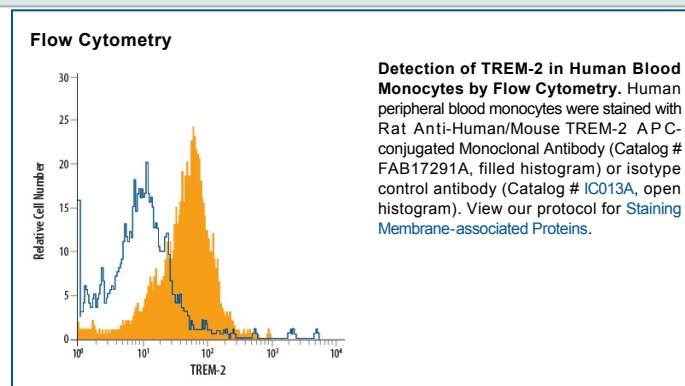
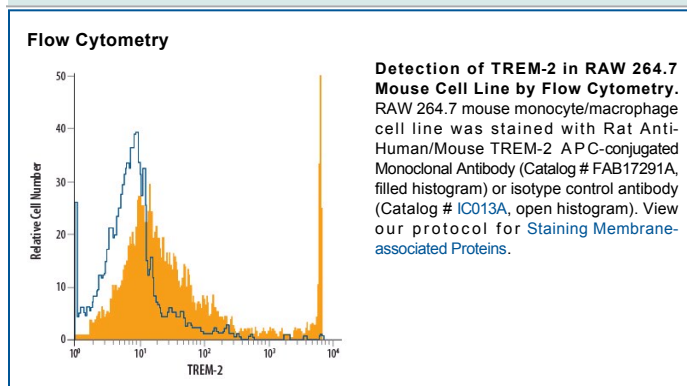
<b>Species Reactivity</b>	Human/Mouse
<b>Specificity</b>	Detects human and mouse TREM-2 in direct ELISAs and Western blots. Stains TREM-2 transfectants but not TREM-1 transfectants.
<b>Source</b>	Monoclonal Rat IgG <sub>2B</sub> Clone # 237920
<b>Purification</b>	Protein A or G purified from hybridoma culture supernatant
<b>Immunogen</b>	Mouse myeloma cell line NS0-derived recombinant mouse TREM-2 extracellular domain Accession # Q99NH8
<b>Conjugate</b>	Allophycocyanin Excitation Wavelength: 620-650 nm Emission Wavelength: 660-670 nm
<b>Formulation</b>	Supplied in a saline solution containing BSA and Sodium Azide. See Certificate of Analysis for details.  *Contains <0.1% Sodium Azide, which is not hazardous at this concentration according to GHS classifications. Refer to the Safety Data Sheet (SDS) for additional information and handling instructions.

## APPLICATIONS

**Please Note:** Optimal dilutions should be determined by each laboratory for each application. *General Protocols* are available in the *Technical Information* section on our website.

	Recommended Concentration	Sample
<b>Flow Cytometry</b>	10 µL/10 <sup>6</sup> cells	See Below

## DATA



## PREPARATION AND STORAGE

<b>Shipping</b>	The product is shipped with polar packs. Upon receipt, store it immediately at the temperature recommended below.
<b>Stability &amp; Storage</b>	<b>Protect from light. Do not freeze.</b> <ul style="list-style-type: none"> <li>● 12 months from date of receipt, 2 to 8 °C as supplied.</li> </ul>

## BACKGROUND

TREM-2 is a single Ig domain receptor expressed by cells of myeloid lineage. Two closely related transcripts were reported in mouse and designated TREM-2a and TREM-2b. TREM-2b is a pattern recognition receptor that binds anionic ligands. TREM-2 associates with the adapter protein DAP12 to deliver an activating signal that plays a role in both innate and adaptive immune responses.