

DESCRIPTION

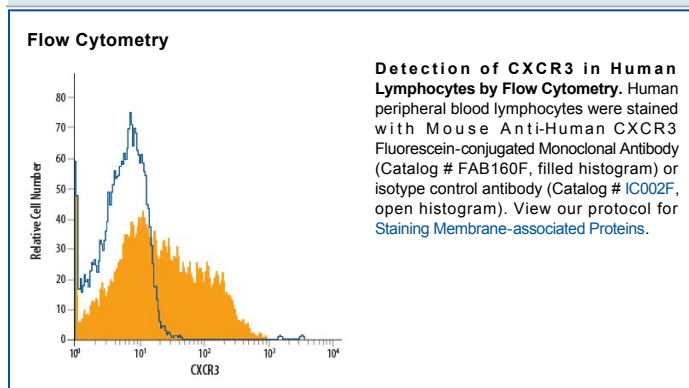
Species Reactivity	Human
Specificity	Detects human CXCR3.
Source	Monoclonal Mouse IgG ₁ Clone # 49801
Purification	Protein A or G purified from ascites
Immunogen	NS0 mouse myeloma cell line transfected with human CXCR3 Met1-Leu368 Accession # P49682
Conjugate	Fluorescein Excitation Wavelength: 488 nm Emission Wavelength: 515-545 nm
Formulation	Supplied in a saline solution containing BSA and Sodium Azide. See Certificate of Analysis for details. *Contains <0.1% Sodium Azide, which is not hazardous at this concentration according to GHS classifications. Refer to the Safety Data Sheet (SDS) for additional information and handling instructions.

APPLICATIONS

Please Note: Optimal dilutions should be determined by each laboratory for each application. *General Protocols* are available in the *Technical Information* section on our website.

	Recommended Concentration	Sample
Flow Cytometry	10 μ L/10 ⁶ cells	See Below

DATA



PREPARATION AND STORAGE

Shipping The product is shipped with polar packs. Upon receipt, store it immediately at the temperature recommended below.

Stability & Storage **Protect from light. Do not freeze.**

- 12 months from date of receipt, 2 to 8 °C as supplied.

BACKGROUND

CXCR3 is a G protein-coupled chemokine receptor that binds the α chemokines MIG (CXCL9), IP-10 (CXCL10), and I-TAC (CXCL11). CXCR3 is expressed on activated T cells, B cells, and NK cells.