

DESCRIPTION

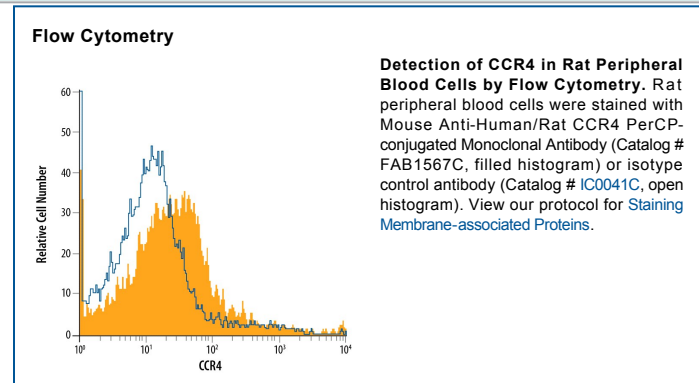
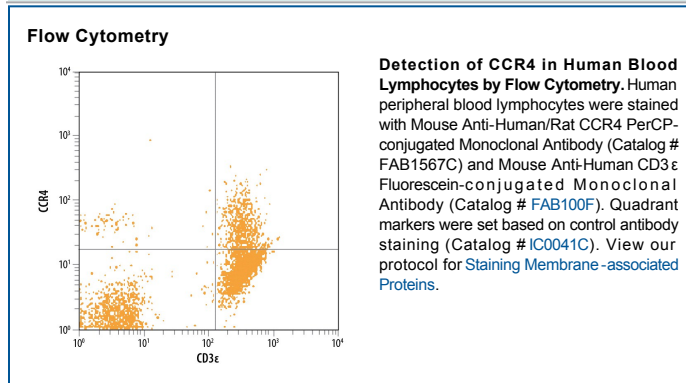
Species Reactivity	Human/Rat
Specificity	Stains human CCR4-transfected cell lines but not the corresponding parent cell lines. Also detects human CCR4 on human PBLs and platelets and rat CCR4 on rat splenocytes.
Source	Monoclonal Mouse IgG _{2B} Clone # 205410
Purification	Protein A or G purified from hybridoma culture supernatant
Immunogen	Human CCR4 transfectants Met1-Leu360 Accession # P51679
Conjugate	PerCP (Peridinin-chlorophyll Protein Complex) Excitation Wavelength: 482 and 564 nm Emission Wavelength: 675 nm
Formulation	Supplied in a saline solution containing BSA and Sodium Azide. See Certificate of Analysis for details. *Contains <0.1% Sodium Azide, which is not hazardous at this concentration according to GHS classifications. Refer to the Safety Data Sheet (SDS) for additional information and handling instructions.

APPLICATIONS

Please Note: Optimal dilutions should be determined by each laboratory for each application. *General Protocols* are available in the *Technical Information* section on our website.

	Recommended Concentration	Sample
Flow Cytometry	10 μ L/10 ⁶ cells	See Below

DATA



PREPARATION AND STORAGE

Shipping	The product is shipped with polar packs. Upon receipt, store it immediately at the temperature recommended below.
Stability & Storage	Protect from light. Do not freeze. <ul style="list-style-type: none"> ● 12 months from date of receipt, 2 to 8 °C as supplied.

BACKGROUND

CCR4 is a G protein-linked seven transmembrane domain chemokine receptor that binds the chemokines CCL17/TARC and CCL22/MDC. Current evidence suggests that CCR4 expression is associated with Th-2 type T cells and with platelets. CCR4 expression has also been reported in mature dendritic cells.