

DESCRIPTION

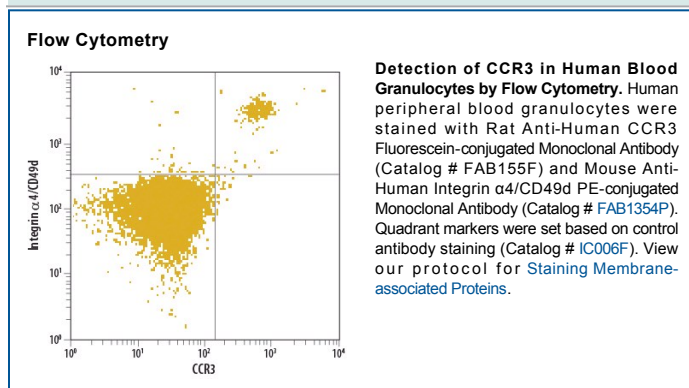
| | |
|---------------------------|--|
| Species Reactivity | Human |
| Specificity | Detects human CCR3 transfectants in flow cytometry. In flow cytometry, no cross-reactivity with CCR1, CCR2, CCR5, and CCR6 transfectants or the parental cell line is observed. Detects CCR3 on peripheral blood eosinophils. |
| Source | Monoclonal Rat IgG _{2A} Clone # 61828 |
| Purification | Protein A or G purified from hybridoma culture supernatant |
| Immunogen | Y3 rat myeloid cell line transfected with human CCR3 Accession # P51677 |
| Conjugate | Fluorescein Excitation Wavelength: 488 nm Emission Wavelength: 515-545 nm |
| Formulation | Supplied in a saline solution containing BSA and Sodium Azide. See Certificate of Analysis for details. *Contains <0.1% Sodium Azide, which is not hazardous at this concentration according to GHS classifications. Refer to the Safety Data Sheet (SDS) for additional information and handling instructions. |

APPLICATIONS

Please Note: Optimal dilutions should be determined by each laboratory for each application. *General Protocols* are available in the *Technical Information* section on our website.

| | Recommended Concentration | Sample |
|----------------|-----------------------------|-----------|
| Flow Cytometry | 10 µL/10 ⁶ cells | See Below |

DATA



PREPARATION AND STORAGE

| | |
|--------------------------------|--|
| Shipping | The product is shipped with polar packs. Upon receipt, store it immediately at the temperature recommended below. |
| Stability & Storage | Protect from light. Do not freeze. <ul style="list-style-type: none"> 12 months from date of receipt, 2 to 8 °C as supplied. |

BACKGROUND

CCR3 is a G protein-linked seven transmembrane chemokine receptor that preferentially binds eotaxin and eotaxin-2.