

## DESCRIPTION

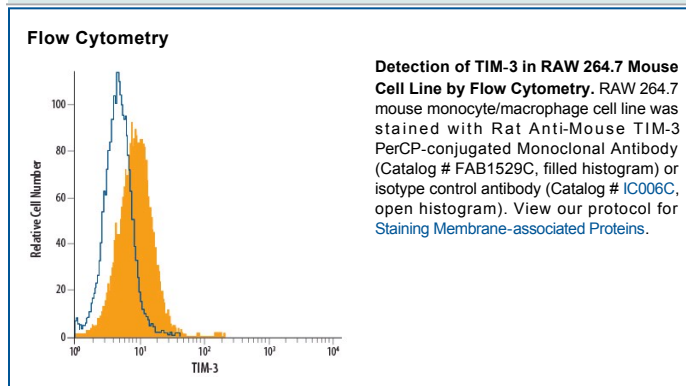
<b>Species Reactivity</b>	Mouse
<b>Specificity</b>	Detects mouse TIM-3 in direct ELISAs and Western blots.
<b>Source</b>	Monoclonal Rat IgG <sub>2A</sub> Clone # 215008
<b>Purification</b>	Protein A or G purified from hybridoma culture supernatant
<b>Immunogen</b>	Mouse myeloma cell line NS0-derived recombinant mouse TIM-3 Arg20-Ala193 Accession # Q8VIM0
<b>Conjugate</b>	PerCP (Peridinin-chlorophyll Protein Complex) Excitation Wavelength: 482 and 564 nm Emission Wavelength: 675 nm
<b>Formulation</b>	Supplied in a saline solution containing BSA and Sodium Azide. See Certificate of Analysis for details.  *Contains <0.1% Sodium Azide, which is not hazardous at this concentration according to GHS classifications. Refer to the Safety Data Sheet (SDS) for additional information and handling instructions.

## APPLICATIONS

**Please Note:** Optimal dilutions should be determined by each laboratory for each application. [General Protocols](#) are available in the [Technical Information](#) section on our website.

	Recommended Concentration	Sample
<b>Flow Cytometry</b>	10 $\mu$ L/10 <sup>6</sup> cells	See Below

## DATA



## PREPARATION AND STORAGE

<b>Shipping</b>	The product is shipped with polar packs. Upon receipt, store it immediately at the temperature recommended below.
<b>Stability &amp; Storage</b>	<b>Protect from light. Do not freeze.</b> <ul style="list-style-type: none"> <li>● 12 months from date of receipt, 2 to 8 °C as supplied.</li> </ul>

## BACKGROUND

TIM-3 (T cell immunoglobulin and mucin domain-3) is a 60 kDa member of the TIM family of immune regulating molecules. TIMs are type I transmembrane glycoproteins with one Ig-like V-type domain and a Ser/Thr-rich mucin stalk (1 - 3). There are three TIM genes in human and eight in mouse. Mature mouse TIM-3 consists of a 174 aa extracellular domain (ECD), a 21 aa transmembrane segment (TM), and a 67 aa cytoplasmic tail (4). Two alternately spliced isoforms have been reported in mouse which lack either the TM or both the TM and mucin regions (5, 6). Within the ECD, mouse TIM-3 shares 58% and 74% aa sequence identity with human and rat TIM-3, respectively. TIM-3 is specifically expressed on Th1 cells whereas TIM-1 and TIM-2 are expressed on TH2 cells. In chronic inflammation, autoimmune disorders, and some cancers, TIM-3 is upregulated on several other hematopoietic cell types and on hippocampal neurons (9 - 12). The glycosylated Ig domain of TIM-3 binds cell-associated galectin-9 which induces TIM-3 Tyr phosphorylation and proapoptotic signaling (10, 13). TIM-3 functions as a negative regulator of Th1 cell activity. Its blockade results in increased IFN- $\gamma$  production, Th1 cell proliferation, and cytotoxicity (5, 7, 12, 14). TIM-3 may play a role in regulatory T cell development, (7) inflammation, (15) and immune tolerance (5, 13, 14). Soluble mouse TIM-3 has been shown to inhibit anti-tumor effector T cell responses and to enhance autoimmune reactions (6, 7).

## References:

1. Anderson, A.C. and D.E. Anderson (2006) *Curr. Opin. Immunol.* **18**:665.
2. Mariat, C. *et al.* (2005) *Phil. Trans. R. Soc. B* **360**:1681.
3. Meyers, J.H. *et al.* (2005) *Trends Mol. Med.* **11**:362.
4. Monney, L. *et al.* (2002) *Nature* **415**:536.
5. Sabatos, C.A. *et al.* (2003) *Nat. Immunol.* **4**:1102.
6. Geng, H. *et al.* (2006) *J. Immunol.* **176**:1411.
7. Sanchez-Fueyo, A. *et al.* (2003) *Nat. Immunol.* **4**:1093.
8. Khademi, M. *et al.* (2004) *J. Immunol.* **172**:7169.
9. Wiener, Z. *et al.* (2007) *J. Invest. Dermatol.* **127**:906.
10. van de Weyer, P.S. *et al.* (2006) *Biochem. Biophys. Res. Commun.* **351**:571.
11. Gielen, A.W. *et al.* (2005) *J. Neuroimmunol.* **164**:93.
12. Oikawa, T. *et al.* (2006) *J. Immunol.* **177**:4281.
13. Zhu, C. *et al.* (2005) *Nat. Immunol.* **6**:1245.
14. Koguchi, K. *et al.* (2006) *J. Exp. Med.* **203**:1413.
15. Frisancho-Kiss, S. *et al.* (2006) *J. Immunol.* **176**:6411.