

DESCRIPTION

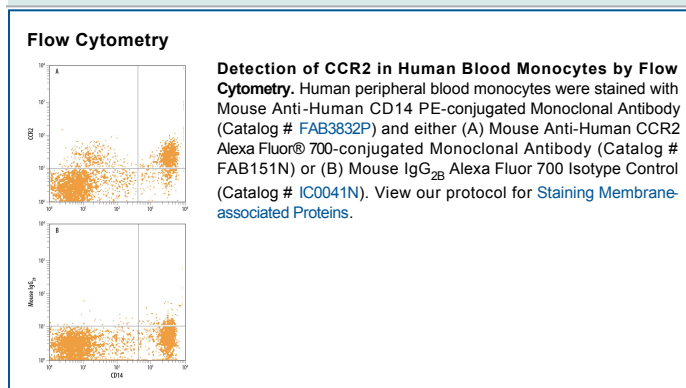
Species Reactivity	Human
Specificity	Detects human CCR-2 transfectants but not the parental cell line or CCR-5 transfectants.
Source	Monoclonal Mouse IgG _{2B} Clone # 48607
Purification	Protein A or G purified from ascites
Immunogen	NS0 mouse myeloma cell line transfected with human CCR2 Met1-Leu360 Accession # NP_001116868
Conjugate	Alexa Fluor 700 Excitation Wavelength: 675-700 nm Emission Wavelength: 723 nm
Formulation	Supplied in a saline solution containing BSA and Sodium Azide. See Certificate of Analysis for details. *Contains <0.1% Sodium Azide, which is not hazardous at this concentration according to GHS classifications. Refer to the Safety Data Sheet (SDS) for additional information and handling instructions.

APPLICATIONS

Please Note: Optimal dilutions should be determined by each laboratory for each application. *General Protocols* are available in the *Technical Information* section on our website.

	Recommended Concentration	Sample
Flow Cytometry	5 µg/mL	See Below

DATA



PREPARATION AND STORAGE

Shipping	The product is shipped with polar packs. Upon receipt, store it immediately at the temperature recommended below.
Stability & Storage	Protect from light. Do not freeze. <ul style="list-style-type: none"> 12 months from date of receipt, 2 to 8 °C as supplied.

BACKGROUND

CCR2 is a G-protein linked seven transmembrane domain spanning chemokine receptor that preferentially binds monocyte chemoattractant proteins-1 and -3 (MCP-1 and MCP-3). Two isoforms of this receptor (CCR2A and CCR2B) are expressed on cell surfaces as a result of alternate splicing from the same gene. These two CCR2 variants differ only at their intracellular carboxyl terminals, with the CCR2A form possessing 14 additional amino acids. This may provide a mechanism by which cells responding to similar extracellular ligands can activate different intracellular second messengers. Cells that respond to the action of MCP-1 and therefore are likely to express CCR2 receptors, include monocytes, T cells, NK cells, basophils, mast cells and dendritic cells. A recent report suggests that B cells may also express CCR2 receptors. The recognition that a variety of chemokine receptors, including CCR2, can serve as HIV fusion co-factors and as facilitators of T cell recruitment during inflammation makes chemokine receptor monitoring an important exercise in elucidating the HIV infection process and the regulation of inflammatory reactions.

PRODUCT SPECIFIC NOTICES

This product is provided under an agreement between Life Technologies Corporation and R&D Systems, Inc, and the manufacture, use, sale or import of this product is subject to one or more US patents and corresponding non-US equivalents, owned by Life Technologies Corporation and its affiliates. The purchase of this product conveys to the buyer the non-transferable right to use the purchased amount of the product and components of the product only in research conducted by the buyer (whether the buyer is an academic or for-profit entity). The sale of this product is expressly conditioned on the buyer not using the product or its components (1) in manufacturing; (2) to provide a service, information, or data to an unaffiliated third party for payment; (3) for therapeutic, diagnostic or prophylactic purposes; (4) to resell, sell, or otherwise transfer this product or its components to any third party, or for any other commercial purpose. Life Technologies Corporation will not assert a claim against the buyer of the infringement of the above patents based on the manufacture, use or sale of a commercial product developed in research by the buyer in which this product or its components was employed, provided that neither this product nor any of its components was used in the manufacture of such product. For information on purchasing a license to this product for purposes other than research, contact Life Technologies Corporation, Cell Analysis Business Unit, Business Development, 29851 Willow Creek Road, Eugene, OR 97402, Tel: (541) 465-8300. Fax: (541) 335-0354.