

## DESCRIPTION

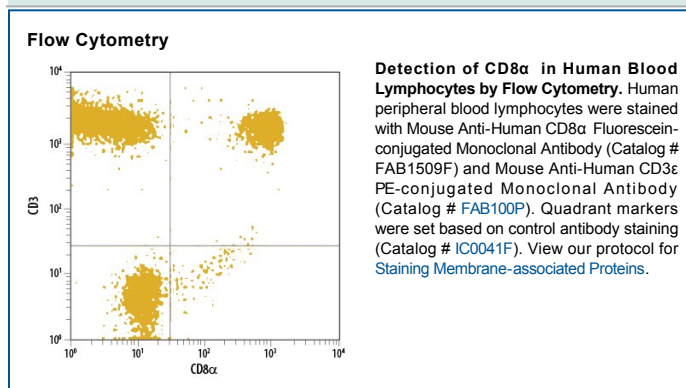
|                           |  |
|---------------------------|--|
| <b>Species Reactivity</b> | Human  |
| <b>Specificity</b>        | Detects human CD8 $\alpha$ in direct ELISAs. In direct ELISAs, no cross-reactivity with mouse CD8 $\alpha$ is observed.  |
| <b>Source</b>             | Monoclonal Mouse IgG <sub>2B</sub> Clone # 37006   |
| <b>Purification</b>       | Protein A or G purified from hybridoma culture supernatant   |
| <b>Immunogen</b>          | Mouse myeloma cell line NS0-derived recombinant human CD8 $\alpha$<br>Ser22-Val198<br>Accession # NP_741969  |
| <b>Conjugate</b>          | Fluorescein<br>Excitation Wavelength: 488 nm<br>Emission Wavelength: 515-545 nm  |
| <b>Formulation</b>        | Supplied in a saline solution containing BSA and Sodium Azide. See Certificate of Analysis for details.<br><br>*Contains <0.1% Sodium Azide, which is not hazardous at this concentration according to GHS classifications. Refer to the Safety Data Sheet (SDS) for additional information and handling instructions. |

## APPLICATIONS

**Please Note:** Optimal dilutions should be determined by each laboratory for each application. *General Protocols* are available in the *Technical Information* section on our website.

|                       | Recommended Concentration        | Sample    |
|-----------------------|----------------------------------|-----------|
| <b>Flow Cytometry</b> | 10 $\mu$ L/10 <sup>6</sup> cells | See Below |

## DATA



## PREPARATION AND STORAGE

|                                |  |
|--------------------------------|--|
| <b>Shipping</b>                | The product is shipped with polar packs. Upon receipt, store it immediately at the temperature recommended below.                                  |
| <b>Stability &amp; Storage</b> | <b>Protect from light. Do not freeze.</b> <ul style="list-style-type: none"> <li>12 months from date of receipt, 2 to 8 °C as supplied.</li> </ul> |

## BACKGROUND

CD8 is a heterodimeric glycoprotein consisting of an  $\alpha$  and  $\beta$  chain. It is expressed on cytolytic T cells and functions in conjunction with the T cell receptor in the recognition of MHC/peptide complexes.