

## DESCRIPTION

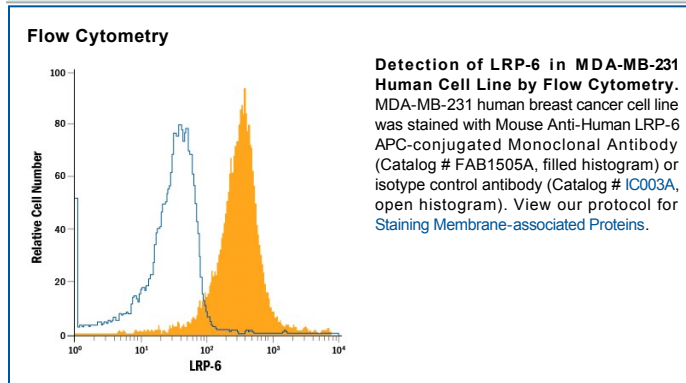
<b>Species Reactivity</b>	Human
<b>Specificity</b>	Detects human LRP-6 in direct ELISAs. In direct ELISAs, approximately 5% cross-reactivity with recombinant mouse (rm) LRP-6 and no cross-reactivity with recombinant human (rh) LRP-1, -4, -5, rhLRP-6 (intracellular domain), or rhLDL R is observed.
<b>Source</b>	Monoclonal Mouse IgG <sub>2A</sub> Clone # 255302
<b>Purification</b>	Protein A or G purified from hybridoma culture supernatant
<b>Immunogen</b>	Mouse myeloma cell line NS0-derived recombinant human LRP-6 Ala20-Pro1368 Accession # O75581
<b>Conjugate</b>	Allophycocyanin Excitation Wavelength: 620-650 nm Emission Wavelength: 660-670 nm
<b>Formulation</b>	Supplied in a saline solution containing BSA and Sodium Azide. See Certificate of Analysis for details.  *Contains <0.1% Sodium Azide, which is not hazardous at this concentration according to GHS classifications. Refer to the Safety Data Sheet (SDS) for additional information and handling instructions.

## APPLICATIONS

**Please Note:** Optimal dilutions should be determined by each laboratory for each application. *General Protocols* are available in the *Technical Information* section on our website.

	<b>Recommended Concentration</b>	<b>Sample</b>
<b>Flow Cytometry</b>	10 µL/10 <sup>6</sup> cells	See Below

## DATA



## PREPARATION AND STORAGE

**Shipping** The product is shipped with polar packs. Upon receipt, store it immediately at the temperature recommended below.

**Stability & Storage** **Protect from light. Do not freeze.**

- 12 months from date of receipt, 2 to 8 °C as supplied.

## BACKGROUND

LRP-6 (Low-density lipoprotein receptor-related protein 6) is a 200-210 kDa member of the LDLR family of proteins. It is widely expressed, and serves as a coreceptor for both Wnt and parathyroid hormone. In the Wnt system, LRP-6 associates with select Fzd multipass receptors; in the PTH system, LRP-6 complexes with PTH1R. Mature human LRP-6 is a 1594 amino acid (aa) type I transmembrane glycoprotein. It contains a 1351 aa extracellular region (aa 20-1370) plus a 220 aa cytoplasmic domain (aa 1394-1613). The cytoplasmic domain contains two palmitoylation sites, one ubiquitination residue, and multiple phosphorylation motifs.