

DESCRIPTION

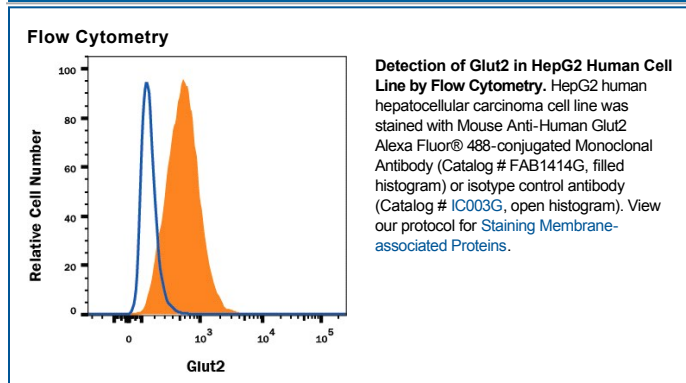
Species Reactivity	Human
Specificity	Recognizes human Glut2 expression on human Glut2-transfected NS0 cells, but not on control transfectants. Was shown to detect Glut2 on the surface of the human intestinal cell line Caco2 (2) in flow cytometry and on fixed cells in immunocytochemistry tests. Based on flow cytometric tests on transfected cells, this antibody has no cross-reactivity with human Glut1 or human Glut3.
Source	Monoclonal Mouse IgG _{2A} Clone # 199017
Purification	Protein A or G purified from hybridoma culture supernatant
Immunogen	NS0 mouse myeloma cell line transfected with human Glut2 Met1-Val524 Accession # P11168
Conjugate	Alexa Fluor 488 Excitation Wavelength: 488 nm Emission Wavelength: 515-545 nm
Formulation	Supplied in a saline solution containing BSA and Sodium Azide. See Certificate of Analysis for details. *Contains <0.1% Sodium Azide, which is not hazardous at this concentration according to GHS classifications. Refer to the Safety Data Sheet (SDS) for additional information and handling instructions.

APPLICATIONS

Please Note: Optimal dilutions should be determined by each laboratory for each application. [General Protocols](#) are available in the [Technical Information](#) section on our website.

	Recommended Concentration	Sample
Flow Cytometry	0.25-1 µg/10 ⁶ cells	See Below

DATA



PREPARATION AND STORAGE

Shipping	The product is shipped with polar packs. Upon receipt, store it immediately at the temperature recommended below.
Stability & Storage	Protect from light. Do not freeze. <ul style="list-style-type: none"> ● 12 months from date of receipt, 2 to 8 °C as supplied.

BACKGROUND

Glut2 belongs to the facilitative glucose transporter protein family that comprises 13 members. It is an integral membrane protein with 12 transmembrane domains. Glut2 is expressed predominantly in liver, intestine, kidney, and pancreatic beta-cells. It is a low-affinity glucose transporter that has been suggested to function as a glucose sensor in pancreatic beta-cells and facilitate either glucose uptake or efflux from cells depending on the nutritional state (1).

References:

1. Olson, A.L. and J.E. Pessin (1996) *Annu. Rev. Nut.* **16**:235.
2. Mahraoui, L. *et al.* (1994) *J. Biochem.* **298**:629.

Human Glut2 Alexa Fluor® 488-conjugated Antibody

Monoclonal Mouse IgG_{2A} Clone # 199017

Catalog Number: FAB1414G
100 µg

PRODUCT SPECIFIC NOTICES

This product is provided under an agreement between Life Technologies Corporation and R&D Systems, Inc, and the manufacture, use, sale or import of this product is subject to one or more US patents and corresponding non-US equivalents, owned by Life Technologies Corporation and its affiliates. The purchase of this product conveys to the buyer the non-transferable right to use the purchased amount of the product and components of the product only in research conducted by the buyer (whether the buyer is an academic or for-profit entity). The sale of this product is expressly conditioned on the buyer not using the product or its components (1) in manufacturing; (2) to provide a service, information, or data to an unaffiliated third party for payment; (3) for therapeutic, diagnostic or prophylactic purposes; (4) to resell, sell, or otherwise transfer this product or its components to any third party, or for any other commercial purpose. Life Technologies Corporation will not assert a claim against the buyer of the infringement of the above patents based on the manufacture, use or sale of a commercial product developed in research by the buyer in which this product or its components was employed, provided that neither this product nor any of its components was used in the manufacture of such product. For information on purchasing a license to this product for purposes other than research, contact Life Technologies Corporation, Cell Analysis Business Unit, Business Development, 29851 Willow Creek Road, Eugene, OR 97402, Tel: (541) 465-8300. Fax: (541) 335-0354.