

DESCRIPTION

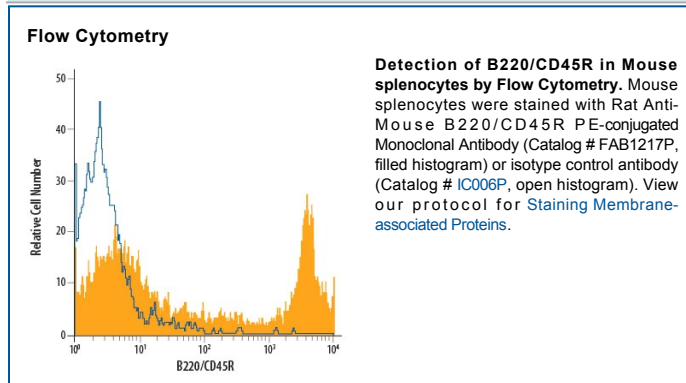
Species Reactivity	Mouse
Specificity	Detects mouse B220/CD45R.
Source	Monoclonal Rat IgG _{2A} Clone # RA3-6B2
Purification	Protein A or G purified from hybridoma culture supernatant
Immunogen	Abelson mouse leukemia virus-induced pre-B tumor cells
Conjugate	Phycoerythrin Excitation Wavelength: 488 nm Emission Wavelength: 565-605 nm
Formulation	Supplied in a saline solution containing BSA and Sodium Azide. See Certificate of Analysis for details. *Contains <0.1% Sodium Azide, which is not hazardous at this concentration according to GHS classifications. Refer to the Safety Data Sheet (SDS) for additional information and handling instructions.

APPLICATIONS

Please Note: Optimal dilutions should be determined by each laboratory for each application. *General Protocols* are available in the *Technical Information* section on our website.

	Recommended Concentration	Sample
Flow Cytometry	10 µL/10 ⁶ cells	See Below

DATA



PREPARATION AND STORAGE

Shipping	The product is shipped with polar packs. Upon receipt, store it immediately at the temperature recommended below.
Stability & Storage	Protect from light. Do not freeze. <ul style="list-style-type: none"> ● 12 months from date of receipt, 2 to 8 °C as supplied.

BACKGROUND

B220 (accession # P06800) is the mouse CD45 isoform CD45R, which is predominantly expressed on all B lymphocytes, including pro-, mature and activated B cells (1–3). The level of B220 antigen expression on the B cell lineage is developmentally regulated (2–4) and this antibody is commonly used as a B cell marker. RA3-6B2 has been reported to inhibit *in vivo* B cell responses (5, 6).

References:

1. Coffman, R.L. (1982) *Immuno. Rev.* **69**:5.
2. Hardy, R.R. *et al.* (1991) *J. Exp. Med.* **173**:1213.
3. Hathcock, K.S. *et al.* (1992) *J. Immunol.* **149**:2286.
4. Allman, D.M. *et al.* (1992) *J. Immunol.* **149**:2533.
5. Asensi, V.K. *et al.* (1989) *Immunology* **68**:204.
6. Domiati-Saad, R. *et al.* (1993) *J. Immunol.* **151**:5936.