

## DESCRIPTION

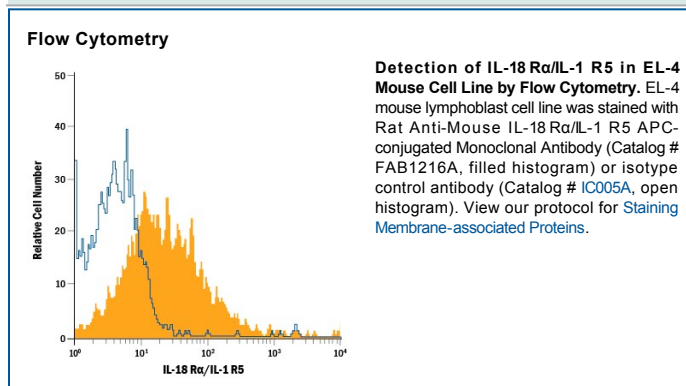
<b>Species Reactivity</b>	Mouse
<b>Specificity</b>	Detects mouse IL-18 R $\alpha$ /IL-1 R5 in direct ELISAs and Western blots. In direct ELISAs and Western blots, no cross-reactivity with recombinant mouse (rm) IL-1 R1, rmIL-1 R11, recombinant human (rh) IL-1 R3, rhIL-1 R4, recombinant rat (rr) IL-1 R6, rmIL-1 R7, rhIL-1 R8, rhIL-1 R9, or rmSIGIRR is observed.
<b>Source</b>	Monoclonal Rat IgG <sub>1</sub> Clone # 112614
<b>Purification</b>	Protein A or G purified from hybridoma culture supernatant
<b>Immunogen</b>	Mouse myeloma cell line NS0-derived recombinant mouse IL-18 R $\alpha$ /IL-1 R5 Ser19-Gly326 Accession # Q61098
<b>Conjugate</b>	Allophycocyanin Excitation Wavelength: 620-650 nm Emission Wavelength: 660-670 nm
<b>Formulation</b>	Supplied in a saline solution containing BSA and Sodium Azide. See Certificate of Analysis for details.  *Contains <0.1% Sodium Azide, which is not hazardous at this concentration according to GHS classifications. Refer to the Safety Data Sheet (SDS) for additional information and handling instructions.

## APPLICATIONS

**Please Note:** Optimal dilutions should be determined by each laboratory for each application. *General Protocols* are available in the *Technical Information* section on our website.

	<b>Recommended Concentration</b>	<b>Sample</b>
<b>Flow Cytometry</b>	10 $\mu$ L/10 <sup>6</sup> cells	See Below

## DATA



## PREPARATION AND STORAGE

**Shipping** The product is shipped with polar packs. Upon receipt, store it immediately at the temperature recommended below.

**Stability & Storage** **Protect from light. Do not freeze.**

- 12 months from date of receipt, 2 to 8 °C as supplied.

## BACKGROUND

IL-18 R, also known as IL-18 R alpha, is a member of the IL-1 receptor family and has been designated IL-1 R5.