

DESCRIPTION

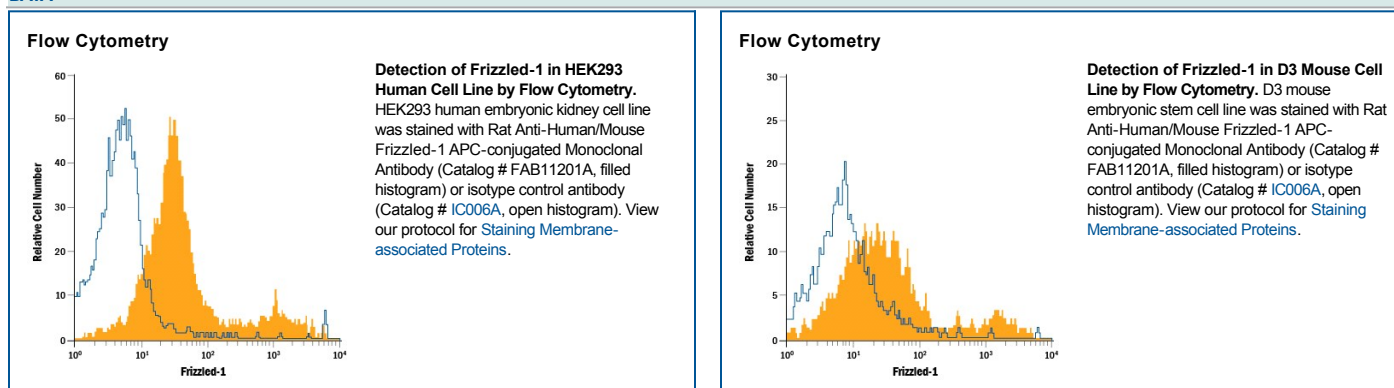
Species Reactivity	Human/Mouse
Specificity	Detects human and mouse Frizzled-1 in direct ELISAs and Western blots. In direct ELISAs, approximately 30% cross-reactivity with recombinant mouse (rm) Frizzled-9 is observed and no cross-reactivity with recombinant human (rh) Frizzled-5, rmFrizzled 2, 3, 4, 6, 7, 8, or rhMFRP is observed.
Source	Monoclonal Rat IgG _{2A} Clone # 162531
Purification	Protein A or G purified from hybridoma culture supernatant
Immunogen	Mouse myeloma cell line NS0-derived recombinant mouse Frizzled-1 Gln1-His248 (Met1122Ile) Accession # O70421
Conjugate	Allophycocyanin Excitation Wavelength: 620-650 nm Emission Wavelength: 660-670 nm
Formulation	Supplied in a saline solution containing BSA and Sodium Azide. See Certificate of Analysis for details. *Contains <0.1% Sodium Azide, which is not hazardous at this concentration according to GHS classifications. Refer to the Safety Data Sheet (SDS) for additional information and handling instructions.

APPLICATIONS

Please Note: Optimal dilutions should be determined by each laboratory for each application. *General Protocols* are available in the *Technical Information* section on our website.

	Recommended Concentration	Sample
Flow Cytometry	10 μ L/10 ⁶ cells	See Below

DATA



PREPARATION AND STORAGE

Shipping The product is shipped with polar packs. Upon receipt, store it immediately at the temperature recommended below.

Stability & Storage **Protect from light. Do not freeze.**

- 12 months from date of receipt, 2 to 8 °C as supplied.

BACKGROUND

Members of the Frizzled family of proteins serve as receptors for the Wnt signaling pathway and are involved in a variety of developmental processes. Frizzled proteins each contain a divergent N-terminal signal peptide, a highly conserved extracellular cysteine-rich domain, a variable-length linker region, a seven-pass transmembrane domain, and a variable-length C-terminal tail.