

DESCRIPTION

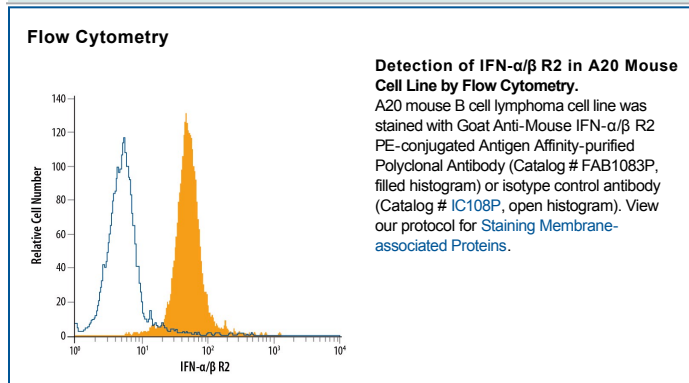
Species Reactivity	Mouse
Specificity	Detects mouse IFN- α/β R2 in direct ELISAs and Western blots. In Western blots, approximately 10% cross-reactivity with recombinant mouse (rm) IFN- γ R2 and rmlL-20 R α is observed, 5% cross-reactivity with recombinant human (rh) IL-10 R β , rmIFN- γ RI, and rhIL-20 R β is observed and less than 1% cross-reactivity with rhIFN- β R α is observed.
Source	Polyclonal Goat IgG
Purification	Antigen Affinity-purified
Immunogen	Mouse myeloma cell line NS0-derived recombinant mouse IFN- α/β R2 Ser22-Ala239 (Lys160Asn) Accession # Q9D1R7
Conjugate	Phycoerythrin Excitation Wavelength: 488 nm Emission Wavelength: 565-605 nm
Formulation	Supplied in a saline solution containing BSA and Sodium Azide. See Certificate of Analysis for details. *Contains <0.1% Sodium Azide, which is not hazardous at this concentration according to GHS classifications. Refer to the Safety Data Sheet (SDS) for additional information and handling instructions.

APPLICATIONS

Please Note: Optimal dilutions should be determined by each laboratory for each application. [General Protocols](#) are available in the [Technical Information](#) section on our website.

	Recommended Concentration	Sample
Flow Cytometry	10 μ L/10 ⁶ cells	See Below

DATA



PREPARATION AND STORAGE

Shipping	The product is shipped with polar packs. Upon receipt, store it immediately at the temperature recommended below.
Stability & Storage	Protect from light. Do not freeze. <ul style="list-style-type: none"> 12 months from date of receipt, 2 to 8 °C as supplied.

BACKGROUND

IFN- α/β R2 belongs to the type II cytokine receptor family. It complexes with IFN- α/β R1 to form the signaling receptor complex for the family of α and β IFN subtypes. By alternative splicing, IFN- α/β R2 can exist as a secreted soluble protein or as a type I membrane protein.