

DESCRIPTION

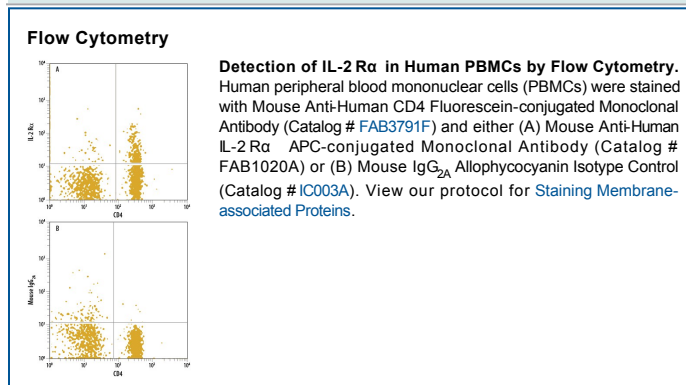
Species Reactivity	Human
Specificity	Detects human CD25/IL-2 R α in direct ELISAs and Western blots. In direct ELISAs, no cross-reactivity with recombinant human (rh) IL-2 R γ or rhIL-15 R α is observed.
Source	Monoclonal Mouse IgG _{2A} Clone # 24212
Purification	Protein A or G purified from hybridoma culture supernatant
Immunogen	<i>S. frugiperda</i> insect ovarian cell line Sf 21-derived recombinant human CD25/IL-2 R α Glu22-Cys213 Accession # P01589
Conjugate	Allophycocyanin Excitation Wavelength: 620-650 nm Emission Wavelength: 660-670 nm
Formulation	Supplied in a saline solution containing BSA and Sodium Azide. See Certificate of Analysis for details. *Contains <0.1% Sodium Azide, which is not hazardous at this concentration according to GHS classifications. Refer to the Safety Data Sheet (SDS) for additional information and handling instructions.

APPLICATIONS

Please Note: Optimal dilutions should be determined by each laboratory for each application. *General Protocols* are available in the *Technical Information* section on our website.

	Recommended Concentration	Sample
Flow Cytometry	10 μ L/10 ⁶ cells	See Below

DATA



PREPARATION AND STORAGE

Shipping The product is shipped with polar packs. Upon receipt, store it immediately at the temperature recommended below.

Stability & Storage **Protect from light. Do not freeze.**

- 12 months from date of receipt, 2 to 8 °C as supplied.

BACKGROUND

IL-2 R α , also known as CD25, is a type I transmembrane protein that associates with IL-2 R β and the common γ chain to form a high affinity heterotrimeric receptor complex for IL-2. A soluble form of IL-2 R α has been detected in serum.