

DESCRIPTION

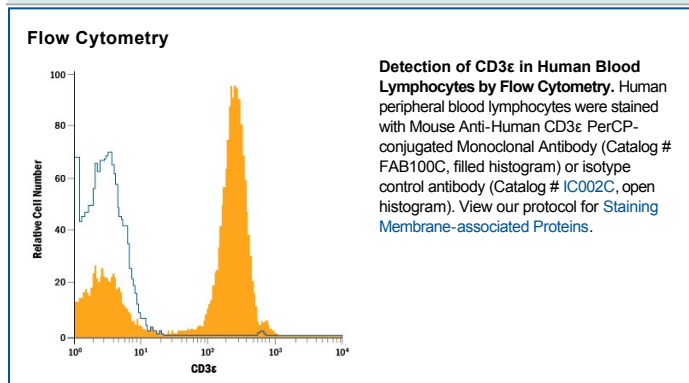
Species Reactivity	Human
Specificity	Recognizes the ε-chain of the CD3/T cell antigen receptor complex (McMichael, A.J. <i>et al.</i> (1987) Leucocyte Typing III: White Cell Differentiation Antigens, Oxford University Press, New York; Knapp, W. <i>et al.</i> (1989) Leucocyte Typing IV: White Cell Differentiation Antigens, Oxford University Press, New York; Schlossman, S. <i>et al.</i> (1995) Leucocyte Typing V: White Cell Differentiation Antigens, Oxford University Press, New York).
Source	Monoclonal Mouse IgG ₁ Clone # UCHT1
Purification	Protein A or G purified from hybridoma culture supernatant
Immunogen	Human thymocytes (1)
Conjugate	PerCP (Peridinin-chlorophyll Protein Complex) Excitation Wavelength: 482 and 564 nm Emission Wavelength: 675 nm
Formulation	Supplied in a saline solution containing BSA and Sodium Azide. See Certificate of Analysis for details. *Contains <0.1% Sodium Azide, which is not hazardous at this concentration according to GHS classifications. Refer to the Safety Data Sheet (SDS) for additional information and handling instructions.

APPLICATIONS

Please Note: Optimal dilutions should be determined by each laboratory for each application. [General Protocols](#) are available in the Technical Information section on our website.

	Recommended Concentration	Sample
Flow Cytometry	10 µL/10 ⁶ cells	See Below

DATA



PREPARATION AND STORAGE

Shipping	The product is shipped with polar packs. Upon receipt, store it immediately at the temperature recommended below.
Stability & Storage	Protect from light. Do not freeze. ● 12 months from date of receipt, 2 to 8 °C as supplied.

BACKGROUND

CD3ε is one of at least four invariant proteins that associate with the variable antigen recognition chains of the T cell receptor and function in signal transduction.

References:

1. Beverly, P.C.L. and R.E. Callard (1981) Eur. J. Immunol. **11**:329.