

# DuoSet<sup>®</sup> IC

## Human Total I $\kappa$ B- $\alpha$

Catalog Number DYC4299-2

DYC4299-5

DYC4299E

**For the development of sandwich ELISAs to measure NF $\kappa$ B inhibitor alpha (I $\kappa$ B- $\alpha$ ) in cell lysates.**

*This package insert must be read in its entirety before using this product.*

**FOR RESEARCH USE ONLY.  
NOT FOR USE IN DIAGNOSTIC PROCEDURES.**

## TABLE OF CONTENTS

Contents	Page
PRINCIPLE OF THE ASSAY	2
MATERIALS PROVIDED. ....	2
OTHER MATERIALS REQUIRED	3
SOLUTIONS REQUIRED . ....	3
REAGENT PREPARATION	4
PREPARATION OF SAMPLES. ....	4
PRECAUTION	5
TECHNICAL HINTS AND LIMITATIONS. ....	5
GENERAL ELISA PROTOCOL	6
CALCULATION OF RESULTS . ....	7
TYPICAL DATA	7
CALIBRATION. ....	7
SPECIFICITY	8
QUANTIFICATION . ....	9
PLATE LAYOUT	11

### MANUFACTURED AND DISTRIBUTED BY:

R&D Systems, Inc.  
614 McKinley Place NE  
Minneapolis, MN 55413  
United States of America

TELEPHONE: (800) 343-7475  
(612) 379-2956  
FAX: (612) 656-4400  
E-MAIL: info@RnDSystems.com

### DISTRIBUTED BY:

R&D Systems Europe, Ltd.  
19 Barton Lane  
Abingdon Science Park  
Abingdon, OX14 3NB  
United Kingdom

TELEPHONE: +44 (0)1235 529449  
FAX: +44 (0)1235 533420  
E-MAIL: info@RnDSystems.co.uk

R&D Systems China Co. Ltd.  
24A1 Hua Min Empire Plaza  
726 West Yan An Road  
Shanghai PRC 200050

TELEPHONE: +86 (21) 52380373  
FAX: +86 (21) 52371001  
E-MAIL: info@RnDSystemsChina.com.cn

## PRINCIPLE OF THE ASSAY

This DuoSet IC<sup>®</sup> ELISA contains the basic components required for the development of sandwich ELISAs to measure NF $\kappa$ B inhibitor alpha (I $\kappa$ B- $\alpha$ ) in cell lysates. An immobilized capture antibody specific for I $\kappa$ B- $\alpha$ , also known as IKBA and MAD3, binds both phosphorylated and unphosphorylated protein. After washing away unbound material, a biotinylated detection antibody specific for I $\kappa$ B- $\alpha$  is used to detect captured protein, utilizing a standard Streptavidin-HRP format.

## MATERIALS PROVIDED

**Store the unopened kit at 2-8° C. Do not use past kit expiration date.**

Description	Part #	Storage Conditions	Vials Provided	
			Cat. # DYC4299-2	Cat. # DYC4299-5
Total I $\kappa$ B- $\alpha$ Capture Antibody	843557	2-8° C	1	2
Total I $\kappa$ B- $\alpha$ Detection Antibody	843558	2-8° C	1	2
Total I $\kappa$ B- $\alpha$ Standard	843559	2-8° C	3	5
Streptavidin-HRP	890803	2-8° C	1	1

DYC4299-2 contains sufficient materials to run ELISAs on at least two 96 well plates.\*

DYC4299-5 contains sufficient materials to run ELISAs on at least five 96 well plates.\*

This kit is also available in an Economy Pack (R&D Systems, Catalog # DYC4299E).

Economy Packs contain sufficient materials to run ELISAs on 15 microplates.\*

Specific vial counts of each component may vary. Please refer to the literature accompanying your order for specific vial counts.

\*Provided the following conditions are met:

- The reagents are prepared as described in this package insert.
- The assay is run as described in the General ELISA Protocol on page 6.
- The recommended microplates, buffers, diluents, substrates, and solutions are used.

## OTHER MATERIALS REQUIRED

- Aprotinin (Sigma # A6279)
- Leupeptin (Tocris # 1167)
- Pepstatin (Tocris # 1190)
- Phenylmethylsulfonylfluoride (PMSF) (Sigma # P7626)
- Sodium Azide (NaN<sub>3</sub>) (Sigma # S2002)
- Sodium Fluoride (NaF) (Sigma # 201154)
- Sodium Orthovanadate (Na<sub>3</sub>VO<sub>4</sub>) (Sigma # S6508), activated
- Sodium Pyrophosphate (Na<sub>4</sub>P<sub>2</sub>O<sub>7</sub>) (Sigma # P8010)
- Triton™ X-100 (Sigma # T9284)
- Urea
- Pipettes and pipette tips
- Deionized or distilled water
- 96 well microplates [Costar EIA Plates (Catalog # 2592 or R&D Systems Catalog # DY990) are suggested]
- Plate sealers (R&D Systems, Catalog # DY992)
- Squirrt bottle, manifold dispenser, or automated microplate washer

## SOLUTIONS REQUIRED

**PBS** - 137 mM NaCl, 2.7 mM KCl, 8.1 mM Na<sub>2</sub>HPO<sub>4</sub>, 1.5 mM KH<sub>2</sub>PO<sub>4</sub>, pH 7.2-7.4, 0.2 μm filtered.

**Wash Buffer** - 0.05% Tween<sup>®</sup> 20 in PBS, pH 7.2-7.4 (R&D Systems, Catalog # WA126).

**Block Buffer** - 1% BSA\*, 0.05% NaN<sub>3</sub>, in PBS, pH 7.2-7.4.

**IC Diluent #1** - 1% BSA\* in PBS, pH 7.2-7.4, 0.2 μm filtered.

**IC Diluent #8\*\*** - 1 mM EDTA, 0.5% Triton X-100, 5 mM NaF in PBS, pH 7.2-7.4.

**Note:** *IC Diluent #8 is also the base diluent for IC Diluent #3, IC Diluent #7, and Lysis Buffer #6. Approximately 50 mL of this diluent is required to run the assay on one plate.*

**IC Diluent #3\*\*** - 1 mM EDTA, 0.5% Triton X-100, 5 mM NaF, 1 M urea in PBS, pH 7.2-7.4.

**IC Diluent #7\*\*** - 1 mM EDTA, 0.5% Triton X-100, 5 mM NaF, 6 M urea in PBS, pH 7.2-7.4.

**Lysis Buffer #6\*\*** - 1 mM EDTA, 0.5% Triton X-100, 5 mM NaF, 6 M urea, 1 mM activated sodium orthovanadate, 2.5 mM sodium pyrophosphate, 10 μg/mL Leupeptin, 10 μg/mL Pepstatin, 100 μM PMSF, 3 μg/mL Aprotinin in PBS, pH 7.2-7.4.

**Substrate Solution** - 1:1 mixture of Color Reagent A (H<sub>2</sub>O<sub>2</sub>) and Color Reagent B (Tetramethylbenzidine) (R&D Systems, Catalog # DY999).

**Stop Solution** - 2 N H<sub>2</sub>SO<sub>4</sub> (R&D Systems, Catalog # DY994).

\*The use of R&D Systems Reagent Diluent Concentrate 2 (Catalog # DY995) or Millipore Bovine Serum Albumin, Fraction V, Protease free (Catalog # 82-045) is recommended. All buffers containing BSA must be stored at 2-8° C.

\*\*Sample Diluent Concentrate 1 (5X) (R&D Systems, Catalog # DYC001), prepared as described in the DYC001 insert.

## REAGENT PREPARATION

Bring all reagents to room temperature before use.

**Total I $\kappa$ B- $\alpha$  Capture Antibody** (Part 843557) - Each vial contains 720  $\mu$ g/mL of mouse anti-human I $\kappa$ B- $\alpha$  antibody when reconstituted with 200  $\mu$ L of PBS. After reconstitution, store at 2-8° C for up to 30 days or aliquot and store at  $\leq$  -20° C in a manual defrost freezer or at  $\leq$  -70° C for up to 3 months.\*

**Total I $\kappa$ B- $\alpha$  Detection Antibody** (Part 843558) - Each vial contains 18  $\mu$ g/mL of biotinylated mouse anti-human I $\kappa$ B- $\alpha$  antibody when reconstituted with 1.0 mL of IC Diluent #1. After reconstitution, store at 2-8° C for up to 30 days or aliquot and store at  $\leq$  -20° C in a manual defrost freezer or at  $\leq$  -70° C for up to 3 months.\*

**Total I $\kappa$ B- $\alpha$  Standard** (Part 843559) - Each vial contains 150 ng/mL of recombinant human I $\kappa$ B- $\alpha$  when reconstituted with 500  $\mu$ L of IC Diluent #7. **Use within one hour after reconstitution. A fresh standard should be used for each assay.**

Immediately before use, an initial 6-fold dilution should be made in IC Diluent #8. Additional dilutions should be made in IC Diluent #3. A seven point standard curve using 2-fold serial dilutions and a high standard of 4000 pg/mL is recommended.

**Streptavidin-HRP** (Part 890803) - 1 mL of Streptavidin conjugated to horseradish-peroxidase. Store at 2-8° C. **DO NOT FREEZE.**

\*Provided this is within the expiration date of the kit.

## PREPARATION OF SAMPLES

**Cell Lysates** - Rinse cells two times with PBS, making sure to remove any remaining PBS after the second rinse. Solubilize cells at  $1 \times 10^7$  cells/mL in Lysis Buffer #6 and allow samples to sit on ice for 15 minutes. Assay immediately or store at  $\leq$  -70° C. Before use, centrifuge at 2000 x g for 5 minutes, and transfer the supernate to a clean test tube. Sample protein concentration may be quantified using a total protein assay. For assaying, dilute lysates 6-fold with IC Diluent #8 and make further serial dilutions in IC Diluent #3.

**Note:** *The final concentration of urea in all samples and standards should be 1 M prior to addition to the plate.*

*All trademarks and registered trademarks are the property of their respective owners.*

## **PRECAUTION**

The Stop Solution suggested for use with this kit is an acidic solution. Wear protective gloves, clothing, eye, and face protection. Wash hands thoroughly after handling.

## **TECHNICAL HINTS AND LIMITATIONS**

- This DuoSet IC ELISA should not be used beyond the expiration date on the kit label.
- Individual results may vary due to differences in technique, plasticware and water sources.
- It is important that the diluents selected for reconstitution and for dilution of the standard reflect the environment of the samples being measured. The diluents suggested in this protocol should be suitable for most cell lysates.
- The type of enzyme and substrate and the concentrations of capture/detection antibodies used can be varied to create an immunoassay with a different sensitivity and dynamic range. A basic understanding of immunoassay development is required for the successful use of these reagents in immunoassays.
- A thorough and consistent wash technique is essential for proper assay performance. Wash Buffer should be dispensed forcefully and removed completely from the wells by aspiration or decanting. Remove any remaining Wash Buffer by inverting the plate and blotting it against clean paper towels.
- Use a fresh reagent reservoir and pipette tips for each step.
- It is recommended that all standards and samples be assayed in duplicate.
- Avoid microbial contamination of reagents and buffers. This may interfere with the sensitivity of the assay. Buffers containing protein should be made under aseptic conditions and stored at 2-8° C or be prepared fresh daily.

# GENERAL ELISA PROTOCOL

A plate layout is provided to record standards and samples assayed.

## Plate Preparation

1. Dilute the Capture Antibody to the working concentration of 4.0  $\mu\text{g}/\text{mL}$  in PBS without carrier protein. Immediately coat a 96 well microplate with 100  $\mu\text{L}$  per well of the diluted Capture Antibody. Seal the plate and incubate overnight at room temperature.
2. Aspirate each well and wash with Wash Buffer, repeating the process two times for a total of 3 washes. Wash by filling each well with Wash Buffer (400  $\mu\text{L}$ ) using a squirt bottle, manifold dispenser, or autowasher. Complete removal of liquid at each step is essential for good performance. After the last wash, remove any remaining Wash Buffer by aspirating or by inverting the plate and blotting it against clean paper towels.
3. Block plates by adding 300  $\mu\text{L}$  of Block Buffer to each well. Incubate at room temperature for 1-2 hours.
4. Repeat the aspiration/wash as in step 2. The plates are now ready for sample addition.

## Assay Procedure

1. Add 100  $\mu\text{L}$  of sample or standards in IC Diluent #3 per well. Use IC Diluent #3 as the zero standard. Cover with a plate sealer and incubate 2 hours at room temperature.  
**Note:** *A seven point standard curve using 2-fold serial dilutions and a high standard of 4000 pg/mL is recommended.*
2. Repeat the aspiration/wash as in step 2 of Plate Preparation.
3. Dilute the Detection Antibody to a working concentration of 500 ng/mL in IC Diluent #1 immediately before use. Add 100  $\mu\text{L}$  of the diluted Detection Antibody to each well. Cover with a new plate sealer and incubate 2 hours at room temperature.
4. Repeat the aspiration/wash as in step 2 of Plate Preparation.
5. Immediately before use, dilute the Streptavidin-HRP to the working concentration specified on the vial label using IC Diluent #1. Add 100  $\mu\text{L}$  of the diluted Streptavidin-HRP to each well. Incubate for 20 minutes at room temperature. Avoid placing the plate in direct light.
6. Repeat the aspiration/wash as in step 2 of Plate Preparation.
7. Add 100  $\mu\text{L}$  of Substrate Solution to each well. Incubate for 20 minutes at room temperature. Avoid placing the plate in direct light.
8. Add 50  $\mu\text{L}$  of Stop Solution to each well. Gently tap the plate to ensure thorough mixing.
9. Determine the optical density of each well immediately, using a microplate reader set to 450 nm. If wavelength correction is available, set to 540 nm or 570 nm. If wavelength correction is not available, subtract readings at 540 nm or 570 nm from the readings at 450 nm. This subtraction will correct for optical imperfections in the plate. Readings made directly at 450 nm without correction may be higher and less accurate.

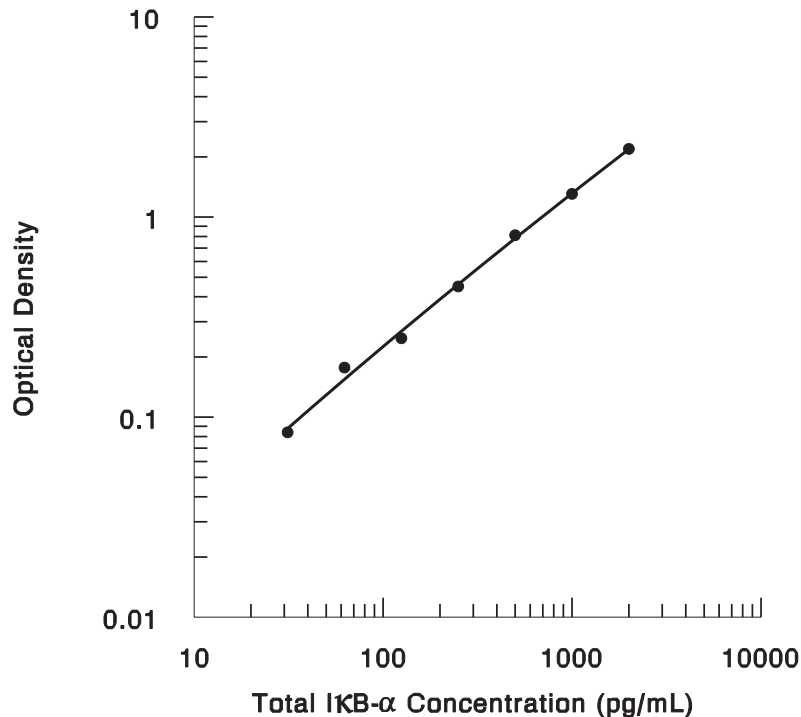
## CALCULATION OF RESULTS

Average the duplicate readings for each standard and sample, then subtract the average zero standard optical density. Results may be normalized to total protein or cell number.

Create a standard curve by reducing the data using computer software capable of generating a four parameter logistic (4-PL) curve-fit. As an alternative, construct a standard curve by plotting the mean absorbance for each standard on the y-axis against the concentration on the x-axis and draw a best fit curve through the points on the graph. The data may be linearized by plotting the log of the I $\kappa$ B- $\alpha$  concentrations versus the log of the O.D. and the best fit line can be determined by regression analysis. This procedure will produce an adequate but less precise fit of the data.

## TYPICAL DATA

A standard curve should be generated for each set of samples assayed. The graph below represents typical data generated when using the Human Total I $\kappa$ B- $\alpha$  DuoSet IC ELISA. The standard curve was calculated using a computer generated 4-PL curve-fit. This standard curve is for demonstration purposes only.



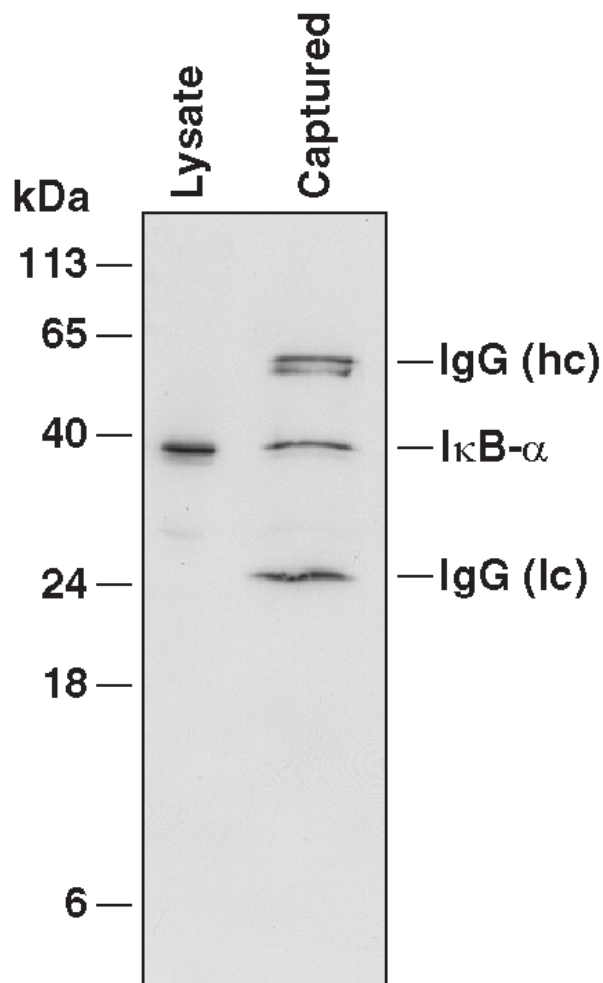
## CALIBRATION

The Human Total I $\kappa$ B- $\alpha$  DuoSet IC ELISA is calibrated against a highly purified *E. coli*-expressed recombinant human I $\kappa$ B- $\alpha$  produced at R&D Systems. Samples containing natural I $\kappa$ B- $\alpha$  showed linear dilution parallel to the standard curve obtained using the Total I $\kappa$ B- $\alpha$  Standard. These results indicate that O.D. values from this DuoSet IC ELISA can be used to determine the concentration of I $\kappa$ B- $\alpha$  in natural samples.



## SPECIFICITY

The Human Total I $\kappa$ B- $\alpha$  DuoSet IC ELISA specifically recognizes I $\kappa$ B- $\alpha$ . Specificity was demonstrated by Western blot analysis of the protein bound by the capture antibody supplied in the kit.

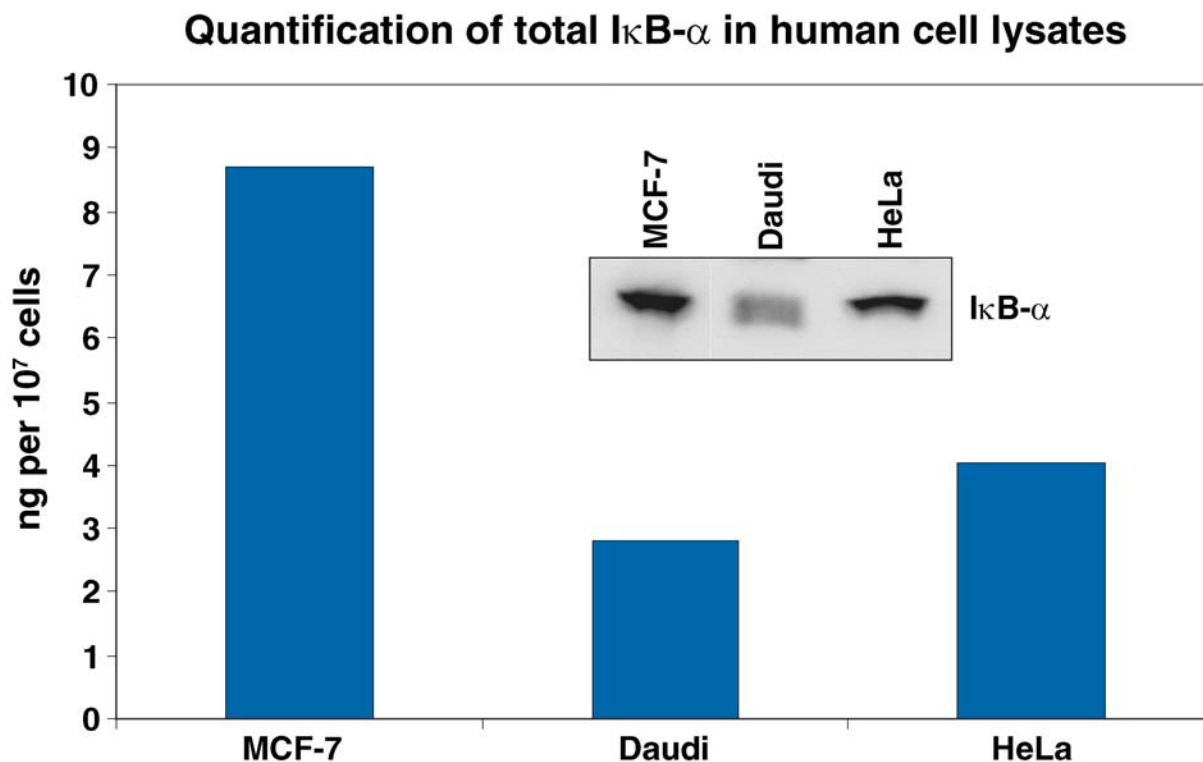


**Figure 1:** Lysate prepared from MCF-7 human breast cancer cells was incubated in wells coated with Total I $\kappa$ B- $\alpha$  Capture Antibody. Unbound material was removed by washing and bound material was solubilized in SDS gel sample buffer. The same lysate and captured proteins were resolved by SDS-PAGE, transferred to a PVDF membrane, and immunoblotted with Total I $\kappa$ B- $\alpha$  Detection Antibody. In addition to IgG heavy and light chains, only a single band at 39 kDa corresponding to I $\kappa$ B- $\alpha$  was detected in captured material, indicating that the ELISA is specific for I $\kappa$ B- $\alpha$ .

Specificity was further demonstrated using cross-reactivity experiments with related I $\kappa$ B family members. Recombinant human (rh) I $\kappa$ B- $\beta$  and rhI $\kappa$ B- $\epsilon$  were tested at 50 ng/mL and did not cross-react or interfere in the assay.

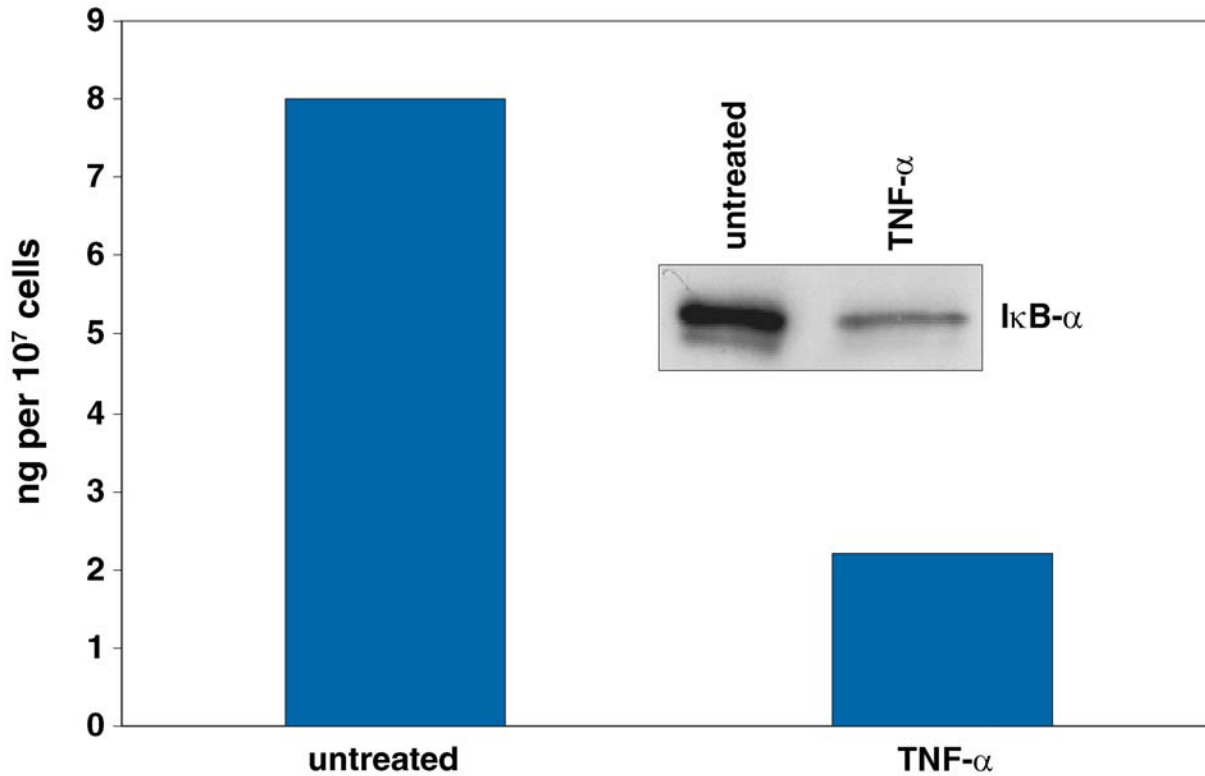
## QUANTIFICATION

Amounts of  $\text{I}\kappa\text{B}\alpha$ , as quantified by the Human Total  $\text{I}\kappa\text{B}\alpha$  DuoSet IC ELISA, are consistent with the relative amounts of  $\text{I}\kappa\text{B}\alpha$  determined by qualitative Western blot analysis.



**Figure 2:** Lysates prepared from MCF-7 human breast cancer, Daudi human Burkitt's lymphoma, and HeLa human cervical epithelial carcinoma cells were quantified with this DuoSet IC ELISA. The same lysates were also immunoblotted (inset) with anti- $\text{I}\kappa\text{B}\alpha$  monoclonal antibody (R&D Systems, Catalog # MAB4299). The DuoSet IC ELISA results correlate well with the relative amounts of  $\text{I}\kappa\text{B}\alpha$  detected by Western blot.

### Quantification of total I $\kappa$ B- $\alpha$ in TNF- $\alpha$ treated HeLa cell lysates



**Figure 3:** Lysates prepared from HeLa human cervical epithelial carcinoma cells either untreated or treated with 20 ng/mL of recombinant human TNF- $\alpha$  (R&D Systems, Catalog # 210-TA) for 20 minutes were quantified with this DuoSet IC ELISA. The same lysates were also immunoblotted (inset) with anti-I $\kappa$ B- $\alpha$  monoclonal antibody. The DuoSet IC ELISA results correlate well with the relative amounts of I $\kappa$ B- $\alpha$  detected by Western blot.

# PLATE LAYOUT

Use this plate layout as a record of standards and samples assayed.

1								
2								
3								
4								
5								
6								
7								
8								
9								
10								
11								
12								
	A	B	C	D	E	F	G	H

© 2012 R&D Systems, Inc.