

DuoSet[®] IC

Human Total PDGF R α

Catalog Number DYC322-2

DYC322-5

For the development of sandwich ELISAs to measure Platelet-derived Growth Factor Receptor Alpha (PDGF R α) in cell lysates.

This package insert must be read in its entirety before using this product.

**FOR RESEARCH USE ONLY.
NOT FOR USE IN DIAGNOSTIC PROCEDURES.**

TABLE OF CONTENTS

| Contents | Page |
|---------------------------------------|------|
| PRINCIPLE OF THE ASSAY | 2 |
| MATERIALS PROVIDED. | 2 |
| OTHER MATERIALS REQUIRED | 3 |
| SOLUTIONS REQUIRED | 3 |
| REAGENT PREPARATION | 4 |
| PREPARATION OF SAMPLES. | 4 |
| PRECAUTION | 5 |
| TECHNICAL HINTS AND LIMITATIONS. | 5 |
| GENERAL ELISA PROTOCOL | 6 |
| CALCULATION OF RESULTS | 7 |
| TYPICAL DATA | 7 |
| CALIBRATION. | 7 |
| SENSITIVITY | 8 |
| SPECIFICITY | 8 |
| QUANTIFICATION | 9 |
| PLATE LAYOUT | 10 |

MANUFACTURED AND DISTRIBUTED BY:

| | | |
|--------------------------|------------|---------------------|
| R&D Systems, Inc. | TELEPHONE: | (800) 343-7475 |
| 614 McKinley Place NE | | (612) 379-2956 |
| Minneapolis, MN 55413 | FAX: | (612) 656-4400 |
| United States of America | E-MAIL: | info@RnDSystems.com |

DISTRIBUTED BY:

| | | |
|--------------------------|------------|-----------------------|
| R&D Systems Europe, Ltd. | TELEPHONE: | +44 (0)1235 529449 |
| 19 Barton Lane | FAX: | +44 (0)1235 533420 |
| Abingdon Science Park | E-MAIL: | info@RnDSystems.co.uk |
| Abingdon, OX14 3NB | | |
| United Kingdom | | |

| | | |
|----------------------------|------------|-----------------------------|
| R&D Systems China Co. Ltd. | TELEPHONE: | +86 (21) 52380373 |
| 24A1 Hua Min Empire Plaza | FAX: | +86 (21) 52371001 |
| 726 West Yan An Road | E-MAIL: | info@RnDSystemsChina.com.cn |
| Shanghai PRC 200050 | | |

PRINCIPLE OF THE ASSAY

This DuoSet IC ELISA contains the basic components required for the development of sandwich ELISAs to measure Platelet-derived Growth Factor Receptor Alpha (PDGF R α) in cell lysates. An immobilized capture antibody specific for PDGF R α binds both tyrosine-phosphorylated and unphosphorylated PDGF R α . After washing away unbound material, a biotinylated detection antibody specific for PDGF R α is used to detect captured receptor, utilizing a standard Streptavidin-HRP format.

MATERIALS PROVIDED

Store the unopened kit at 2 - 8° C. Do not use past kit expiration date.

| Description | Part # | Storage Conditions | Vials Provided | |
|---|--------|--------------------|--------------------|--------------------|
| | | | Cat. # DYC322-2 | Cat. # DYC322-5 |
| Total PDGF R α Capture Antibody | 841603 | 2 - 8° C | 1 | 2 |
| Total PDGF R α Detection Antibody | 841604 | 2 - 8° C | 1 | 2 |
| Total PDGF R α Standard | 841605 | 2 - 8° C | 3 | 5 |
| Streptavidin-HRP | 890803 | 2 - 8° C | 1 | 1 |

DYC322-2 contains sufficient materials to run ELISAs on at least two 96 well plates.*

DYC322-5 contains sufficient materials to run ELISAs on at least five 96 well plates.*

*Provided the following conditions are met:

- The reagents are prepared as described in this package insert.
- The assay is run as described in the General ELISA Protocol on page 6.
- The recommended microplates, buffers, diluents, substrates, and solutions are used.

OTHER MATERIALS REQUIRED

- Aprotinin (Sigma # A6279)
- Leupeptin (Sigma # L8511)
- NP-40 Alternative (EMD/Calbiochem # 492016)
- Sodium azide (NaN₃) (Sigma # S2002)
- Sodium orthovanadate (Na₃VO₄) (Sigma # S6508), activated
- Pipettes and pipette tips
- Deionized or distilled water
- 96 well microplates [Costar EIA Plates (Catalog # 2592 or R&D Systems Catalog # DY990) are suggested]
- Plate sealers (R&D Systems, Catalog # DY992)
- Squirt bottle, manifold dispenser, or automated microplate washer

SOLUTIONS REQUIRED

PBS - 137 mM NaCl, 2.7 mM KCl, 8.1 mM Na₂HPO₄, 1.5 mM KH₂PO₄, pH 7.2 - 7.4, 0.2 μm filtered.

Wash Buffer - 0.05% Tween[®] 20 in PBS, pH 7.2 - 7.4 (R&D Systems, Catalog # WA126).

Block Buffer - 1% BSA*, 0.05% NaN₃ in PBS, pH 7.2 - 7.4.

IC Diluent #12** - 1% NP-40 Alternative, 20 mM Tris (pH 8.0), 137 mM NaCl, 10% glycerol, 2 mM EDTA, 1 mM activated sodium orthovanadate.

IC Diluent #14 - 20 mM Tris, 137 mM NaCl, 0.05% Tween 20, 0.1% BSA*, pH 7.2 - 7.4.

Lysis Buffer #9** - 1% NP-40 Alternative, 20 mM Tris (pH 8.0), 137 mM NaCl, 10% glycerol, 2 mM EDTA, 1 mM activated sodium orthovanadate, 10 μg/mL Aprotinin, 10 μg/mL Leupeptin.

Note: *Lysis Buffer #9 consists of IC Diluent #12 plus 10 μg/mL Aprotinin and 10 μg/mL Leupeptin. Approximately 50 mL of IC Diluent # 12 is required to run the assay on one plate.*

Substrate Solution - 1:1 mixture of Color Reagent A (H₂O₂) and Color Reagent B (Tetramethylbenzidine) (R&D Systems, Catalog # DY999).

Stop Solution - 2 N H₂SO₄ (R&D Systems, Catalog # DY994).

*The use of R&D Systems Reagent Diluent Concentrate 2 (Catalog # DY995) or Millipore Bovine Serum Albumin, Fraction V, Protease free (Catalog # 82-045) is recommended. All buffers containing BSA must be stored at 2 - 8° C.

**Sample Diluent Concentrate 2 (2X) (R&D Systems, Catalog # DYC002), prepared as described in the DYC002 insert.

Tween is a registered trademark of ICI Americas.

REAGENT PREPARATION

Bring all reagents to room temperature before use.

Total PDGF R α Capture Antibody (Part 841603) - Each vial contains 720 $\mu\text{g/mL}$ of mouse anti-human PDGF R α antibody when reconstituted with 200 μL of PBS. After reconstitution, store at 2 - 8° C for up to 30 days or aliquot and store at $\leq -20^\circ\text{C}$ in a manual defrost freezer or at $\leq -70^\circ\text{C}$ for up to 3 months.*

Total PDGF R α Detection Antibody (Part 841604) - Each vial contains 18 $\mu\text{g/mL}$ of biotinylated mouse anti-human PDGF R α antibody when reconstituted with 1.0 mL of IC Diluent #14. After reconstitution, store at 2 - 8° C for up to 30 days or aliquot and store at $\leq -20^\circ\text{C}$ in a manual defrost freezer or at $\leq -70^\circ\text{C}$ for up to 3 months.*

Total PDGF R α Standard (Part 841605) - Each vial contains 120 ng/mL of recombinant human PDGF R α when reconstituted with 500 μL of IC Diluent #12. **Use within one hour of reconstitution. Use a fresh standard for each assay.** A seven point standard curve using 2-fold serial dilutions and a high standard of 20,000 pg/mL is recommended.

Streptavidin-HRP (Part 890803) - 1 mL of Streptavidin conjugated to horseradish-peroxidase. Store at 2 - 8° C. **DO NOT FREEZE.**

*Provided this is within the expiration date of the kit.

PREPARATION OF SAMPLES

Cell Lysates - Rinse cells two times with PBS, making sure to remove any remaining PBS after the second rinse. Solubilize cells at 1×10^7 cells/mL in Lysis Buffer #9 and allow samples to sit on ice for 15 minutes. Assay immediately or store at $\leq -70^\circ\text{C}$. Before use, centrifuge samples at 2000 x g for 5 minutes and transfer the supernate into a clean test tube. Sample protein concentrations may be quantified using a total protein assay. If needed, further dilutions should be made in IC Diluent #12.

PRECAUTION

The Stop Solution suggested for use with this kit is an acidic solution. Wear eye, hand, face, and clothing protection when using this material.

TECHNICAL HINTS AND LIMITATIONS

- This DuoSet IC ELISA should not be used beyond the expiration date on the kit label.
- Individual results may vary due to differences in technique, plasticware and water sources.
- It is important that the diluents selected for reconstitution and for dilution of the standard reflect the environment of the samples being measured. The diluents suggested in this protocol should be suitable for most cell lysates.
- The type of enzyme and substrate and the concentrations of capture/detection antibodies used can be varied to create an immunoassay with a different sensitivity and dynamic range. A basic understanding of immunoassay development is required for the successful use of these reagents in immunoassays.
- A thorough and consistent wash technique is essential for proper assay performance. Wash Buffer should be dispensed forcefully and removed completely from the wells by aspiration or decanting. Remove any remaining Wash Buffer by inverting the plate and blotting it against clean paper towels.
- Use a fresh reagent reservoir and pipette tips for each step.
- It is recommended that all standards and samples be assayed in duplicate.
- Avoid microbial contamination of reagents and buffers. This may interfere with the sensitivity of the assay. Buffers containing protein should be made under aseptic conditions and stored at 2 - 8° C or be prepared fresh daily.

GENERAL ELISA PROTOCOL

A plate layout is provided to record standards and samples assayed.

Plate Preparation

1. Dilute the Capture Antibody to the working concentration of 4.0 $\mu\text{g}/\text{mL}$ in PBS without carrier protein. Immediately coat a 96 well microplate with 100 μL per well of the diluted Capture Antibody. Seal the plate and incubate overnight at room temperature.
2. Aspirate each well and wash with Wash Buffer, repeating the process two times for a total of 3 washes. Wash by filling each well with Wash Buffer (400 μL) using a squirt bottle, manifold dispenser, or autowasher. Complete removal of liquid at each step is essential for good performance. After the last wash, remove any remaining Wash Buffer by aspirating or by inverting the plate and blotting it against clean paper towels.
3. Block plates by adding 300 μL of Block Buffer to each well. Incubate at room temperature for 1 - 2 hours.
4. Repeat the aspiration/wash as in step 2. The plates are now ready for sample addition.

Assay Procedure

1. Add 100 μL of sample or standards in IC Diluent #12 per well. Use IC Diluent #12 as the zero standard. Cover with a plate sealer and incubate 2 hours at room temperature.
Note: *A seven point standard curve using 2-fold serial dilutions and a high standard of 20,000 pg/mL is recommended.*
2. Repeat the aspiration/wash as in step 2 of Plate Preparation.
3. Dilute the Detection Antibody to a working concentration of 500 ng/mL in IC Diluent #14 before use. Prepare only as much Detection Antibody as required to run each assay. Add 100 μL of the diluted Detection Antibody to each well. Cover with a new plate sealer and incubate 2 hours at room temperature.
4. Repeat the aspiration/wash as in step 2 of Plate Preparation.
5. Immediately before use, dilute the Streptavidin-HRP to the working concentration specified on the vial label using IC Diluent #14. Prepare only as much Streptavidin-HRP as required to run each assay. Add 100 μL of the diluted Streptavidin-HRP to each well. Incubate for 20 minutes at room temperature. Avoid placing the plate in direct light.
6. Repeat the aspiration/wash as in step 2 of Plate Preparation.
7. Add 100 μL of Substrate Solution to each well. Incubate for 20 minutes at room temperature. Avoid placing the plate in direct light.
8. Add 50 μL of Stop Solution to each well. Gently tap the plate to ensure thorough mixing.
9. Determine the optical density of each well immediately, using a microplate reader set to 450 nm. If wavelength correction is available, set to 540 nm or 570 nm. If wavelength correction is not available, subtract readings at 540 nm or 570 nm from the readings at 450 nm. This subtraction will correct for optical imperfections in the plate. Readings made directly at 450 nm without correction may be higher and less accurate.

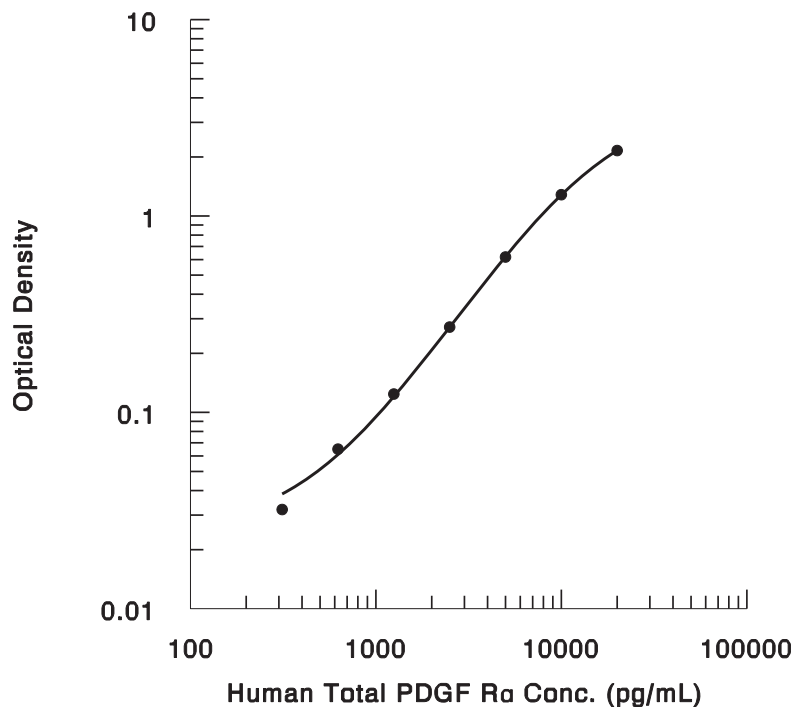
CALCULATION OF RESULTS

Average the duplicate readings for each standard and sample, then subtract the average zero standard optical density.

Create a standard curve by reducing the data using computer software capable of generating a four parameter logistic (4-PL) curve-fit. As an alternative, construct a standard curve by plotting the mean absorbance for each standard on the y-axis against the concentration on the x-axis and draw a best fit curve through the points on the graph. The data may be linearized by plotting the log of the PDGF R α concentrations versus the log of the O.D. and the best fit line can be determined by regression analysis. This procedure will produce an adequate but less precise fit of the data.

TYPICAL DATA

A standard curve should be generated for each set of samples assayed. The graph below represents typical data generated when using the Human Total PDGF R α DuoSet IC ELISA. The standard curve was calculated using a computer generated 4-PL curve-fit. This standard curve is for demonstration purposes only.



CALIBRATION

This DuoSet IC ELISA is calibrated against a highly purified NS0-expressed recombinant human PDGF sR α produced at R&D Systems.

SENSITIVITY

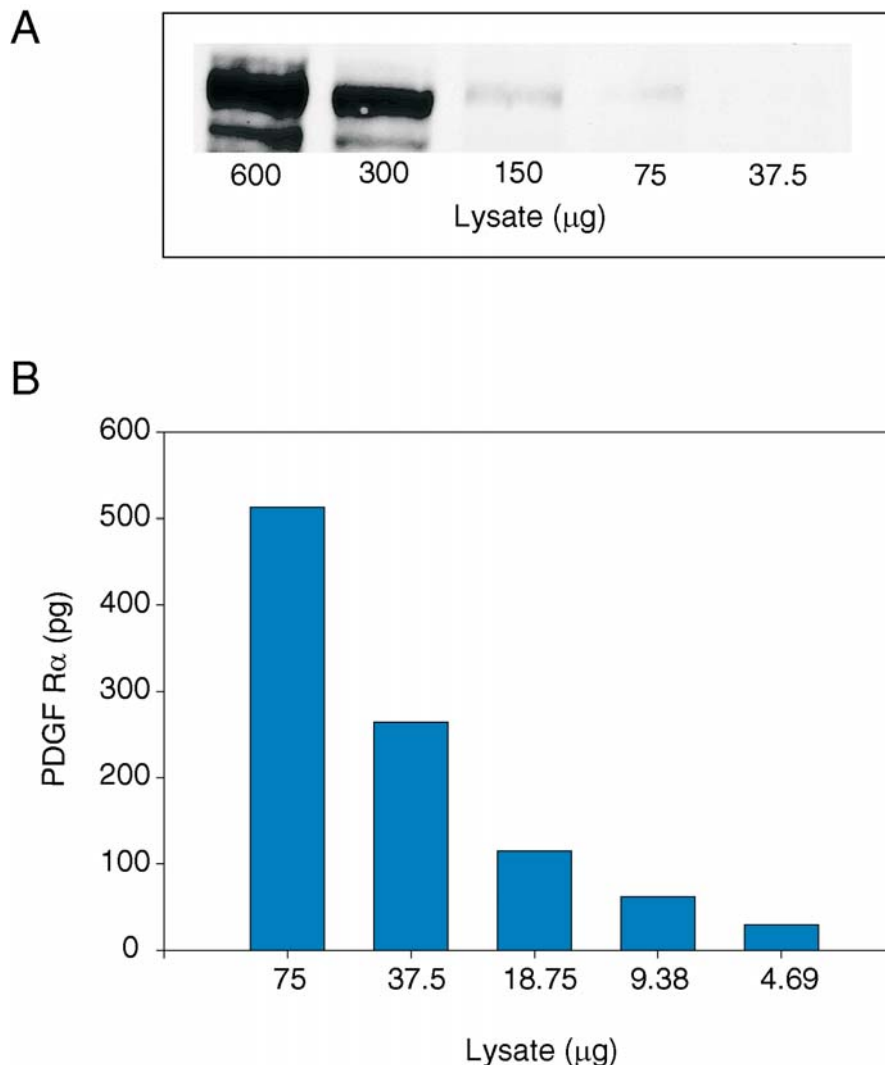


Figure 1: The Human Total PDGF R α DuoSet IC ELISA is more sensitive than immunoprecipitation (IP)-Western blot analysis. Lysates prepared from the human immortalized fibroblast cell line CCD-1070-SK were diluted in series and analyzed by **(A)** IP-Western blot and **(B)** this DuoSet IC ELISA. IPs were performed using an anti-PDGF R α monoclonal antibody and goat anti-mouse agarose. Immunoblots were incubated with a biotinylated anti-PDGF R α polyclonal antibody (R&D Systems, Catalog # BAF322) to detect total PDGF R α . Bands were visualized with Streptavidin-HRP (R&D Systems, Catalog # DY998) followed by chemiluminescent detection. Human PDGF R α can be detected by the Human Total PDGF R α DuoSet IC ELISA by using approximately 8 to 10 times less lysate than is needed for a conventional IP-Western blot.

SPECIFICITY

To determine specificity, recombinant human PDGF R β /Fc Chimera, recombinant human M-CSF R/Fc Chimera, and recombinant human SCF R were assayed at 200 ng/mL and did not cross-react or interfere in the assay.

QUANTIFICATION

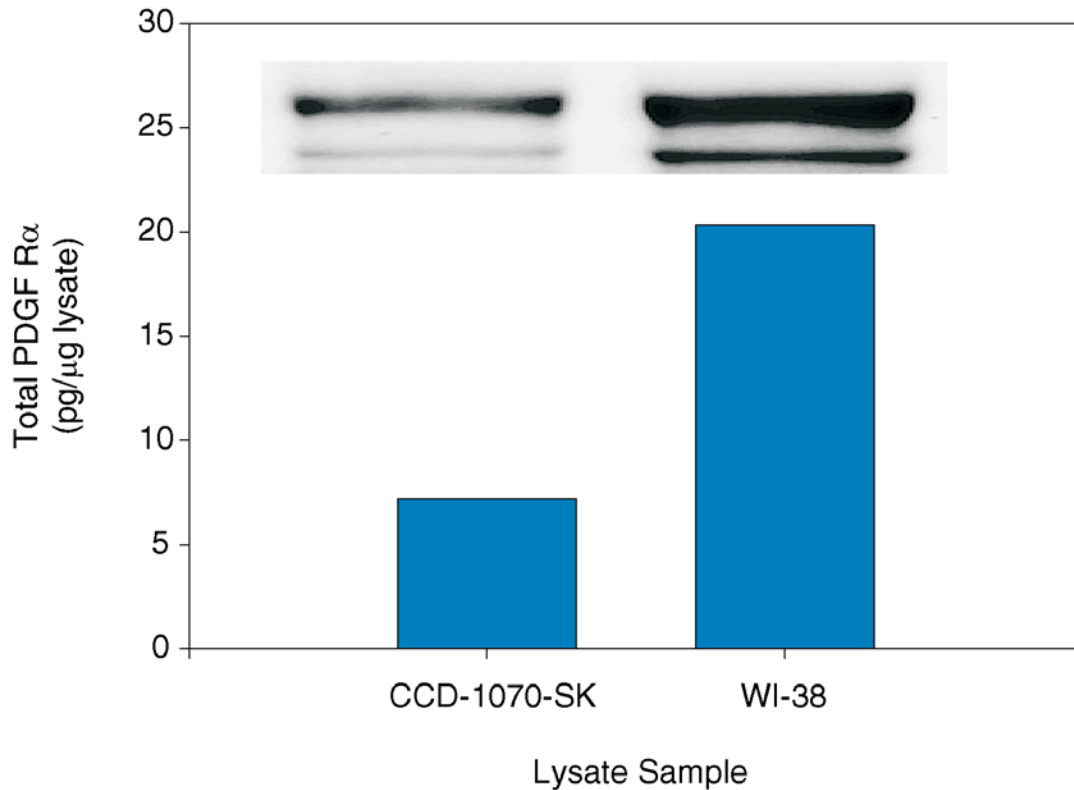


Figure 2: The Human Total PDGF R α DuoSet IC ELISA measures the relative level of PDGF R α . Lysates were prepared from CCD-1070-SK cells and the human lung fibroblast cell line (WI-38). ELISA and IP-Western blot (inset) analyses were performed using 100 μ g and 800 μ g of lysate, respectively. The IP-Western blot was performed as described in Figure 1.

PLATE LAYOUT

Use this plate layout as a record of standards and samples assayed.

| | | | | | | | | |
|----|---|---|---|---|---|---|---|---|
| 1 | | | | | | | | |
| 2 | | | | | | | | |
| 3 | | | | | | | | |
| 4 | | | | | | | | |
| 5 | | | | | | | | |
| 6 | | | | | | | | |
| 7 | | | | | | | | |
| 8 | | | | | | | | |
| 9 | | | | | | | | |
| 10 | | | | | | | | |
| 11 | | | | | | | | |
| 12 | | | | | | | | |
| | A | B | C | D | E | F | G | H |

NOTES