

DuoSet[®] IC

Human Phospho-IGF-I R

Catalog Number DYC1770-2

DYC1770-5

DYC1770E

For the development of sandwich ELISAs to measure phosphorylated Insulin-like Growth Factor I Receptor (IGF-I R) in cell lysates.

This package insert must be read in its entirety before using this product.

**FOR RESEARCH USE ONLY.
NOT FOR USE IN DIAGNOSTIC PROCEDURES.**

TABLE OF CONTENTS

Contents	Page
PRINCIPLE OF THE ASSAY	2
MATERIALS PROVIDED.	2
OTHER MATERIALS REQUIRED	3
SOLUTIONS REQUIRED	3
REAGENT PREPARATION	4
PREPARATION OF SAMPLES.	4
PRECAUTION	5
TECHNICAL HINTS AND LIMITATIONS.	5
GENERAL ELISA PROTOCOL	6
CALCULATION OF RESULTS	7
SENSITIVITY	7
LIGAND-INDUCED PHOSPHORYLATION.	8
SPECIFICITY	9
PLATE LAYOUT	10

MANUFACTURED AND DISTRIBUTED BY:

R&D Systems, Inc.
614 McKinley Place NE
Minneapolis, MN 55413
United States of America

TELEPHONE: (800) 343-7475
(612) 379-2956
FAX: (612) 656-4400
E-MAIL: info@RnDSystems.com

DISTRIBUTED BY:

R&D Systems Europe, Ltd.
19 Barton Lane
Abingdon Science Park
Abingdon, OX14 3NB
United Kingdom

TELEPHONE: +44 (0)1235 529449
FAX: +44 (0)1235 533420
E-MAIL: info@RnDSystems.co.uk

R&D Systems China Co. Ltd.
24A1 Hua Min Empire Plaza
726 West Yan An Road
Shanghai PRC 200050

TELEPHONE: +86 (21) 52380373
FAX: +86 (21) 52371001
E-MAIL: info@RnDSystemsChina.com.cn

PRINCIPLE OF THE ASSAY

This DuoSet[®] IC ELISA contains the basic components required for the development of sandwich ELISAs to measure tyrosine-phosphorylated insulin-like growth factor I receptor (IGF-I R) in cell lysates. An immobilized capture antibody specific for human IGF-I R binds both phosphorylated and unphosphorylated IGF-I R. After washing away unbound material, an HRP-conjugated detection antibody specific for phosphorylated tyrosine is used to detect only phosphorylated receptor, utilizing a standard HRP format.

MATERIALS PROVIDED

Store the unopened kit at 2-8° C. Do not use past kit expiration date.

Description	Part #	Storage Conditions	Vials Provided	
			Cat. # DYC1770-2	Cat. # DYC1770-5
Human Phospho-IGF-I R Capture Antibody	841431	2-8° C	1	2
Anti-Phospho-tyrosine-HRP	841403	2-8° C	1	2
Human Phospho-IGF-I R Control	841433	2-8° C	3	5

DYC1770-2 contains sufficient materials to run ELISAs on at least two 96 well plates.*
DYC1770-5 contains sufficient materials to run ELISAs on at least five 96 well plates.*

This kit is also available in an Economy Pack (R&D Systems, Catalog # DYC1770E). Economy Packs contain sufficient materials to run ELISAs on 15 microplates.* Specific vial counts of each component may vary. Please refer to the literature accompanying your order for specific vial counts.

*Provided the following conditions are met:

- The reagents are prepared as described in this package insert.
- The assay is run as described in the General ELISA Protocol on page 6.
- The recommended microplates, buffers, diluents, substrates, and solutions are used.

OTHER MATERIALS REQUIRED

- Aprotinin (Sigma # A6279)
- Leupeptin (Tocris # 1167)
- NP-40 Alternative (EMD/Calbiochem # 492016)
- Sodium azide (NaN₃) (Sigma # S2002)
- Sodium orthovanadate (Na₃VO₄) (Sigma # S6508), activated
- Pipettes and pipette tips
- Deionized or distilled water
- 96 well microplates (R&D Systems, Catalog # DY990)
- Plate sealers (R&D Systems, Catalog # DY992)
- Squirt bottle, manifold dispenser, or automated microplate washer.

SOLUTIONS REQUIRED

PBS - 137 mM NaCl, 2.7 mM KCl, 8.1 mM Na₂HPO₄, 1.5 mM KH₂PO₄, pH 7.2-7.4, 0.2 µm filtered (R&D Systems, Catalog # DY006).

Wash Buffer - 0.05% Tween[®] 20 in PBS, pH 7.2-7.4 (R&D Systems, Catalog # WA126).

Block Buffer - 1% BSA*, 0.05% NaN₃ in PBS, pH 7.2-7.4.

IC Diluent #12** - 1% NP-40 Alternative, 20 mM Tris (pH 8.0), 137 mM NaCl, 10% glycerol, 2 mM EDTA, 1 mM activated sodium orthovanadate.

IC Diluent #14 - 20 mM Tris, 137 mM NaCl, 0.05% Tween[®] 20, 0.1% BSA*, pH 7.2-7.4 (R&D Systems, Catalog # DY995).

Lysis Buffer #9** - 1% NP-40 Alternative, 20 mM Tris (pH 8.0), 137 mM NaCl, 10% glycerol, 2 mM EDTA, 1 mM activated sodium orthovanadate, 10 µg/mL Aprotinin, 10 µg/mL Leupeptin.

Note: *Lysis Buffer #9 consists of IC Diluent #12 plus 10 µg/mL Aprotinin and 10 µg/mL Leupeptin. Approximately 50 mL of IC Diluent #12 is required to run the assay on one plate.*

Substrate Solution - 1:1 mixture of Color Reagent A (H₂O₂) and Color Reagent B (Tetramethylbenzidine) (R&D Systems, Catalog # DY999).

Stop Solution - 2 N H₂SO₄ (R&D Systems, Catalog # DY994).

*The use of R&D Systems Reagent Diluent Concentrate 2 (Catalog # DY995) or Millipore Bovine Serum Albumin, Fraction V, Protease free (Catalog # 82-045) is recommended. All buffers containing BSA must be stored at 2-8° C.

**Sample Diluent Concentrate 2 (2X) (R&D Systems, Catalog # DYC002), prepared as described in the DYC002 insert.

REAGENT PREPARATION

Bring all reagents to room temperature before use.

Human Phospho-IGF-I R Capture Antibody (Part 841431) - Each vial contains 1440 µg/mL of mouse anti-human IGF-I R antibody when reconstituted with 200 µL of PBS. After reconstitution, store at 2-8° C for up to 30 days or aliquot and store at ≤ -20° C in a manual defrost freezer or at ≤ -70° C for up to 3 months.*

Anti-Phospho-tyrosine-HRP (Part 841403) - Immediately before use, dilute the Anti-Phospho-tyrosine-HRP to the working concentration specified on the vial label in IC Diluent #14. Each vial contains 50 µL of mouse anti-phospho-tyrosine antibody conjugated to HRP. Store at 2-8° C for up to 3 months after initial use.* **DO NOT FREEZE.**

Human Phospho-IGF-I R Control (Part 841433) - Each vial contains 100 ng/mL of recombinant human phosphorylated IGF-I R when reconstituted with 500 µL of IC Diluent #12. **Use within one hour of reconstitution. Use a fresh control for each assay.** A control concentration of 40 ng/mL is recommended.

*Provided this is within the expiration date of the kit.

PREPARATION OF SAMPLES

Cell Lysates - Rinse cells two times with PBS, making sure to remove any remaining PBS after the second rinse. Solubilize cells at 1×10^7 cells/mL in Lysis Buffer #9 and allow samples to sit on ice for 15 minutes. Assay immediately or store at ≤ -70° C. Before use, centrifuge samples at 2000 x g for 5 minutes and transfer the supernate to a clean test tube. Sample protein concentration may be quantified using a total protein assay. If needed, further dilutions should be made in IC Diluent #12.

PRECAUTIONS

The Stop Solution suggested for use with this kit is an acid solution.

Some components in this kit contain ProClin[®] which may cause an allergic skin reaction. Avoid breathing mist.

Wear protective gloves, clothing, eye, and face protection. Wash hands thoroughly after handling. Please refer to the MSDS on our website prior to use.

TECHNICAL HINTS AND LIMITATIONS

- This DuoSet IC ELISA should not be used beyond the expiration date on the kit label.
- Individual results may vary due to differences in technique, plasticware and water sources.
- It is important that the diluents selected for reconstitution and for dilution of the sample and control reflect the environment of the samples being measured. The diluent suggested in this protocol should be suitable for most cell lysates.
- The concentrations of capture/detection antibodies used can be varied to create an immunoassay with a different sensitivity and dynamic range. A basic understanding of immunoassay development is required for the successful use of these reagents in immunoassays.
- A thorough and consistent wash technique is essential for proper assay performance. Wash Buffer should be dispensed forcefully and removed completely from the wells by aspiration or decanting. Remove any remaining Wash Buffer by inverting the plate and blotting it against clean paper towels.
- Use a fresh reagent reservoir and pipette tips for each step.
- It is recommended that all controls and samples be assayed in duplicate.
- Avoid microbial contamination of reagents and buffers. This may interfere with the sensitivity of the assay. Buffers containing protein should be made under aseptic conditions and stored at 2-8° C or be prepared fresh daily.

All trademarks and registered trademarks are the property of their respective owners.

GENERAL ELISA PROTOCOL

A plate layout is provided to record controls and samples assayed.

Plate Preparation

1. Dilute the Capture Antibody to a working concentration of 8.0 $\mu\text{g}/\text{mL}$ in PBS, without carrier protein. Immediately coat a 96 well microplate with 100 μL per well of the diluted Capture Antibody. Seal the plate and incubate overnight at room temperature.
2. Aspirate each well and wash with Wash Buffer, repeating the process four times for a total of five washes. Wash by filling each well with Wash Buffer (400 μL) using a squirt bottle, manifold dispenser, or autowasher. Complete removal of liquid at each step is essential for good performance. After the last wash, remove any remaining Wash Buffer by aspirating or by inverting the plate and blotting it against clean paper towels.
3. Block plates by adding 300 μL of Block Buffer to each well. Incubate at room temperature for 1-2 hours.
4. Repeat the aspiration/wash as in step 2. The plates are now ready for sample addition.

Assay Procedure

1. Add 100 μL of sample or control in IC Diluent #12 per well. Use IC Diluent #12 as the blank. Cover with a plate sealer and incubate 2 hours at room temperature.
Note: *A control concentration of 40 ng/mL is recommended.*
2. Repeat the aspiration/wash as in step 2 of Plate Preparation.
3. Immediately before use, dilute the Anti-Phospho-tyrosine-HRP to the working concentration specified on the vial label in IC Diluent #14 . Prepare only as much Anti-Phospho-tyrosine-HRP as required for each assay. Add 100 μL of the diluted Anti-Phospho-tyrosine-HRP to each well. Cover with a new plate sealer and incubate 2 hours at room temperature. Avoid placing the plate in direct light.
4. Repeat the aspiration/wash as in step 2 of Plate Preparation.
5. Add 100 μL of Substrate Solution to each well. Incubate for 20 minutes at room temperature. Avoid placing the plate in direct light.
6. Add 50 μL of Stop Solution to each well. Gently tap the plate to ensure thorough mixing.
7. Determine the optical density of each well immediately, using a microplate reader set to 450 nm. If wavelength correction is available, set to 540 nm or 570 nm. If wavelength correction is not available, subtract readings at 540 nm or 570 nm from the readings at 450 nm. This subtraction will correct for optical imperfections in the plate. Readings made directly at 450 nm without correction may be higher and less accurate.

CALCULATION OF RESULTS

Average the duplicate readings for each control and sample then subtract the average blank optical density.

SENSITIVITY

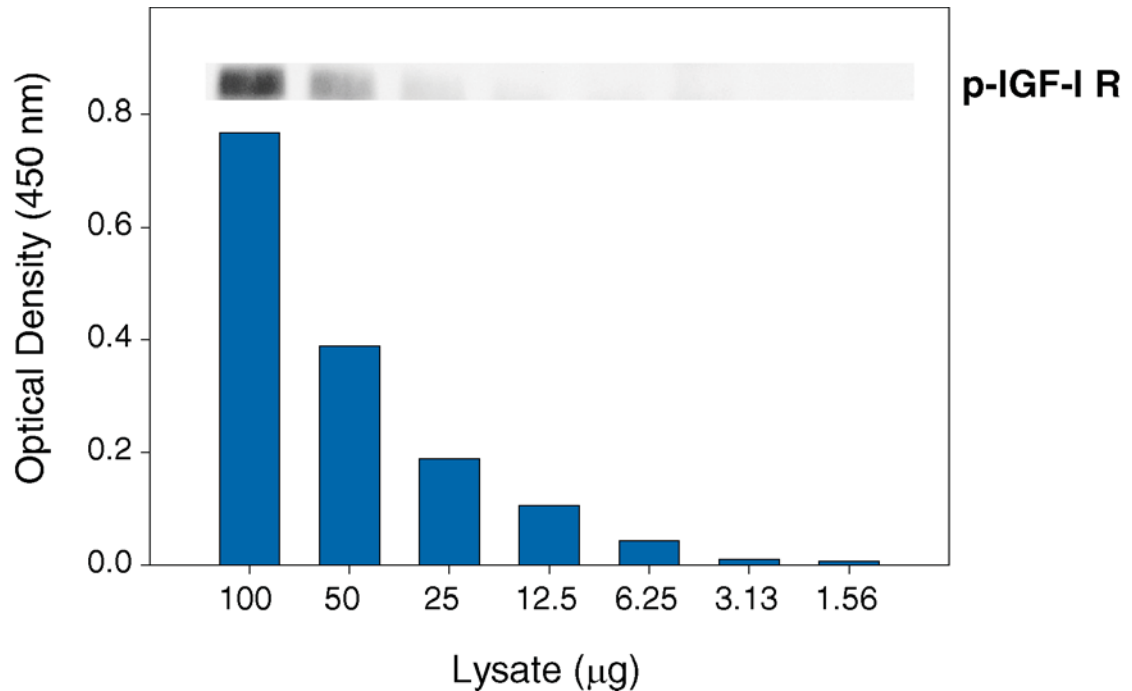


Figure 1: The Human Phospho-IGF-I R DuoSet IC ELISA is more sensitive than immunoprecipitation (IP)-Western analysis. HepG2 human hepatocellular carcinoma cells were treated with 100 ng/mL of recombinant IGF-I (R&D Systems, Catalog # 291-G1) for five minutes to induce tyrosine phosphorylation of IGF-I R. Serial dilutions of the lysates were analyzed using this DuoSet IC ELISA and by IP-Western blot (inset). IPs were performed using an anti-IGF-I R monoclonal antibody and anti-mouse IgG agarose. Immunoblots were incubated with a biotinylated anti-phospho-tyrosine monoclonal antibody (R&D Systems, Catalog # BAM1676) to detect phospho-IGF-I R (p-IGF-I R). Bands were visualized with Streptavidin-HRP (R&D Systems, Catalog # DY998) followed by chemiluminescent detection.

LIGAND-INDUCED PHOSPHORYLATION

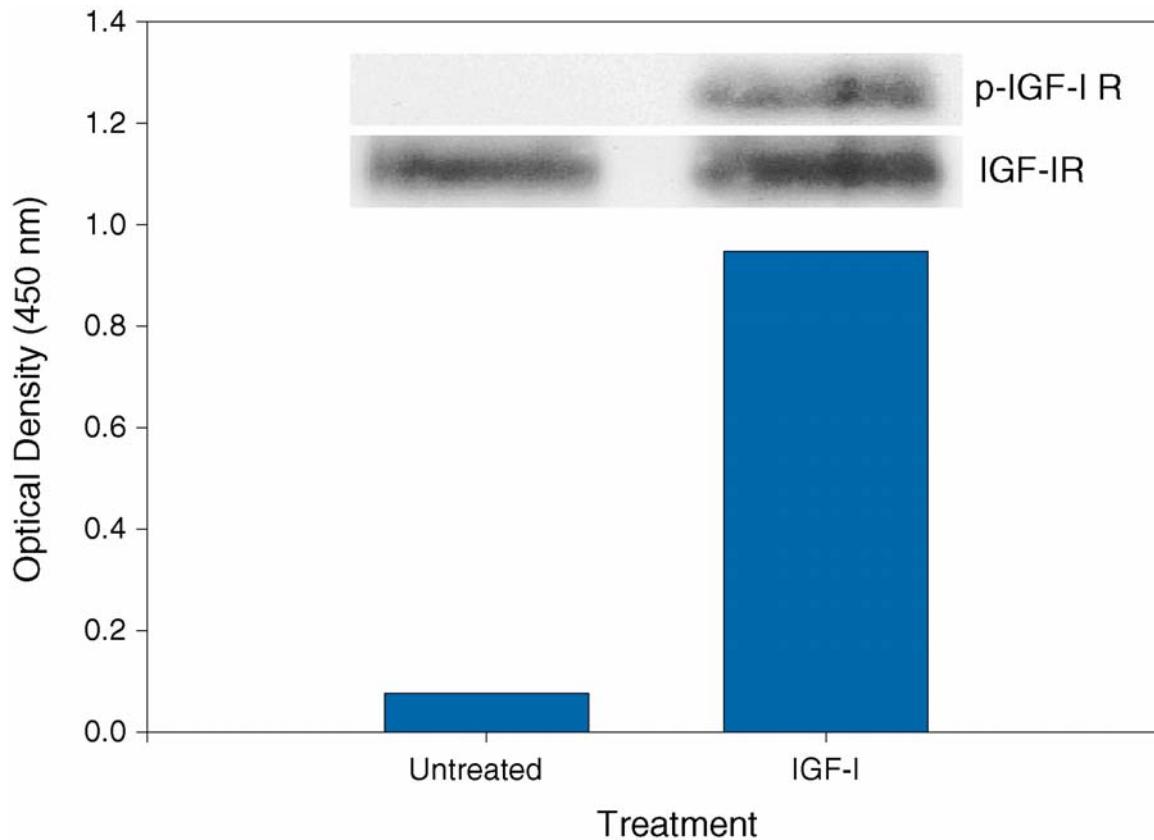


Figure 2: The Human Phospho-IGF-I R DuoSet IC ELISA detects ligand-induced IGF-I R tyrosine phosphorylation. HepG2 human hepatocellular carcinoma cells were untreated or treated with 100 ng/mL of recombinant human IGF-I for five minutes. ELISA and IP-Western blot (inset) analyses were performed using 100 μ g and 400 μ g of lysate, respectively. IP-Western blots for phospho-IGF-I R (p-IGF-I R) were performed as described in Figure 1. Blots were stripped and total IGF-I R (IGF-I R) was detected using a biotinylated anti-IGF-I R polyclonal antibody (R&D Systems, Catalog # BAF391).

SPECIFICITY

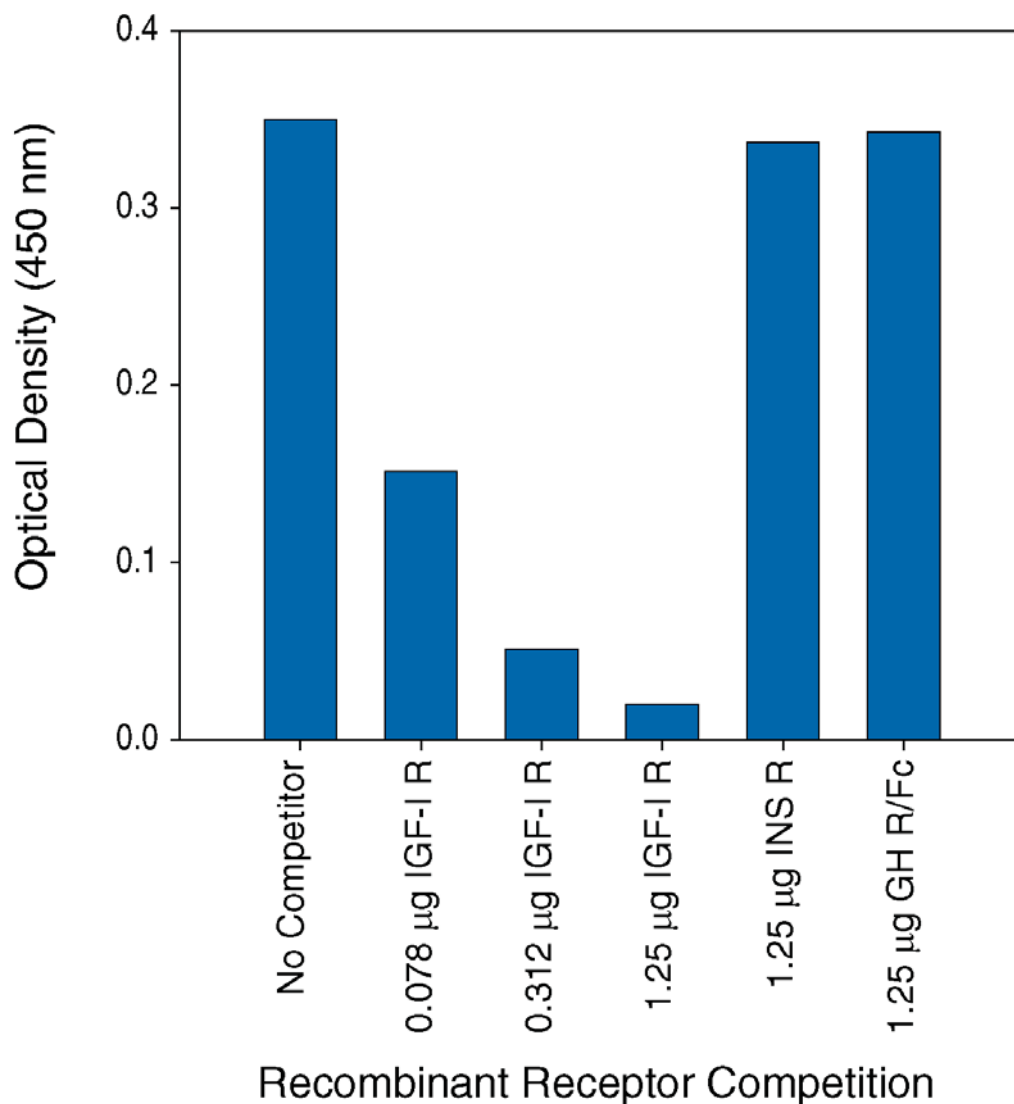


Figure 3: The specificity of the Human Phospho-IGF-I R DuoSet IC ELISA is confirmed by receptor competition. HepG2 human hepatocellular carcinoma cells were treated with 100 ng/mL recombinant IGF-I for five minutes. The indicated amounts of recombinant extracellular domains of human IGF-I R (R&D Systems, Catalog # 391-GR), Insulin Receptor (INS R; R&D Systems, Catalog # 1544-IR) or Growth Hormone Receptor/Fc Chimera (GH R; R&D Systems, Catalog # 1210-GR) were added to 60 µg lysate and analyzed using this DuoSet IC ELISA. Competition was observed only with recombinant human IGF-I R.

PLATE LAYOUT

Use this plate layout as a record of controls and samples assayed.

1													
2													
3													
4													
5													
6													
7													
8													
9													
10													
11													
12													
	A	B	C	D	E	F	G	H					

NOTES