

DuoSet[®] IC

Human/Mouse/Rat Total HSP70

Catalog Number DYC1663-2

DYC1663-5

For the development of sandwich ELISAs to measure Heat Shock Protein 70 (HSP70) in cell lysates.

This package insert must be read in its entirety before using this product.

FOR RESEARCH USE ONLY.

NOT FOR USE IN DIAGNOSTIC PROCEDURES.

TABLE OF CONTENTS

Contents	Page
PRINCIPLE OF THE ASSAY	2
MATERIALS PROVIDED.	2
OTHER MATERIALS REQUIRED	2
SOLUTIONS REQUIRED	3
REAGENT PREPARATION	3
PREPARATION OF SAMPLES.	4
PRECAUTION	4
TECHNICAL HINTS AND LIMITATIONS.	4
GENERAL ELISA PROTOCOL	5
CALCULATION OF RESULTS	6
TYPICAL DATA	6
CALIBRATION.	7
SPECIFICITY	7
QUANTIFICATION	8
PLATE LAYOUT	10

MANUFACTURED AND DISTRIBUTED BY:

R&D Systems, Inc.	TELEPHONE:	(800) 343-7475
614 McKinley Place NE		(612) 379-2956
Minneapolis, MN 55413	FAX:	(612) 656-4400
United States of America	E-MAIL:	info@RnDSystems.com

DISTRIBUTED BY:

R&D Systems Europe, Ltd.	TELEPHONE:	+44 (0)1235 529449
19 Barton Lane	FAX:	+44 (0)1235 533420
Abingdon Science Park	E-MAIL:	info@RnDSystems.co.uk
Abingdon, OX14 3NB		
United Kingdom		

R&D Systems China Co. Ltd.	TELEPHONE:	+86 (21) 52380373
24A1 Hua Min Empire Plaza	FAX:	+86 (21) 52371001
726 West Yan An Road	E-MAIL:	info@RnDSystemsChina.com.cn
Shanghai PRC 200050		

PRINCIPLE OF THE ASSAY

This DuoSet[®] IC ELISA contains the basic components required for the development of sandwich ELISAs to measure HSP70 in cell lysates. An immobilized capture antibody specifically binds HSP70. After washing away unbound material, a biotinylated detection antibody specific for HSP70 is used to detect the protein, utilizing a standard Streptavidin-HRP format.

MATERIALS PROVIDED

Store the unopened kit at 2 - 8° C. Do not use past kit expiration date.

Description	Part #	Storage Conditions	Vials Provided	
			Cat. # DYC1663-2	Cat. # DYC1663-5
Total HSP70 Capture Antibody	841680	2 - 8° C	1	2
Total HSP70 Detection Antibody	841681	2 - 8° C	1	2
Total HSP70 Standard	841682	2 - 8° C	3	5
Streptavidin-HRP	890803	2 - 8° C	1	1

DYC1663-2 contains sufficient materials to run ELISAs on at least two 96 well plates.*

DYC1663-5 contains sufficient materials to run ELISAs on at least five 96 well plates.*

*Provided the following conditions are met:

- The reagents are prepared as described in this package insert.
- The assay is run as described in the General ELISA Protocol on page 5.
- The recommended microplates, buffers, diluents, substrates, and solutions are used.

OTHER MATERIALS REQUIRED

- Aprotinin (Sigma # A6279)
- Leupeptin (Sigma # L8511)
- Pepstatin (Sigma # P4265)
- Phenylmethylsulfonylfluoride (PMSF) (Sigma # P7626)
- Sodium azide (NaN₃) (Sigma # S2002)
- Triton[®] X-100 (Sigma # T9284)
- Pipettes and pipette tips
- Deionized or distilled water
- 96 well microplates [Costar EIA Plates (Catalog # 2592 or R&D Systems' Catalog # DY990) are suggested]
- Plate sealers (R&D Systems, Catalog # DY992)
- Squirt bottle, manifold dispenser, or automated microplate washer

Triton is a registered trademark of Union Carbide.

SOLUTIONS REQUIRED

PBS - 137 mM NaCl, 2.7 mM KCl, 8.1 mM Na₂HPO₄, 1.5 mM KH₂PO₄, pH 7.2 - 7.4, 0.2 µm filtered.

Wash Buffer - 0.05% Tween[®] 20 in PBS, pH 7.2 - 7.4 (R&D Systems, Catalog # WA126).

Block Buffer - 1% BSA,* 0.05% NaN₃, in PBS, pH 7.2 - 7.4.

IC Diluent #1 - 1% BSA* in PBS, pH 7.2 - 7.4, 0.2 µm filtered.

IC Diluent #4** - 1 mM EDTA, 0.5% Triton X-100 in PBS, pH 7.2 - 7.4.

Note: *Approximately 50 mL of this diluent is required to run the assay on one plate.*

Lysis Buffer #12** - 1 mM EDTA, 0.5% Triton X-100, 10 µg/mL Leupeptin, 10 µg/mL Pepstatin, 100 µM PMSF, 3 µg/mL Aprotinin in PBS, pH 7.2 - 7.4.

Substrate Solution - 1:1 mixture of Color Reagent A (H₂O₂) and Color Reagent B (Tetramethylbenzidine) (R&D Systems, Catalog # DY999).

Stop Solution - 2 N H₂SO₄ (R&D Systems, Catalog # DY994).

REAGENT PREPARATION

Bring all reagents to room temperature before use.

Total HSP70 Capture Antibody (Part 841680) - Each vial contains 360 µg/mL of mouse anti-human HSP70 when reconstituted with 200 µL of PBS. After reconstitution, store at 2 - 8° C for up to 30 days or aliquot and store at ≤ -20° C in a manual defrost freezer or at ≤ -70° C for up to 3 months.***

Total HSP70 Detection Antibody (Part 841681) - Each vial contains 3.6 µg/mL of biotinylated rabbit anti-human HSP70 when reconstituted with 1.0 mL of IC Diluent #1. After reconstitution, store at 2 - 8° C for up to 30 days or aliquot and store at ≤ -20° C in a manual defrost freezer or at ≤ -70° C for up to 3 months.***

Total HSP70 Standard (Part 841682) - Each vial contains 150 ng/mL of recombinant human HSP70 when reconstituted with 500 µL of IC Diluent #4. **Use within one hour of reconstitution. A fresh standard should be used for each assay.** A seven point standard curve using 2-fold serial dilutions and a high standard of 10,000 pg/mL is recommended.

Streptavidin-HRP (Part 890803) - 1.0 mL of streptavidin conjugated to horseradish-peroxidase. Store at 2 - 8° C. **DO NOT FREEZE.**

*The use of R&D Systems Reagent Diluent Concentrate 2 (Catalog # DY995) or Millipore Bovine Serum Albumin, Fraction V, Protease free (Catalog # 82-045) is recommended. All buffers containing BSA must be stored at 2 - 8° C.

**Sample Diluent Concentrate 1 (5X) (R&D Systems, Catalog # DYC001), prepared as described in the DYC001 insert.

***Provided this is within the expiration date of the kit.

Tween is a registered trademark of ICI Americas.

PREPARATION OF SAMPLES

Cell Lysates - Rinse cells two times with PBS, making sure to remove any remaining PBS after the second rinse. Solubilize cells at 1×10^7 cells/mL in Lysis Buffer #12 and allow samples to sit on ice for 15 minutes. Assay immediately or store at $\leq -70^\circ \text{C}$. Before use, centrifuge samples at $2000 \times g$ for 5 minutes and transfer the supernate to a clean test tube. Sample protein concentration may be quantified using a total protein assay. If needed, further dilutions should be made in IC Diluent #4.

PRECAUTION

The Stop Solution suggested for use with this kit is an acidic solution. Wear eye, hand, face, and clothing protection when using this material.

TECHNICAL HINTS AND LIMITATIONS

- This DuoSet IC ELISA should not be used beyond the expiration date on the kit label.
- Individual results may vary due to differences in technique, plasticware and water sources.
- It is important that the diluents selected for reconstitution and for dilution of the standard reflect the environment of the samples being measured. The diluent suggested in this protocol should be suitable for most cell lysates.
- The type of enzyme and substrate and the concentrations of capture/detection antibodies used can be varied to create an immunoassay with a different sensitivity and dynamic range. A basic understanding of immunoassay development is required for the successful use of these reagents in immunoassays.
- A thorough and consistent wash technique is essential for proper assay performance. Wash Buffer should be dispensed forcefully and removed completely from the wells by aspiration or decanting. Remove any remaining Wash Buffer by inverting the plate and blotting it against clean paper towels.
- Use a fresh reagent reservoir and pipette tips for each step.
- It is recommended that all standards and samples be assayed in duplicate.
- Avoid microbial contamination of reagents and buffers. This may interfere with the sensitivity of the assay. Buffers containing protein should be made under aseptic conditions and stored at $2 - 8^\circ \text{C}$ or be prepared fresh daily.

GENERAL ELISA PROTOCOL

A plate layout is provided to record controls and samples assayed.

Plate Preparation

1. Dilute the Capture Antibody to a working concentration of 2.0 $\mu\text{g}/\text{mL}$ in PBS, without carrier protein. Immediately coat a 96 well microplate with 100 μL per well of the diluted Capture Antibody. Seal the plate and incubate overnight at room temperature.
2. Aspirate each well and wash with Wash Buffer, repeating the process two times for a total of 3 washes. Wash by filling each well with Wash Buffer (400 μL) using a squirt bottle, manifold dispenser, or autowasher. Complete removal of liquid at each step is essential for good performance. After the last wash, remove any remaining Wash Buffer by aspirating or by inverting the plate and blotting it against clean paper towels.
3. Block plates by adding 300 μL of Block Buffer to each well. Incubate at room temperature for 1 - 2 hours.
4. Repeat the aspiration/wash as in step 2. The plates are now ready for sample addition.

Assay Procedure

1. Add 100 μL of sample or standards in IC Diluent #4 per well. Use IC Diluent #4 as the zero standard. Cover with a plate sealer and incubate 2 hours at room temperature.
Note: *A seven point standard curve using 2-fold serial dilutions and a high standard of 10,000 pg/mL is recommended.*
2. Repeat the aspiration/wash as in step 2 of Plate Preparation.
3. Dilute the Detection Antibody to a working concentration of 100 ng/mL in IC Diluent #1 before use. Add 100 μL of the diluted Detection Antibody to each well. Cover with a new plate sealer and incubate 2 hours at room temperature.
4. Repeat the aspiration/wash as in step 2 of Plate Preparation.
5. Immediately before use, dilute the Streptavidin-HRP to the working concentration specified on the vial label using IC Diluent #1. Add 100 μL of the diluted Streptavidin-HRP to each well. Incubate for 20 minutes at room temperature. Avoid placing the plate in direct light.
6. Repeat the aspiration/wash as in step 2 of the Plate Preparation.
7. Add 100 μL of Substrate Solution to each well. Incubate for 20 minutes at room temperature. Avoid placing the plate in direct light.
8. Add 50 μL of Stop Solution to each well. Gently tap the plate to ensure thorough mixing.
9. Determine the optical density of each well immediately, using a microplate reader set to 450 nm. If wavelength correction is available, set to 540 nm or 570 nm. If wavelength correction is not available, subtract readings at 540 nm or 570 nm from the readings at 450 nm. This subtraction will correct for optical imperfections in the plate. Readings made directly at 450 nm without correction may be higher and less accurate.

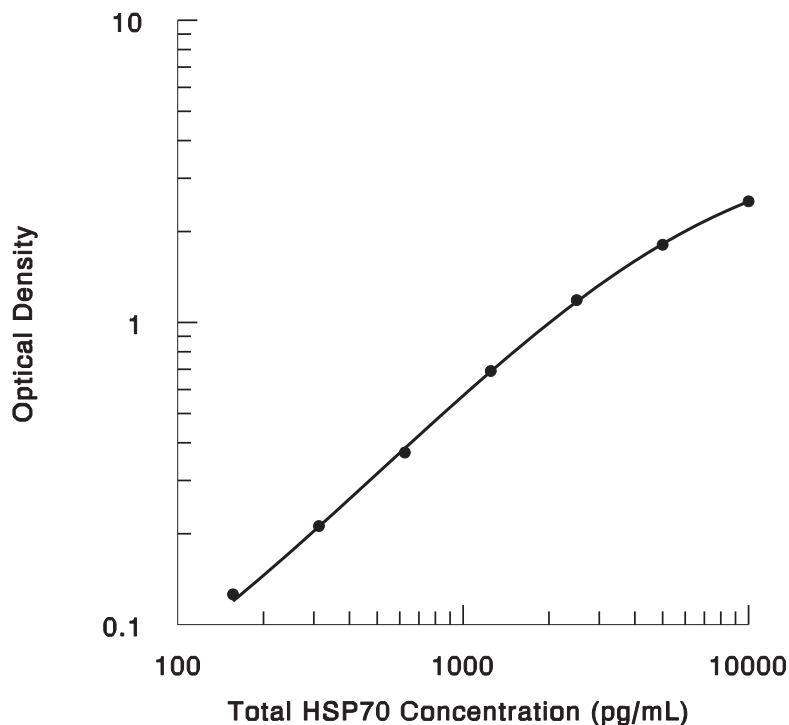
CALCULATION OF RESULTS

Average the duplicate readings for each standard and sample then subtract the average zero standard optical density. Results may be normalized to total protein or cell number.

Create a standard curve by reducing the data using computer software capable of generating a four parameter logistic (4-PL) curve-fit. As an alternative, construct a standard curve by plotting the mean absorbance for each standard on the y-axis against the concentration on the x-axis and draw a best fit curve through the points on the graph. The data may be linearized by plotting the log of the HSP70 concentrations versus the log of the O.D. and the best fit line can be determined by regression analysis. This procedure will produce an adequate but less precise fit of the data.

TYPICAL DATA

A standard curve should be generated for each set of samples assayed. The graph below represents typical data generated when using this Human/Mouse/Rat Total HSP70 DuoSet IC ELISA. The standard curve was calculated using a computer generated 4-PL curve-fit. This standard curve is for demonstration purposes only.



CALIBRATION

This DuoSet IC ELISA is calibrated against a highly purified *E. coli*-expressed recombinant human HSP70 produced at R&D Systems.

SPECIFICITY

The Human/Mouse/Rat Total HSP70 DuoSet IC ELISA specifically recognizes HSP70. Specificity was demonstrated by Western blot analysis of the protein bound by the capture antibody supplied in the kit.

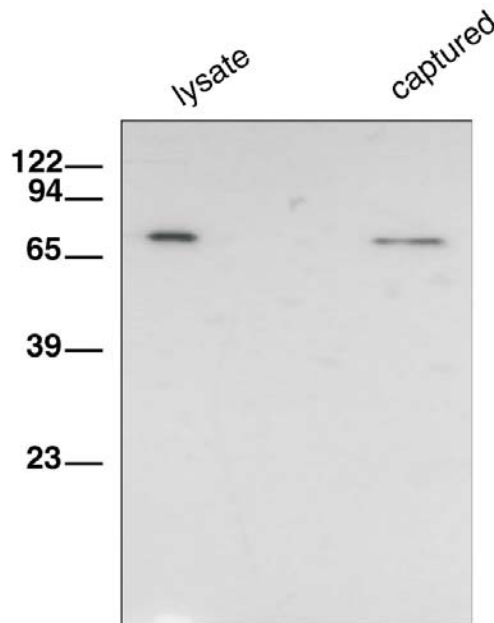


Figure 1: Lysates prepared from heat-shocked, human Jurkat cells were incubated in wells coated with Total HSP70 Capture Antibody. Unbound material was removed by washing and bound material was solubilized in SDS gel sample buffer. The same lysate and captured proteins were electrophoresed, transferred to an Immobilon-P membrane (Millipore) and immunoblotted with Total HSP70 Detection Antibody. Only a single band corresponding to HSP70 was detected.

To further determine specificity, recombinant human HSP27 was assayed at 100 ng/mL and measured 6294 pg/mL (6.3% cross-reactivity). Recombinant human (rh) HSP60, rhHSPA8, and rhGRP78/HSPA5 were assayed at 100 ng/mL and exhibited no cross-reactivity or interference in the assay.

QUANTIFICATION

Amounts of human HSP70, as measured by the Human/Mouse/Rat Total HSP70 DuoSet IC ELISA, are consistent with the amounts of HSP70 determined by qualitative Western blot analysis.

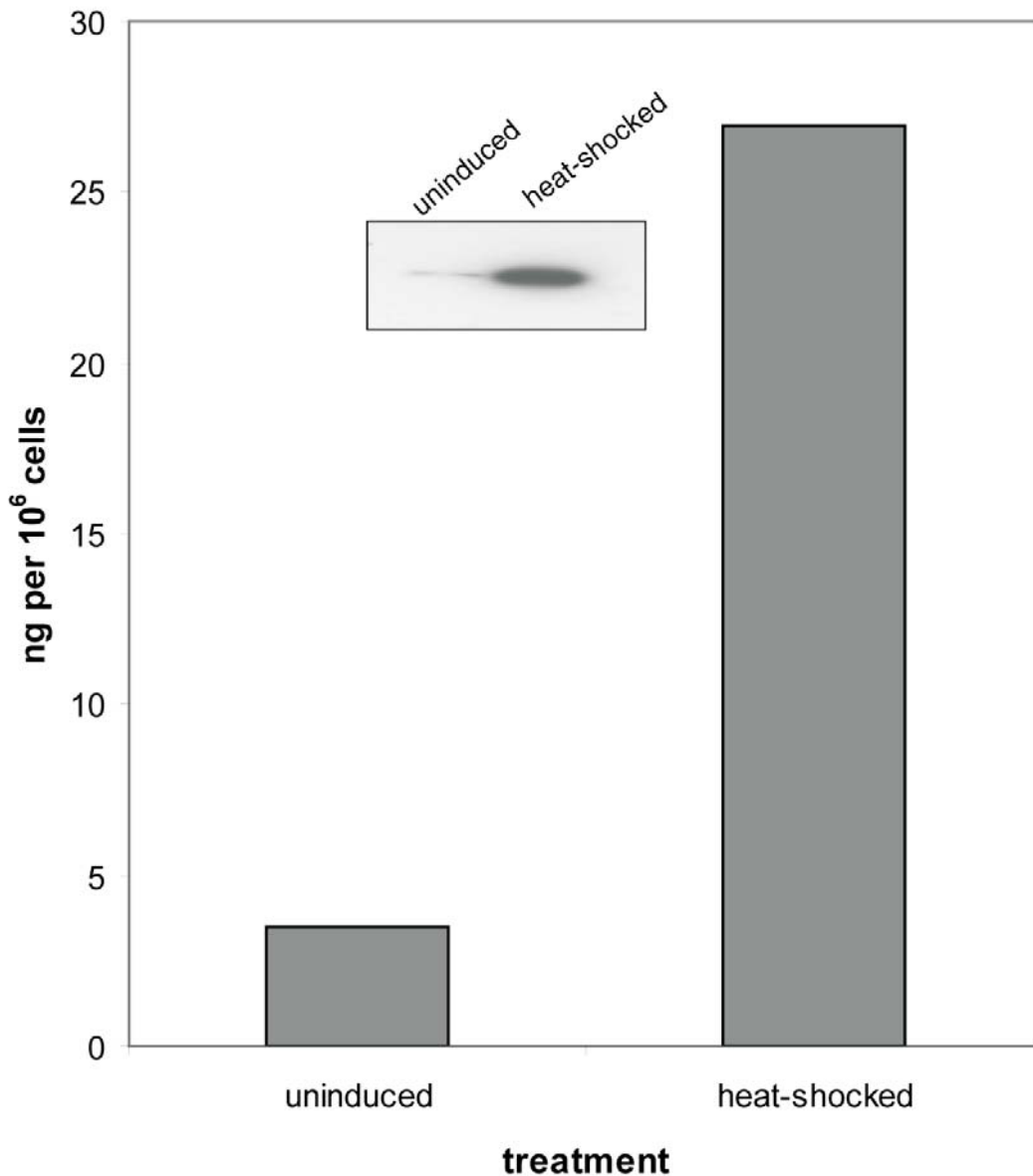


Figure 2: Jurkat cells were heat-shocked at 44° C for 30 minutes and allowed to recover for 4 hours at 37° C. Following cell lysis, HSP70 was quantified with this DuoSet IC ELISA. The same lysates were also immunoblotted (inset) with rabbit anti-HSP70 antibody (R&D Systems, Catalog # AF1663). The DuoSet IC ELISA results correlate well with the amounts of HSP70 detected by Western blot.

Quantification of HSP70 in heat-shocked mouse and rat cells

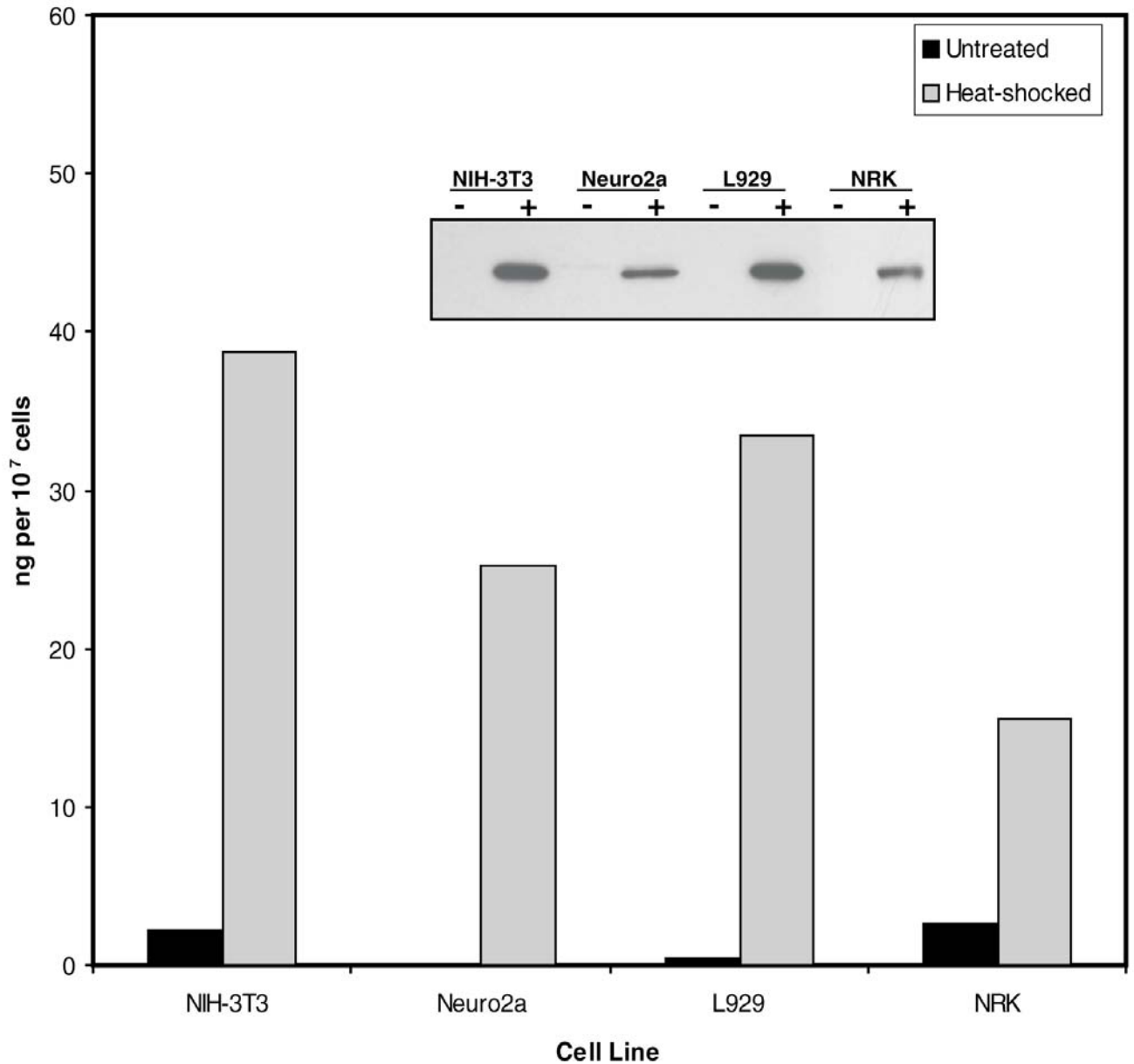


Figure 3: Mouse NIH-3T3, Neuro2a, L929 cells, and rat NRK cells were heat-shocked at 44° C for 30 minutes and allowed to recover for 4 hours at 37° C. Following cell lysis, HSP70 was quantified with this DuoSet IC ELISA. The same lysates were also immunoblotted (inset) with rabbit anti-human HSP70 antibody (R&D Systems, Catalog # AF1663). The DuoSet IC ELISA results correlate well with the amounts of HSP70 detected by Western blot.

PLATE LAYOUT

Use this plate layout as a record of standards and samples assayed.

1								
2								
3								
4								
5								
6								
7								
8								
9								
10								
11								
12								
	A	B	C	D	E	F	G	H

NOTES