

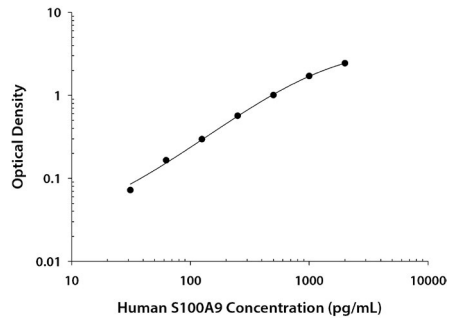
CALCULATION OF RESULTS

Average the duplicate readings for each standard, control, and sample and subtract the average zero standard optical density (O.D.).

Create a standard curve by reducing the data using computer software capable of generating a four parameter logistic (4-PL) curve-fit. As an alternative, construct a standard curve by plotting the mean absorbance for each standard on the y-axis against the concentration on the x-axis and draw a best fit curve through the points on the graph. The data may be linearized by plotting the log of the human S100A9 concentrations versus the log of the O.D. and the best fit line can be determined by regression analysis. This procedure will produce an adequate but less precise fit of the data. If samples have been diluted, the concentration read from the standard curve must be multiplied by the dilution factor.

TYPICAL DATA

This standard curve is only for demonstration purposes. A standard curve should be generated for each set of samples assayed.



SPECIFICITY

The following factors prepared at 50 ng/mL were assayed and exhibited no cross-reactivity or interference.

Recombinant human:	Recombinant mouse:
RAGE/Fc Chimera	S100A9
S100A4	
S100A8	
S100A13	
TLR4	
TLR4/MD-2 Complex	

A sample containing 25.0 ng/mL of recombinant human S100A8/S100A9 Complex reads as 101 pg/mL (0.4% cross-reactivity).

TECHNICAL HINTS & LIMITATIONS

- We recommend the use of R&D Systems' Reagent Diluent Concentrate 2 (Catalog # DY995) to prepare Reagent Diluent for use in this assay.
- The use of high quality Bovine Serum Albumin (BSA) for the Reagent Diluent is crucial for the optimum performance of the DuoSet ELISA Development kit. Impurities such as proteases, binding proteins, soluble receptors or other interfering substances can be found to varying degrees in virtually all BSA preparations and can inhibit or interfere with the detection of certain analytes. If the standard curve appears suppressed, consider evaluating a different preparation of BSA.
- It is suggested to start Reagent Diluent optimization for serum and plasma samples by using PBS supplemented with 10-50% animal serum. Do not use buffers with animal serum to reconstitute or dilute the Detection Antibody or Streptavidin-HRP.
- It is important that the Reagent Diluent selected for reconstitution and dilution of the standard reflects the environment of the samples being measured.
- Avoid microbial contamination of reagents and buffers.
- A thorough and consistent wash technique is essential for proper assay performance. Wash Buffer should be dispensed forcefully and removed completely from the wells by aspiration or decanting. Remove any remaining Wash Buffer by inverting the plate and blotting it against clean paper towels.
- Individual results may vary due to differences in technique, plasticware and water sources.
- It is recommended that all standards and samples be assayed in duplicate.
- The use of PBS from tablets may interfere in this assay.

TROUBLESHOOTING

Note: For more detailed troubleshooting, please visit: www.RnDSystems.com/ELISADevelopment

Poor Standard Curve

- Impure BSA used for Reagent Diluent preparation.
- Improper reconstitution and/or storage of standard.
- Improper dilution of highest standard and standard curve.
- Incomplete washing and/or aspiration of wells.
- Unequal volumes added to wells/pipetting error.
- Incorrect incubation times or temperatures.

Poor Precision

- Unequal volumes added to wells/pipetting error.
- Incomplete washing and/or aspiration of wells.
- Unequal mixing of reagents.

Low or No color Development

- Inadequate volume of substrate added to wells.
- Incorrect incubation times or temperatures.
- Impure BSA used for Reagent Diluent preparation.

Human S100A9

Catalog Number: DY5578 (15 plates)

INTENDED USE

For the development of sandwich ELISAs to measure natural and recombinant human S100 Calcium Binding Protein A9 (S100A9). The Reagent Diluent recommended may be suitable for most cell culture supernate, serum, and plasma samples. The Reagent Diluent selected for use can alter the performance of an immunoassay. Reagent Diluent optimization for samples with complex matrices such as serum and plasma, may improve their performance in this assay.

This kit contains sufficient materials to run ELISAs on at least fifteen 96 well plates, provided the following conditions are met:

- The reagents are prepared as described in this package insert.
- The assay is run as described in the General ELISA Protocol.
- The recommended microplates, buffers, diluents, substrates, and solutions are used.

This package insert must be read in its entirety before using this product. Refer to insert provided in this kit for component concentrations as they may vary. For research use only. Not for use in diagnostic procedures.

MANUFACTURED AND DISTRIBUTED BY:

USA & Canada | R&D Systems, Inc.

614 McKinley Place NE, Minneapolis, MN 55413, USA
TEL: (800) 343-7475 (612) 379-2956 FAX: (612) 656-4400
E-MAIL: info@RnDSystems.com

DISTRIBUTED BY:

UK & Europe | R&D Systems Europe, Ltd.

19 Barton Lane, Abingdon Science Park, Abingdon OX14 3NB, UK
TEL: +44 (0)1235 529449 FAX: +44 (0)1235 533420
E-MAIL: info@RnDSystems.co.uk

China | R&D Systems China Co., Ltd.

24A1 Hua Min Empire Plaza, 726 West Yan An Road, Shanghai PRC 200050
TEL: +86 (21) 52380373 FAX: +86 (21) 52371001
E-MAIL: info@RnDSystemsChina.com.cn

OTHER MATERIALS & SOLUTIONS REQUIRED

DuoSet Ancillary Reagent Kit 2 (5 plates):

(R&D Systems, Catalog # DY008) containing 96 well microplates, plate sealers, substrate solution, stop solution, plate coating buffer (PBS), wash buffer, and Reagent Diluent Concentrate 2.

The components listed above may be purchased separately:

96 well microplates: (R&D Systems, Catalog # DY990).

Plate Sealers: (R&D Systems, Catalog # DY992).

PBS: 137 mM NaCl, 2.7 mM KCl, 8.1 mM Na₂HPO₄, 1.5 mM KH₂PO₄, pH 7.2-7.4, 0.2 µm filtered (R&D Systems, Catalog # DY006).

Wash Buffer: 0.05% Tween® 20 in PBS, pH 7.2-7.4 (R&D Systems, Catalog # WA126).

Reagent Diluent: 1% BSA in PBS, pH 7.2-7.4, 0.2 µm filtered (R&D Systems, Catalog # DY995).

Quality of BSA is critical (see Technical Hints).

Substrate Solution: 1:1 mixture of Color Reagent A (H₂O₂) and Color Reagent B (Tetramethylbenzidine) (R&D Systems, Catalog # DY999).

Stop Solution: 2 N H₂SO₄ (R&D Systems, Catalog # DY994).

PRECAUTIONS

Some components in this kit contain ProClin® which may cause an allergic skin reaction. Avoid breathing mist.

The Stop Solution suggested for use with this kit is an acid solution.

The Color Reagent B suggested for use with this kit may cause skin, eye, and respiratory irritation. Avoid breathing fumes.

Wear protective gloves, clothing, eye, and face protection. Wash hands thoroughly after handling. Please refer to the MSDS on our website prior to use.

CALIBRATION

This DuoSet is calibrated against a highly purified *E. coli*-expressed recombinant human S100A9 produced at R&D Systems.

MATERIALS PROVIDED & STORAGE CONDITIONS

Store the unopened kit at 2-8 °C. Do not use past kit expiration date.

DESCRIPTION	PART #	# VIALS	STORAGE OF OPENED/ RECONSTITUTED MATERIAL
Human S100A9 Capture Antibody	843228	1 vial	Store at 2-8 °C for up to 8 weeks or aliquot and store at -20 °C to -70 °C in a manual defrost freezer for up to 24 weeks.*
Human S100A9 Detection Antibody	843229	1 vial	
Human S100A9 Standard	843230	3 vials	Aliquot and store at -70 °C for up to 8 weeks.*
Streptavidin-HRP	890803	1 vial	Store at 2-8 °C for up to 24 weeks.* DO NOT FREEZE.

* Provided this is within the expiration date of the kit.

REAGENT PREPARATION

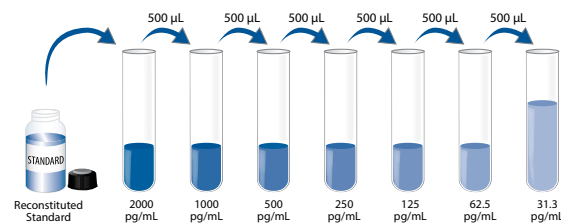
Bring all reagents to room temperature before use. Allow all components to sit for a minimum of 15 minutes with gentle agitation after initial reconstitution. Working dilutions should be prepared and used immediately.

Streptavidin-HRP: 1.0 mL of streptavidin conjugated to horseradish-peroxidase. Dilute to the working concentration specified on the vial label using Reagent Diluent.

Human S100A9 Capture Antibody: 360 µg/mL of mouse anti-human S100A9 antibody when reconstituted with 1.0 mL of PBS. Dilute to a working concentration of 2.0 µg/mL in PBS, without carrier protein.

Human S100A9 Detection Antibody: 180 µg/mL of biotinylated mouse anti-human S100A9 antibody when reconstituted with 1.0 mL of Reagent Diluent. Dilute to a working concentration of 1.0 µg/mL in Reagent Diluent.

Human S100A9 Standard: Each vial contains 45 ng/mL of recombinant human S100A9 when reconstituted with 0.5 mL of Reagent Diluent. A seven point standard curve using 2-fold serial dilutions in Reagent Diluent, and a high standard of 2000 pg/mL is recommended. Prepare 1000 µL of high standard per plate assayed.



GENERAL ELISA PROTOCOL

Plate Preparation

1. Dilute the Capture Antibody to the working concentration in PBS without carrier protein. Immediately coat a 96-well microplate with 100 µL per well of the diluted Capture Antibody. Seal the plate and incubate overnight at room temperature.
2. Aspirate each well and wash with Wash Buffer, repeating the process two times for a total of three washes. Wash by filling each well with Wash Buffer (400 µL) using a squirt bottle, manifold dispenser, or autowasher. Complete removal of liquid at each step is essential for good performance. After the last wash, remove any remaining Wash Buffer by aspirating or by inverting the plate and blotting it against clean paper towels.
3. Block plates by adding 300 µL of Reagent Diluent to each well. Incubate at room temperature for a minimum of 1 hour.
4. Repeat the aspiration/wash as in step 2. The plates are now ready for sample addition.

Assay Procedure

1. Add 100 µL of sample or standards in Reagent Diluent, or an appropriate diluent, per well. Cover with an adhesive strip and incubate 2 hours at room temperature.
2. Repeat the aspiration/wash as in step 2 of Plate Preparation.
3. Add 100 µL of the Detection Antibody, diluted in Reagent Diluent, to each well. Cover with a new adhesive strip and incubate 2 hours at room temperature.
4. Repeat the aspiration/wash as in step 2 of Plate Preparation.
5. Add 100 µL of the working dilution of Streptavidin-HRP to each well. Cover the plate and incubate for 20 minutes at room temperature. Avoid placing the plate in direct light.
6. Repeat the aspiration/wash as in step 2.
7. Add 100 µL of Substrate Solution to each well. Incubate for 20 minutes at room temperature. Avoid placing the plate in direct light.
8. Add 50 µL of Stop Solution to each well. Gently tap the plate to ensure thorough mixing.
9. Determine the optical density of each well immediately, using a microplate reader set to 450 nm. If wavelength correction is available, set to 540 nm or 570 nm. If wavelength correction is not available, subtract readings at 540 nm or 570 nm from the readings at 450 nm. This subtraction will correct for optical imperfections in the plate. Readings made directly at 450 nm without correction may be higher and less accurate.