

DESCRIPTION

| | |
|---------------------------|--|
| Species Reactivity | Human |
| Specificity | Detects human E-Selectin/P-Selectin (CD62E/P). Binds to COS cells transfected with human E-Selectin or human P-Selectin. It does not bind to CHO cells transfected with human ICAM-1, L-Selectin, PECAM-1 or VCAM-1. |
| Source | Monoclonal Mouse IgG ₁ Clone # BBIG-E6 (13D5) |
| Purification | Protein A or G purified from hybridoma culture supernatant |
| Immunogen | Activated HUVEC human umbilical vein endothelial cells |
| Formulation | Lyophilized from a 0.2 µm filtered solution in PBS with Trehalose. See Certificate of Analysis for details. |

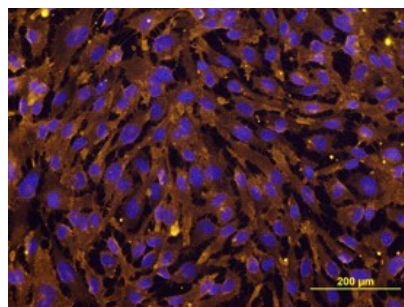
APPLICATIONS

Please Note: Optimal dilutions should be determined by each laboratory for each application. *General Protocols* are available in the *Technical Information* section on our website.

| | Recommended Concentration | Sample |
|----------------------------|---|--|
| Flow Cytometry | 2.5 µg/10 ⁶ cells | HUVEC human umbilical vein endothelial cells treated with Recombinant Human TNF-α (Catalog # 210-TA) |
| Immunocytochemistry | 8-25 µg/mL | See Below |
| Adhesion Blockade | The adhesion of U937 human histiocytic lymphoma cells (5 x 10 ⁴ cells/well) to immobilized Recombinant Human P-Selectin/CD62P (Catalog # ADP3, 10 µg/mL, 100 µL/well) was maximally inhibited (80-100%) by 10 µg/mL of the antibody. | |
| Immunoprecipitation | Pigott, R. <i>et al.</i> (1991) J. Immunol. 147 :130. | |

DATA

Immunocytochemistry



E-Selectin (CD62E)/P-Selectin (CD62P) in HUVEC Human Cells.

E-Selectin (CD62E)/P-Selectin (CD62P) was detected in immersion fixed HUVEC human umbilical vein endothelial cells stimulated with TNF-alpha (Catalog # 210-TA-010) using Mouse Anti-Human E-Selectin (CD62E)/P-Selectin (CD62P) Monoclonal Antibody (Catalog # BBA1) at 10 µg/mL for 3 hours at room temperature. Cells were stained using the Northern-Lights™ 557-conjugated Anti-Mouse IgG Secondary Antibody (yellow; Catalog # NL007) and counterstained with DAPI (blue). View our protocol for [Fluorescent ICC Staining of Cells on Coverslips](#).

PREPARATION AND STORAGE

| | |
|--------------------------------|---|
| Reconstitution | Sterile PBS to a final concentration of 0.5 mg/mL. |
| Shipping | The product is shipped at ambient temperature. Upon receipt, store it immediately at the temperature recommended below. |
| Stability & Storage | <p>Use a manual defrost freezer and avoid repeated freeze-thaw cycles.</p> <ul style="list-style-type: none"> • 12 months from date of receipt, -20 to -70 °C as supplied. • 1 month, 2 to 8 °C under sterile conditions after reconstitution. • 6 months, -20 to -70 °C under sterile conditions after reconstitution. |

BACKGROUND

E-Selectin and P-Selectin are related (44% amino acid sequence identity) adhesion molecules containing multiple short complement-like repeats and an N-terminal C-type lectin domain in their extracellular regions. E-Selectin is expressed on activated vascular endothelial cells and P-Selectin occurs on activated platelets and endothelial cells.