

## DESCRIPTION

<b>Species Reactivity</b>	Mouse
<b>Specificity</b>	Detects SOST/Sclerostin in Western blots. In Western blots, approximately 20% cross-reactivity with recombinant human SOST is observed.
<b>Source</b>	Polyclonal Goat IgG
<b>Purification</b>	Antigen Affinity-purified
<b>Immunogen</b>	Mouse myeloma cell line NS0-derived recombinant mouse SOST/Sclerostin Gln24-Tyr211 Accession # NP_077769
<b>Formulation</b>	Lyophilized from a 0.2 µm filtered solution in PBS with BSA as a carrier protein. See Certificate of Analysis for details.

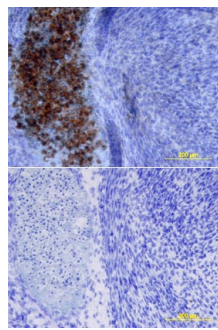
## APPLICATIONS

**Please Note:** Optimal dilutions should be determined by each laboratory for each application. [General Protocols](#) are available in the [Technical Information](#) section on our website.

	Recommended Concentration	Sample
<b>Western Blot</b>	0.1 µg/mL	Recombinant Mouse SOST/Sclerostin (Catalog # 1589-ST)
<b>Immunohistochemistry</b>	5-15 µg/mL	See Below

## DATA

### Immunohistochemistry



**SOST/Sclerostin in Mouse Embryo.** SOST/Sclerostin was detected in immersion fixed frozen sections of mouse embryo using Goat Anti-Mouse SOST/Sclerostin Biotinylated Antigen Affinity-purified Polyclonal Antibody (Catalog # BAF1589) at 15 µg/mL overnight at 4 °C. Tissue was stained using the Anti-Goat HRP-DAB Cell & Tissue Staining Kit (brown; Catalog # CTS008) and counterstained with hematoxylin (blue). Lower panel shows a lack of labeling if primary antibodies are omitted and tissue is stained only with secondary antibody followed by incubation with detection reagents. View our protocol for [Chromogenic IHC Staining of Frozen Tissue Sections](#).

## PREPARATION AND STORAGE

<b>Reconstitution</b>	Reconstitute at 0.2 mg/mL in sterile PBS.
<b>Shipping</b>	The product is shipped at ambient temperature. Upon receipt, store it immediately at the temperature recommended below.
<b>Stability &amp; Storage</b>	<p><b>Use a manual defrost freezer and avoid repeated freeze-thaw cycles.</b></p> <ul style="list-style-type: none"> <li>• 12 months from date of receipt, -20 to -70 °C as supplied.</li> <li>• 1 month, 2 to 8 °C under sterile conditions after reconstitution.</li> <li>• 6 months, -20 to -70 °C under sterile conditions after reconstitution.</li> </ul>

## BACKGROUND

SOST, also known as Sclerostin, is a member of the cerberus/DAN family, a group of secreted glycoproteins characterized by a cysteine-knot motif. Cerberus/DAN family members are putative BMP antagonists, and include Dan, Cerberus, Gremlin, PRDC, and Caronte. While the overall sequence identity between members of the family is low, they have conserved spacing of six cysteine residues. Cerberus and Dan have an additional cysteine residue used for dimerization; however, SOST does not and is secreted as a monomer. SOST was originally identified as an important regulator of bone homeostasis. Positional cloning studies identified that mutations in the SOST gene can cause sclerosteosis and van Buchem disease, bone dysplasia disorders characterized by progressive skeletal overgrowth. Significant levels of SOST expression are detected in bone, cartilage, kidney, and liver. SOST is expressed by osteoclasts in developing bones of mouse embryos, including both intramembranously forming skull bones and endochondrally forming long bones. SOST plays a physiological role as a negative regulator of bone formation by repressing BMP-induced osteogenesis. SOST has been shown to have unique ligand specificity, binding BMP-5, -6, and -7 with high affinity and BMP-2 and -4 with low affinity. This seems to be the first example of a BMP antagonist being localized to osteoclasts, cells derived from the hematopoietic lineage, that function to degrade bone matrix. Recombinant human SOST preparations from R&D Systems bind BMP-5 and BMP-6 in a functional ELISA. Human and mouse SOST share 88% amino acid identity (1-3).

### References:

1. Kusu, N. *et al.* (2003) *J. Biol. Chem.* **278**:24113.
2. Balemans, W. *et al.* (2001) *Hum. Mol. Genet.* **10**:537.
3. Brunkow, M.E. *et al.* (2001) *Am. J. Hum. Genet.* **68**:577.