

## DESCRIPTION

<b>Species Reactivity</b>	Human
<b>Specificity</b>	Detects human PSAP in direct ELISAs and Western blots.
<b>Source</b>	Polyclonal Rabbit IgG
<b>Purification</b>	Antigen Affinity-purified
<b>Immunogen</b>	<i>S. frugiperda</i> insect ovarian cell line Sf21-derived recombinant human PSAP Gly17-Asn524 Accession # P07602
<b>Formulation</b>	Supplied as a solution in PBS containing BSA, Glycerol and Sodium Azide. See Certificate of Analysis for details. See Certificate of Analysis for details.

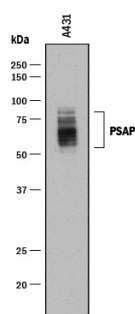
## APPLICATIONS

**Please Note:** Optimal dilutions should be determined by each laboratory for each application. [General Protocols](#) are available in the Technical Information section on our website.

	<b>Recommended Concentration</b>	<b>Sample</b>
<b>Western Blot</b>	1:1000 dilution	See Below
<b>Immunocytochemistry</b>	1:100 dilution	See Below

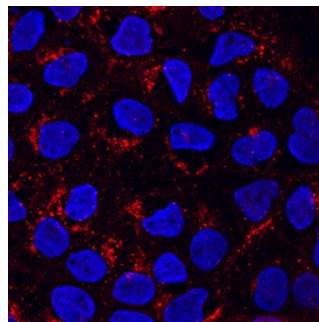
## DATA

### Western Blot



**Detection of Human PSAP by Western Blot.** Western blot shows lysates of A431 human epithelial carcinoma cell line. PVDF membrane was probed with 1:1000 dilution of Rabbit Anti-Human PSAP Antigen Affinity-purified Polyclonal Antibody (Catalog # AF8520) followed by HRP-conjugated Anti-Rabbit IgG Secondary Antibody (Catalog # HAF008). Specific bands were detected for PSAP at approximately 60-80 kDa (as indicated). This experiment was conducted under reducing conditions and using Immunoblot Buffer Group 1.

### Immunocytochemistry



**PSAP in A431 Human Cell Line.** PSAP was detected in immersion fixed A431 human epithelial carcinoma cell line using Rabbit Anti-Human PSAP Antigen Affinity-purified Polyclonal Antibody (Catalog # AF8520) at 1:100 dilution for 3 hours at room temperature. Cells were stained using the NorthernLights™ 557-conjugated Anti-Rabbit IgG Secondary Antibody (red; Catalog # NL004) and counterstained with DAPI (blue). Specific staining was localized to Golgi. View our protocol for [Fluorescent ICC Staining of Cells on Coverslips](#).

## PREPARATION AND STORAGE

**Shipping** The product is shipped with polar packs. Upon receipt, store it immediately at the temperature recommended below.

**Stability & Storage**

- 12 months from date of receipt, -20 °C as supplied.
- 1 month, 2 to 8 °C under sterile conditions after opening.
- 6 months, -20 °C under sterile conditions after opening.

## BACKGROUND

Prosaposin behaves as a myelinotrophic and neurotrophic factor, whose effects are mediated by its G-protein-coupled receptors, GPR37 and GPR37L1, undergoing ligand-mediated internalization followed by ERK phosphorylation signaling. By similarity Saposins are specific low-molecular mass non-enzymic proteins and participate in the lysosomal degradation of sphingolipids, which takes place by the sequential action of specific hydrolases. The Prosaposin gets cleaved into 5 chains, Saposin A, B, B-Val, C and D. It also contains several disulfide bonds as well as glycosylation sites.

## PRODUCT SPECIFIC NOTICES

\* Contains <0.1% Sodium Azide, which is not hazardous at this concentration according to GHS classifications. Refer to SDS for additional information and handling instructions.