

DESCRIPTION

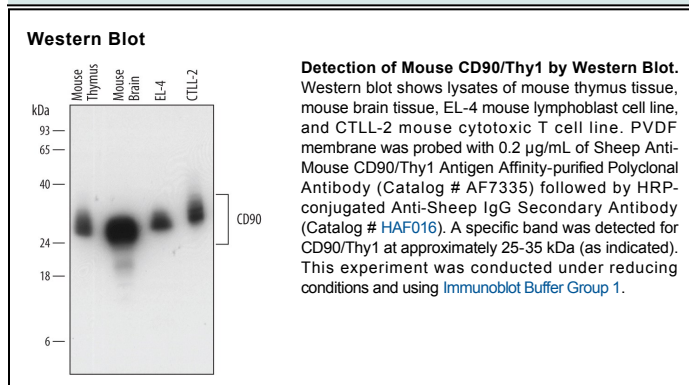
Species Reactivity	Mouse
Specificity	Detects mouse CD90/Thy1 in direct ELISAs and Western blots. In direct ELISAs, less than 2% cross-reactivity with recombinant human CD90/Thy1 is observed.
Source	Polyclonal Sheep IgG
Purification	Antigen Affinity-purified
Immunogen	Chinese hamster ovary cell line CHO-derived recombinant mouse CD90/Thy1 Gln20-Lys130 Accession # P01831
Formulation	Lyophilized from a 0.2 µm filtered solution in PBS with Trehalose. See Certificate of Analysis for details. *Small pack size (-SP) is supplied as a 0.2 µm filtered solution in PBS.

APPLICATIONS

Please Note: Optimal dilutions should be determined by each laboratory for each application. [General Protocols](#) are available in the [Technical Information](#) section on our website.

	Recommended Concentration	Sample
Western Blot	0.2 µg/mL	See Below

DATA



PREPARATION AND STORAGE

Reconstitution	Sterile PBS to a final concentration of 0.2 mg/mL.
Shipping	The product is shipped at ambient temperature. Upon receipt, store it immediately at the temperature recommended below. *Small pack size (-SP) is shipped with polar packs. Upon receipt, store it immediately at -20 to -70 °C
Stability & Storage	Use a manual defrost freezer and avoid repeated freeze-thaw cycles. <ul style="list-style-type: none"> ● 12 months from date of receipt, -20 to -70 °C as supplied. ● 1 month, 2 to 8 °C under sterile conditions after reconstitution. ● 6 months, -20 to -70 °C under sterile conditions after reconstitution.

BACKGROUND

CD90, also known as Thy1 (THYmocyte differentiation antigen 1) is a GPI-linked glycoprotein expressed by endothelial cells, hematopoietic stem cells, and in developing nervous tissue. Unlike human CD90, mouse CD90 is also highly expressed on T cells and is involved in T cell activation. CD90 may play a role in cell-cell or cell-ligand interactions during synaptogenesis and other events in the brain.