

DESCRIPTION

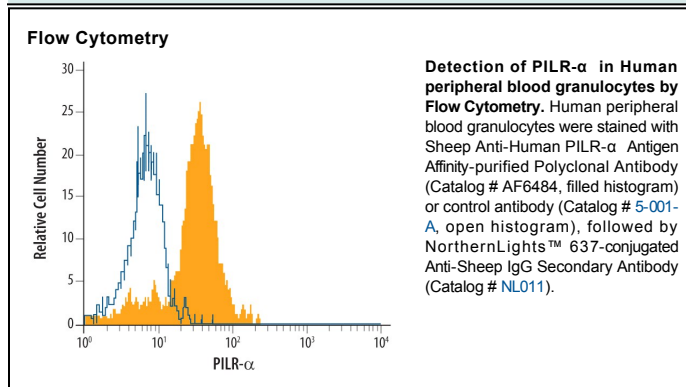
Species Reactivity	Human
Specificity	Detects human PILR- α in direct ELISAs.
Source	Polyclonal Sheep IgG
Purification	Antigen Affinity-purified
Immunogen	Mouse myeloma cell line NS0-derived recombinant human PILR- α Gln20-Thr196 Accession # Q9UKJ1
Formulation	Lyophilized from a 0.2 μ m filtered solution in PBS with Trehalose. See Certificate of Analysis for details. *Small pack size (-SP) is supplied as a 0.2 μ m filtered solution in PBS.

APPLICATIONS

Please Note: Optimal dilutions should be determined by each laboratory for each application. *General Protocols* are available in the *Technical Information* section on our website.

	Recommended Concentration	Sample
Flow Cytometry	2.5 μ g/10 ⁶ cells	See Below

DATA



PREPARATION AND STORAGE

Reconstitution	Sterile PBS to a final concentration of 0.2 mg/mL.
Shipping	The product is shipped at ambient temperature. Upon receipt, store it immediately at the temperature recommended below. *Small pack size (-SP) is shipped with polar packs. Upon receipt, store it immediately at -20 to -70 °C
Stability & Storage	Use a manual defrost freezer and avoid repeated freeze-thaw cycles. <ul style="list-style-type: none"> ● 12 months from date of receipt, -20 to -70 °C as supplied. ● 1 month, 2 to 8 °C under sterile conditions after reconstitution. ● 6 months, -20 to -70 °C under sterile conditions after reconstitution.

BACKGROUND

PILR- α (paired immunoglobulin-like, type 2 receptor alpha) is a 44-50 kDa type I transmembrane (TM) paired receptor glycoprotein that belongs to the Ig Superfamily. It is expressed by monocytes, macrophages, CD14⁺CD11a⁺ DC and retinal pigment cells, and is known to bind to CD99 and PANP. PILR- α acts as a receptor for HSV and serves as a negative immunomodulator that contains an ITIM. Mature human PILR- α is 284 amino acids (aa) in length. It contains one V-type Ig-like domain in its extracellular region (aa 32-150), and two ITIMs in its cytoplasmic domain (aa 267-272 and 296-301). There are multiple potential splice variants. One is TM and possesses a 35 aa substitution for aa 264-303, while others are soluble, and show a deletion of aa 152-224 that may be coupled to the 35 aa substitution noted above, or simply exhibit a 24 aa substitution for aa 152-303. Over aa 20-196, human PILR- α shares only 42% aa identity with mouse PILR- α , and 89% aa identity with human PILR- β .